

The following Notice to Mariners is published for general information

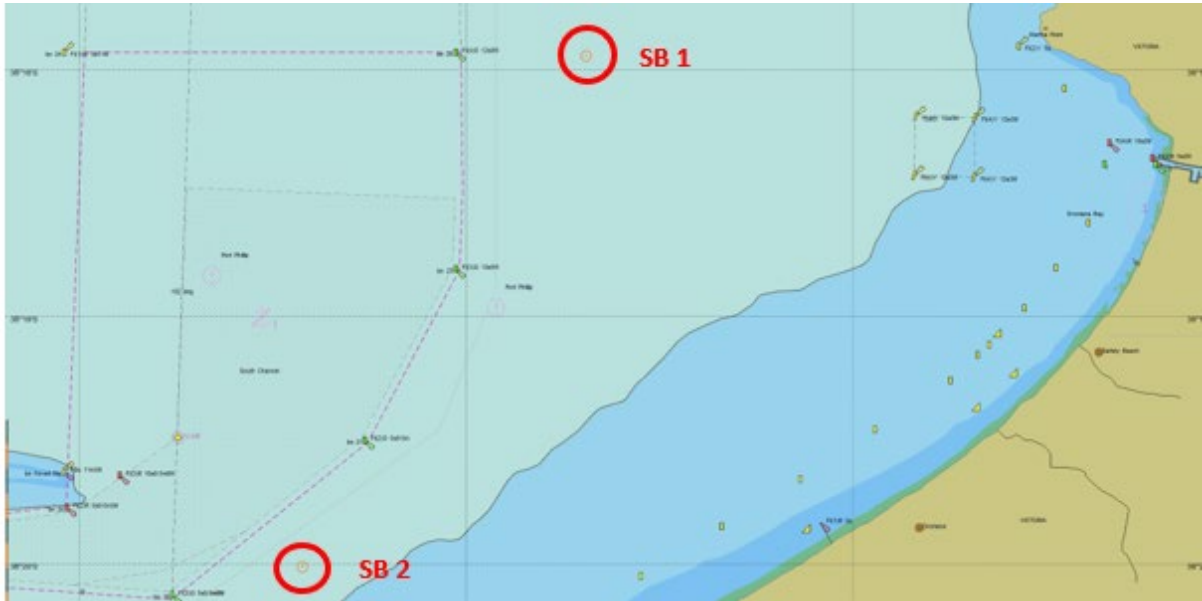
Australia – Victoria**No. 524 - 2024****PORT OF MELBOURNE****PORT PHILLIP BAY****SPECIAL MARK BUOYS - SB1 AND SB2 ESTABLISHED****Date:** 28 November 2024**Refers:** N/A**Details:** Mariners are advised that **Safety Beach Sailing Club** have established two special mark buoys in the following positions:

Identification marking	Latitude	Longitude	Light characteristic
SB 1	38° 17.930'S	144° 56.604'E	Fl (2) Y 15s
SB 2	38° 20.010'S	144° 55.150'E	Fl (2) Y 15s

For further information, please email the Navigation Services department at NavigationServices@ports.vic.gov.au.

Charts & Publications affected: AUS 143
ENC AU5RIP01**Further notice:** No further notice will be issued.

David Tilsley
Deputy Harbour Master
Navigation Services



NOT FOR NAVIGATIONAL USE



SB1 & SB2 Buoys