

The following Notice to Mariners is published for general information

Australia – Victoria

No. 478 (T) - 2024

PORT OF MELBOURNE APPLETON DOCK B BERTH CHAINAGE RESTRICTION DUE TO WORKS

Date: 8 November 2024

Refers: NtM 299 (T) – 24

Details: Mariners are advised that **Appleton Dock B berth** will not be available for commercial vessels (SOLAS) between chainage **0m to 150m** from **11 November 2024 until further notice**.

The western most bollard available for use during works is located at chainage **135m** (reference bollard availability diagram).

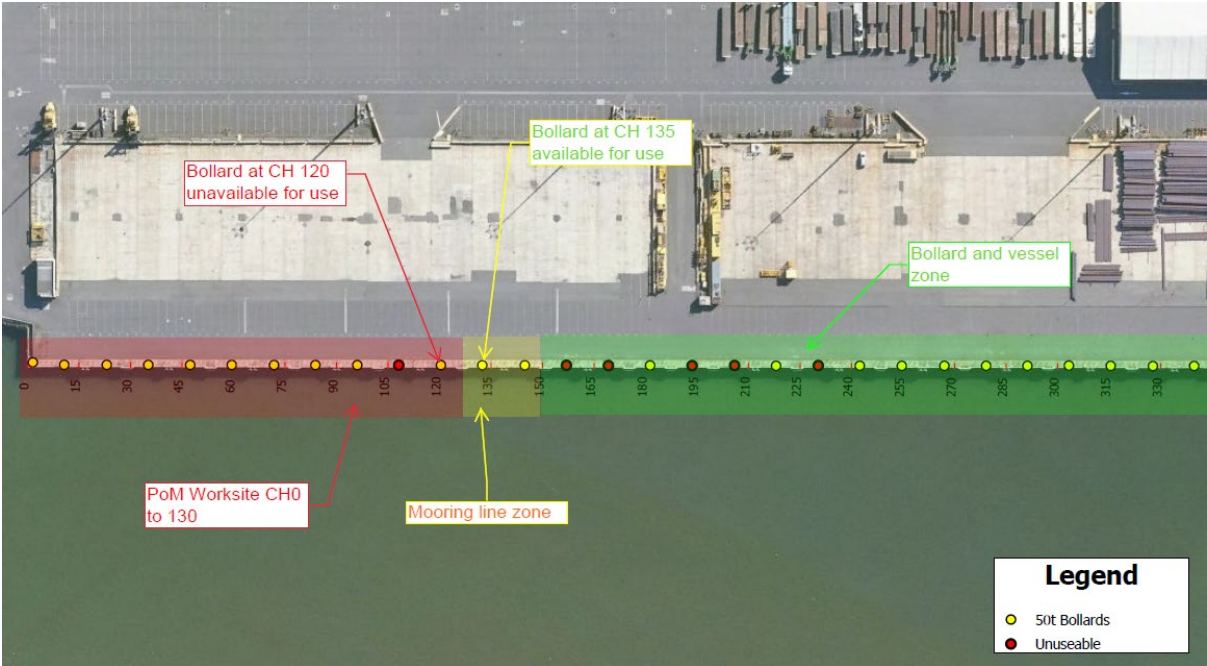
For further information, please email the Navigation Services department at NavigationServices@ports.vic.gov.au or contact Melbourne VTS on 9644 9700 / VHF Channel 12.

Charts & Publications affected: ENC AU5MEL01

Further notice: Further notice will be issued.



David Tilsley
Deputy Harbour Master
Navigation Services



Appleton Dock B berth – Bollard availability during works