

The following Notice to Mariners is published for general information

Australia – Victoria

No. 411 (T) - 2024

**PORT OF MELBOURNE
PORT PHILLIP BAY
AIDS TO NAVIGATION SURVEY**

Date: 1 October 2024

Refers: N/A

Details: Mariners are advised that survey work will be undertaken on *Point Lonsdale Light* and *Queenscliff High Light* during daylight hours on **2 October 2024**.

The survey will involve altering light characteristics to **FIXED ON** for short periods on the following Aids to Navigation:

- **Point Lonsdale Light: LFI (2) WRG, 15s 37m 12/10M**
Lat/Long: 38° 17.522' S 144° 36.84' E (K2194)
- **Queenscliff High Light: F&Oc.W. 15s 40m 14M**
Lat/Long: 38° 16.30' S, 144° 39.71' E (K2200)

Works will be conducted around shipping movements by survey vessel *John Norgate*, contactable on **VHF Channel 12** or **0488 471 257**.

Mariners are advised to navigate with additional caution in the vicinity of survey works.

For further information, please email the Navigation Services department at NavigationServices@ports.vic.gov.au or contact Lonsdale VTS on 9644 9700 / VHF Channel 12.

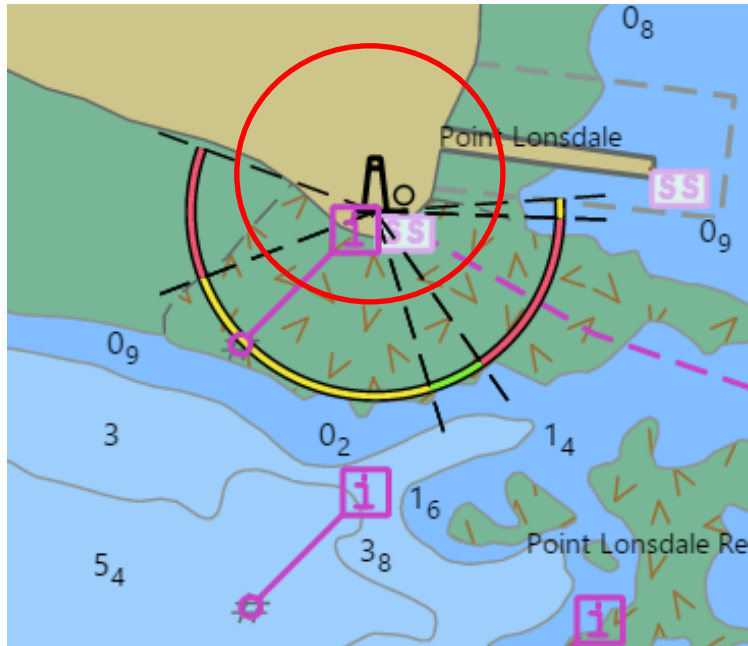
**Charts &
Publications
affected:**

ENC AU5RIP01

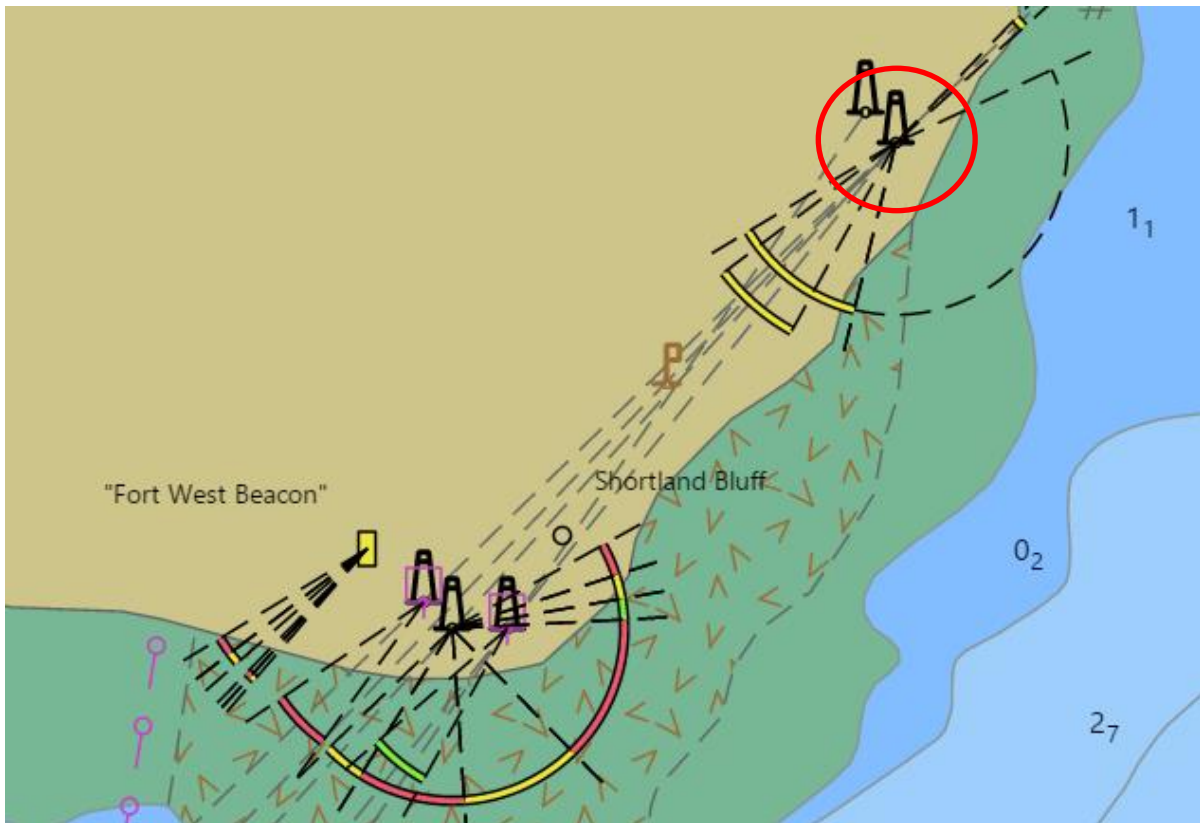
Further notice: This is a self-cancelling NtM, and no further notice will be issued.



Paul Fleming
Acting Deputy Harbour Master
Navigation Services



Point Lonsdale Light: LFI (2) WRG,15s 37m 12/10M
 Lat/Long: 38° 17.522' S 144° 36.84' E (K2194)
NOT FOR NAVIGATIONAL USE



Queenscliff High Light: F&Oc.W.15s 40m 14M
 Lat/Long: 38° 16.30' S, 144° 39.71' E (K2200)
NOT FOR NAVIGATIONAL USE

This notice is a direction of the Harbour Master pursuant to section 232 of the *Marine Safety Act 2010* (Vic)
 The requirements of section 232(2) have been taken into account.