

The following Notice to Mariners is published for general information

Australia – Victoria

No. 174 (T) - 2024

**PORT OF MELBOURNE
SOUTH CHANNEL
HOVELL PILE LIGHT UNLIT**

Date: 23 April 2024

Refers: N/A

Details: Mariners are advised **Hovell Pile** (Fl.W.3s & F.Bu) located in position **38° 19.627' S 144° 53.923' E** has been reported as follows:

- Flashing white (Fl.W.3s) light **unlit**
- Fixed blue (F.Bu) light **dim**

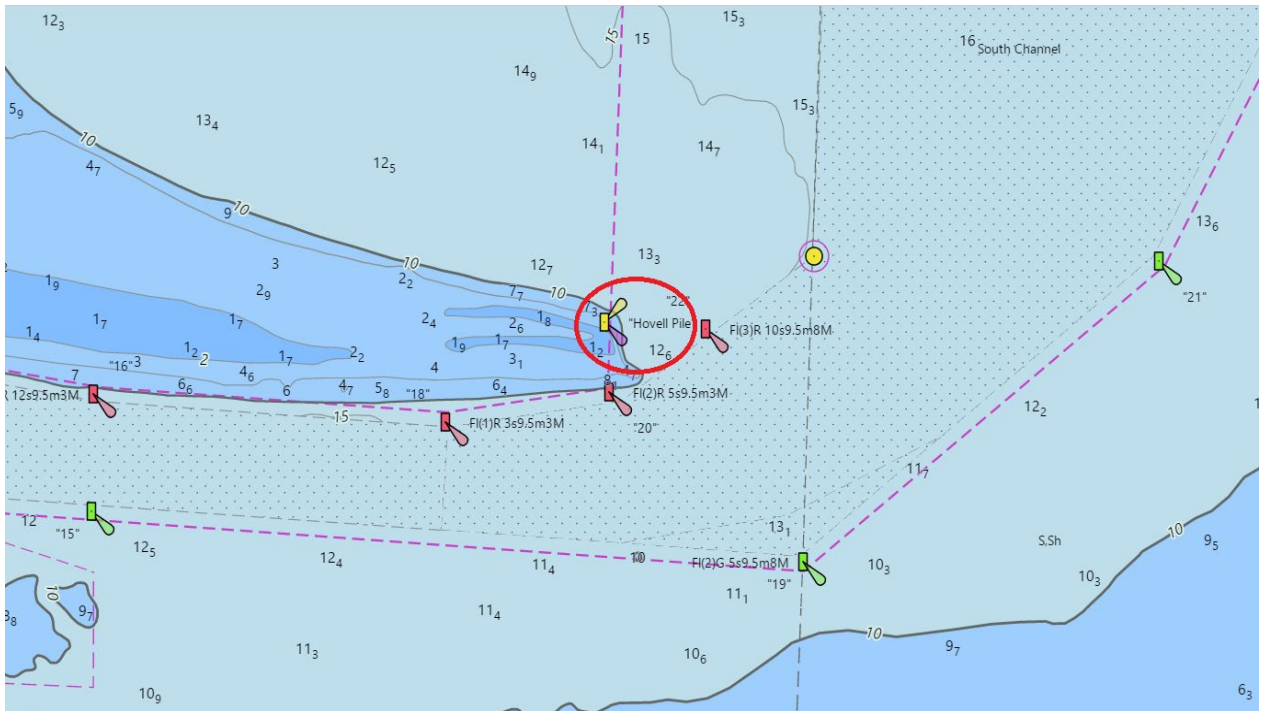
Mariners are advised to navigate with additional caution in the vicinity of Hovell Pile.

Charts & Publications affected: ENC AU5RIP01
Admiralty Digital List of Lights – Area 7 – Volume K – K2324

Further notice: Further notice will be issued.



David Tilsley
Deputy Harbour Master
Navigation Services



NOT FOR NAVIGATIONAL USE

This notice is a direction of the Harbour Master pursuant to section 232 of the *Marine Safety Act 2010 (Vic)*
 The requirements of section 232(2) have been taken into account.

Ports Victoria Notices to Mariners can be downloaded from the website, www.vicports.vic.gov.au