

The following Notice to Mariners is published for general information

## Australia – Victoria

No. 165 (P) - 2024

### PORT OF MELBOURNE WILLIAMSTOWN MARITIME PRECINCT 5 KNOT SPEED LIMIT ZONE

**Date:** 19 April 2024

**Refers:** N/A

**Details:** Mariners and port users are advised that a new **5 knot speed limit zone** for the **Williamstown Maritime Precinct** within the port waters of the port of Melbourne (refer attached chartlet), will take effect on **30 April 2024**.

A key recommendation from the *Williamstown Maritime Precinct Wave, Wash and Surge Study 2022 (WWS Study)*, the new 5 knot speed limit zone will be established as a waterway rule under **Schedule 2** of the **Vessel Operating & Zoning Rules for Victorian Waters (VOZR)** as follows:

#### **2.7 Five (5) knot speed restriction for the purposes of Clause 7**

*All vessels are subject to a speed limit of 5 knots on the waters of the Williamstown Maritime Precinct within the port waters of the Port of Melbourne from the Williamstown shoreline bound by the port limit, extending from the shoreline along the western side of Anne Street Pier, then west to the head of Boyd Pier<sup>1</sup>, then north easterly to a point<sup>2</sup> approximately 600 metres off the head of Boyd Pier, following the port of Melbourne port limits north west through point<sup>3</sup> to a point west of beacon 24<sup>4</sup>, then following the Williamstown Channel south east through points<sup>5-6</sup>, to a point west of beacon 22<sup>7</sup> and a point west of beacon 20<sup>8</sup> to a point west of Gellibrand Pier Light Bouy<sup>9</sup>, then south along the western side of Gellibrand Pier to the shoreline.*

#### **2.13 Exclusive use and special purpose areas for the purposes of Clause 13**

(b) *Williamstown Maritime Precinct - control of vessels*

*The following vessels are exempt from the provisions of clause 2.7.3 of this Notice, and a master of these vessels must not exceed 5 knots within 200 metres of the Williamstown foreshore:*

- (i) *Sea planes*
- (ii) *Vessels under sail*

Reference Point	Latitude	Longitude
1	37°51.685' S	144°54.519' E
2	37° 51.39' S	144° 54.678' E
3	37° 51.174' S	144° 54.48' E
4	37° 51.108' S	144° 54.408' E
5	37° 51.114' S	144° 54.42' E
6	37° 51.168' S	144° 54.486' E
7	37° 51.27' S	144° 54.582' E
8	37° 51.492' S	144° 54.786' E
9	37° 51.69' S	144° 54.972' E

The new 5 knot speed limit zone in the port waters of the port of Melbourne is adjacent to a new, reciprocal Parks Victoria 5 knot speed limit zone, both zones are illustrated in the attached chartlet. The Parks Victoria 5 knot speed limit zone in the Williamstown Maritime Precinct will also take effect at the same time on **30 April 2024**.

A Notice to Mariners will be promulgated on **30 April 2024** advising mariners that the 5 knot speed limit zone in the Williamstown Maritime Precinct is in effect.

For further information, please email the Navigation Services department at [NavigationServices@ports.vic.gov.au](mailto:NavigationServices@ports.vic.gov.au).

**Charts & Publications affected:**

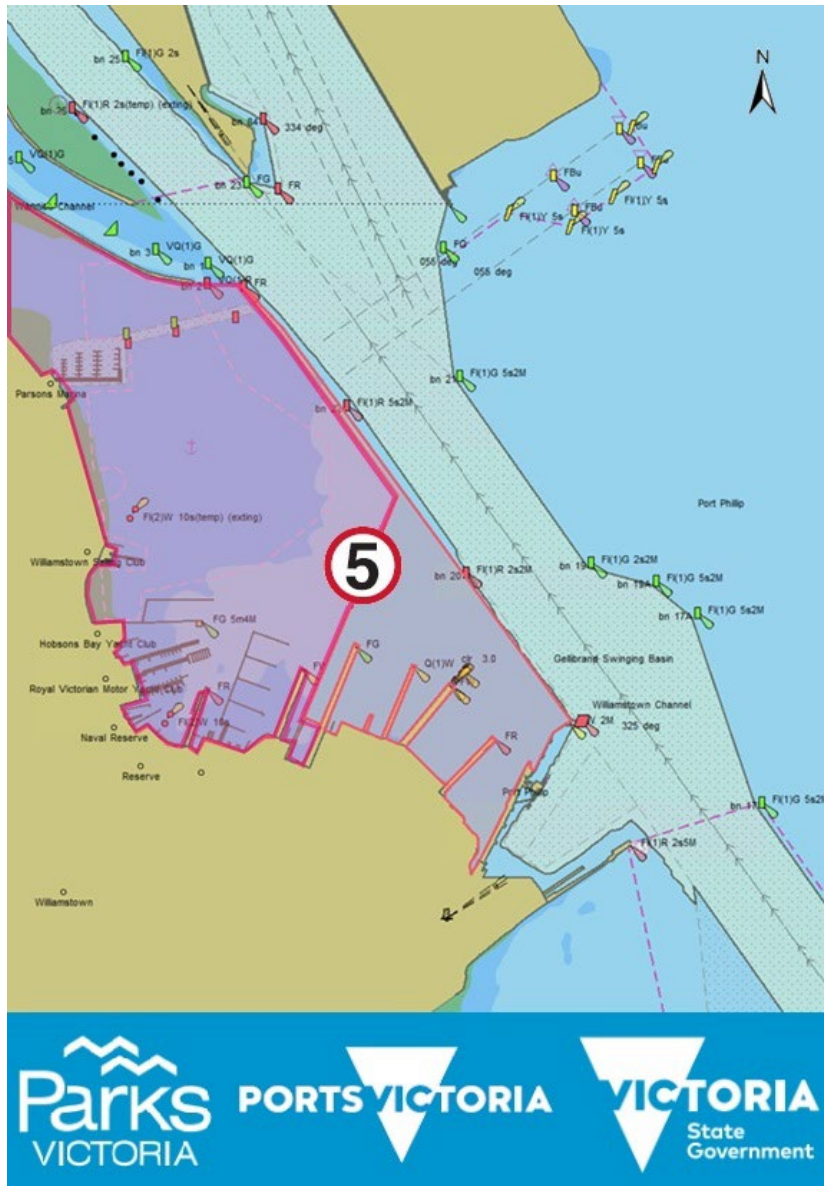
AUS 155  
ENC AU5MEL01  
Vessel Operating & Zoning Rules for Victorian Waters

**Further notice:**

Further notice will be issued.



**David Tilsley**  
Deputy Harbour Master  
Navigation Services



New Williamstown 5 knot speed limit zone (Port of Melbourne and Parks Victoria waters)

**NOT FOR NAVIGATIONAL USE**

This notice is a direction of the Harbour Master pursuant to section 232 of the *Marine Safety Act 2010* (Vic). The requirements of section 232(2) have been taken into account.