

The following Notice to Mariners is published for general information

Australia – Victoria

No. 152 (T) - 2024

PORT OF MELBOURNE SWANSON DOCK 1 EAST REMEDICATION WORKS

Date: 10 April 2024

Refers: N/A

Details: Mariners are advised that bollard remediation and pavement remediation works will be undertaken at **Swanson Dock East** from **11 April 2024** to approximately **31 July 2024**.

Swanson Dock East No. 1 berth will not be available for commercial vessels (SOLAS) between chainage **0m to 190m** (reference site plan).

The southern most bollard available for use is located at **chainage 205m** (reference bollard availability diagram).

The remediation works will be conducted from **Monday to Friday 0700 to 1800 hrs and Saturday 0700 to 1300 hrs**. Works will be undertaken from shore side, including under wharf works from platforms and work boats. The works supervisor may be contacted on **0419 381 228**.

Works personnel will monitor shipping movements and suspend under wharf works for arrival and departure of commercial vessels (SOLAS) from Swanson Dock.

Restrictions for passing **domestic commercial vessels** during remediation works:

- **Minimum passing distance of 25m**
- **Minimum wake and wash**

For more information, please email the Navigation Services department at NavigationServices@ports.vic.gov.au or contact Melbourne VTS on 9644 9700 or on VHF Channel 12.

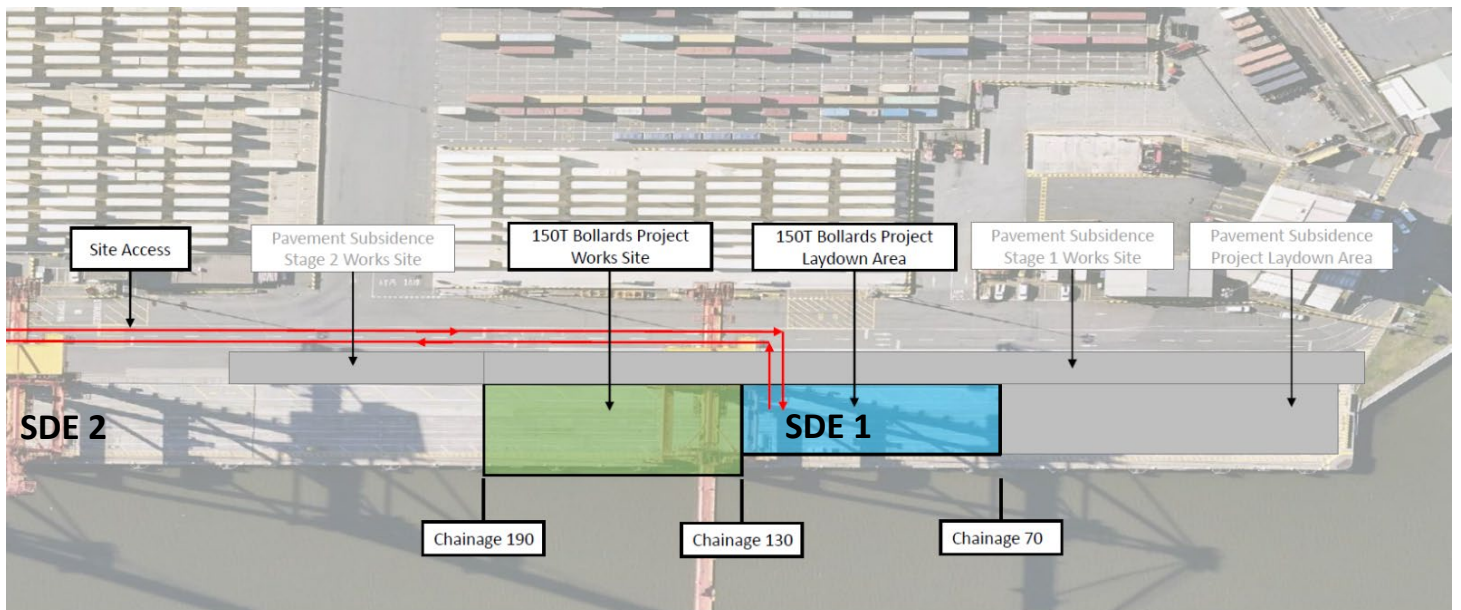
Mariners are advised to navigate with caution in the vicinity of Swanson Dock East No. 1 berth during the period of works.

Charts & Publications affected: ENC AU5MEL01

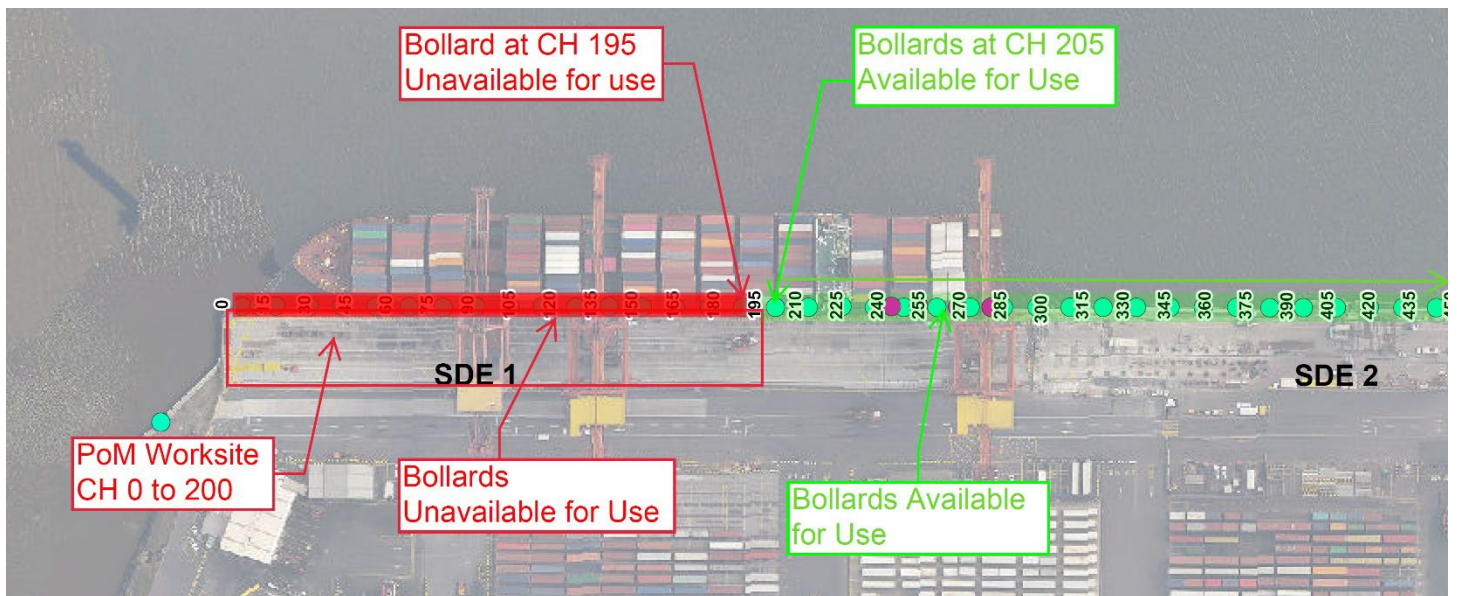
Further notice: Further notice will be issued.



**David Tilsley
Deputy Harbour Master
Navigation Services**



Swanson Dock East – Site plan



Swanson Dock East – Bollard availability

This notice is a direction of the Harbour Master pursuant to section 232 of the *Marine Safety Act 2010* (Vic)
 The requirements of section 232(2) have been taken into account.