

Australia – Victoria

No. 121 (T) - 2024

PORT OF MELBOURNE APPLETON DOCK SURVEY WORKS

Date: 15 March 2024

Refers: N/A

Details: Mariners and port users are advised that survey works, involving drone and diving operations, are expected to take place at **Appleton Dock B to F berths** (reference attached chartlet), from **18 March 2024** until approximately **May 2024**.

Survey works will be conducted **around shipping movements** and subject to berth availability.

Remotely piloted drone operations will be supported by the following vessels:

- ***Mable***
- ***Nuwi***

Diving operations will be supported by the following vessels:

- ***MV Pro Diver***
- ***MV Jazz***

Restrictions for passing domestic commercial vessels and recreational vessels during **diving operations**:

- ***Minimum passing distance of 50m***

Dive vessels will display International Code flag Alpha during diving operations.

Works supervisor can be contacted on **0488 198 299**. Vessels supporting works can be contacted on VHF Channel 12.

For further information, please email the Navigation Services department at NavigationServices@ports.vic.gov.au or contact Melbourne VTS on 9644 9700 or VHF Channel 12.

Mariners are advised to navigate with additional caution in the vicinity of survey works.

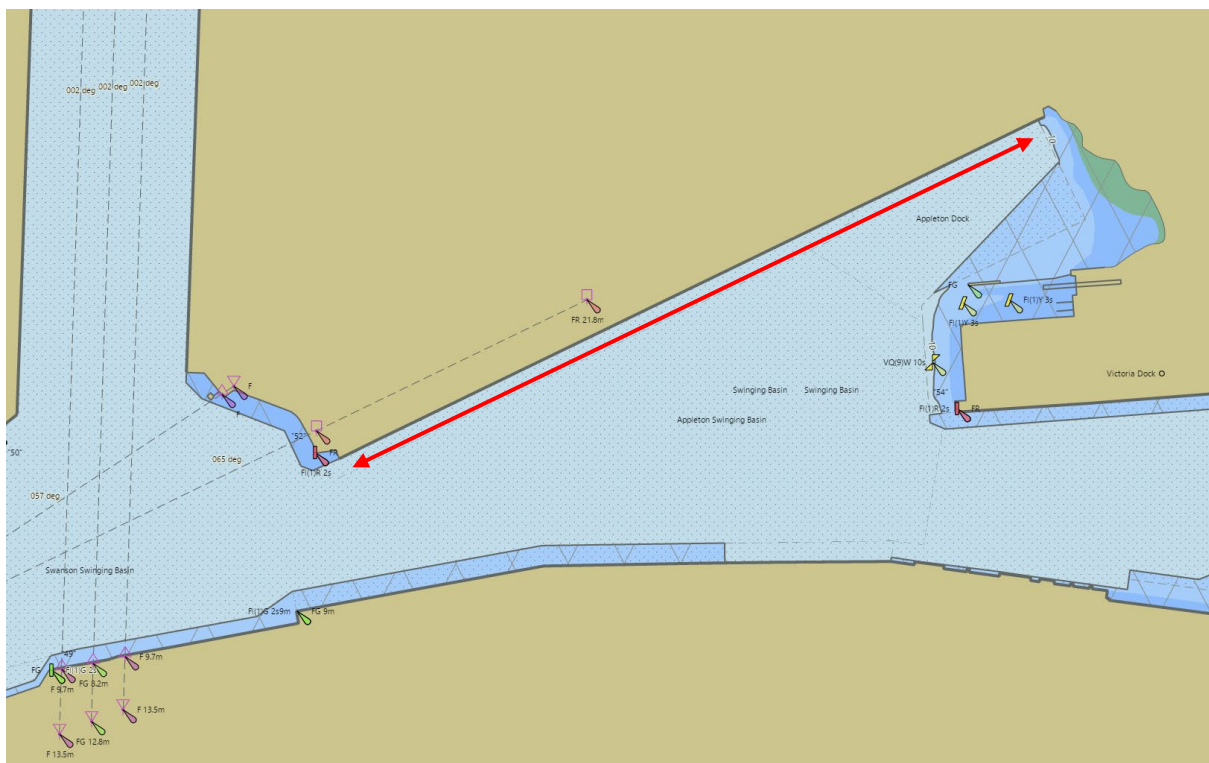
**Charts &
Publications
affected:**

ENC AU5MEL01

Further notice: Further notice will be issued.



**David Tilsley
Deputy Harbour Master
Navigation Services**



NOT FOR NAVIGATIONAL USE

This notice is a direction of the Harbour Master pursuant to section 232 of the *Marine Safety Act 2010* (Vic)
The requirements of section 232(2) have been taken into account.

Ports Victoria Notices to Mariners can be downloaded from the website, www.vicports.vic.gov.au