

The following Notice to Mariners is published for general information

Australia – Victoria

No. 010 (T) - 2024

PORT OF MELBOURNE
SWANSON DOCK
LEADING LIGHTS UNRELIABLE

Date: 11 January 2024

Refers: N/A

Details: Mariners and port users are advised that the below listed **Swanson Dock leading lights** have recently experienced outages. Unexpected outages may continue and therefore the following leading lights should be considered **unreliable**:

Light	Position	Characteristic
Front Centre	37° 48.56'S 144° 54.83'E	3 F G Triangle
Rear Centre	37° 48.46'S 144° 54.83'E	3 F G Triangle
Front East	37° 48.56'S 144° 54.86'E	F B Triangle
Rear East	37° 48.46'S 144° 54.86'E	F B Triangle
Front West	37° 48.56'S 144° 54.80'E	F B Triangle
Rear West	37° 48.46'S 144° 54.81'E	F B Triangle

Melbourne VTS will advise vessels of the operational status of Swanson Dock leading lights prior to arrival and departure from Swanson Dock.

Mariners are advised to navigate with additional caution.

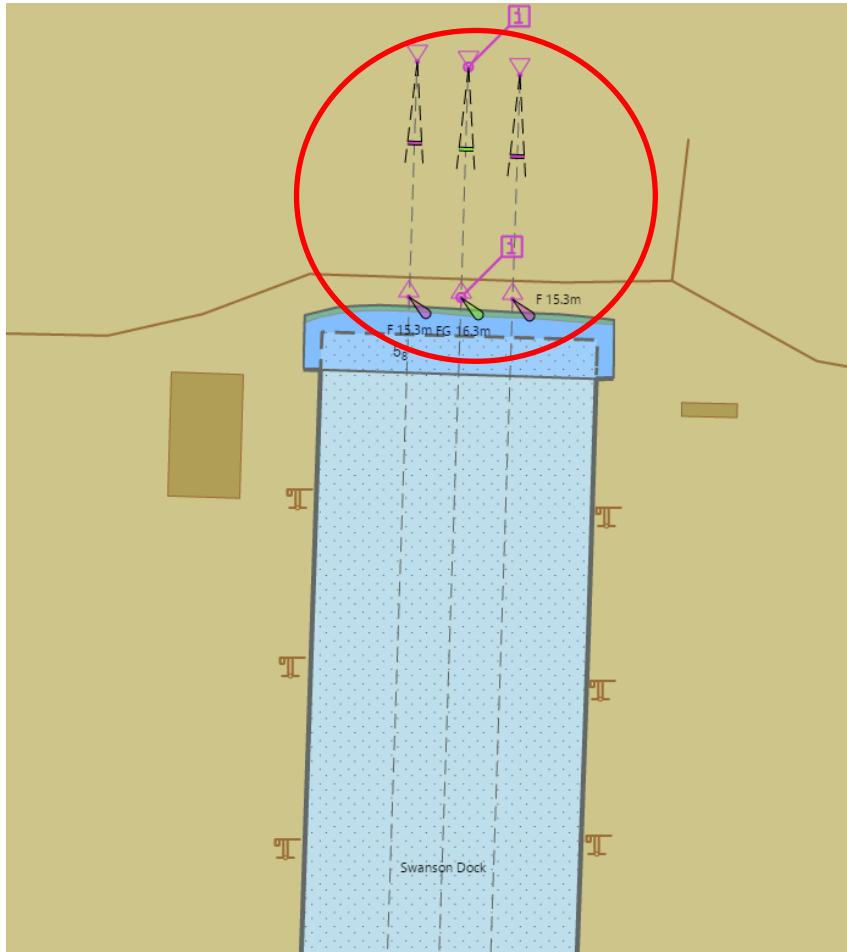
For more information, contact Melbourne VTS on 9644 9700 or VHF Channel 12.

Charts & Publications affected: AU5MEL01
Admiralty List of Lights, Volume K

Further notice: Further notice will be issued.



David Tilsley
Deputy Harbour Master
Navigation Services



NOT FOR NAVIGATIONAL USE

K 2406-7	-- Ldg Lts 001-9'. Front. Centre	37°48-56'S 144°54-83'E	3 F G(vert)	16 m	..	3 green Δ on pole
K 2406-71	--- Rear. Centre	37°48-46'S 144°54-83'E	3 F G(vert)	15 m	..	3 green ∇ on pole
K 2406-72	--- Front. East	37°48-56'S 144°54-86'E	F Bu	15 m	..	Blue Δ on pole
K 2406-721	--- Rear. East	37°48-46'S 144°54-86'E	F Bu	16 m	..	Blue ∇ on pole
K 2406-73	--- Front. West	37°48-56'S 144°54-80'E	F Bu	15 m	..	Blue Δ on pole
K 2406-731	--- Rear. West	37°48-46'S 144°54-81'E	F Bu	16 m	..	Blue ∇ on pole

Admiralty List of Lights, Volume K

This notice is a direction of the Harbour Master pursuant to section 232 of the *Marine Safety Act 2010* (Vic)
The requirements of section 232(2) have been taken into account.