

The following Notice to Mariners is published for general information

**Australia – Victoria**

**No. 428 (T) - 2023**

**PORT OF MELBOURNE  
YARRA RIVER  
BEACON 32 PILE REPLACEMENT**

**Date:** 25 October 2023

**Refers:** NtM 221 (T) - 23

**Details:** Mariners and port users are advised that pile replacement works for **Yarra River Beacon 32 (37° 50.327' S 144° 53.781' E)** will commence on **26 October 2023**. Works will be conducted during daylight hours and will include diving operations. Pile replacement works are expected to take approximately **3 days**.

Pile replacement works will be supported by the following vessels:

- **Tarree**
- **JUB11**
- **Taurus**
- **First Class**

Passing of Beacon 32 during works by commercial vessels (SOLAS) and attending tugs will **not be permitted** when work vessels and barges are established as per **configuration #1** (reference attached image). The work vessels and barges will only be established in configuration #1 for an approximate duration of 30 minutes at the commencement of works.

Passing of Beacon 32 during works by commercial vessels (SOLAS) and attending tugs when work vessels and barges are established as per **configuration #2** (reference attached image) will be permitted with the following conditions:

- **Passing speed 6 kts (where possible)**
- **Personnel to be clear from work barges**
- **No diving operations**
- **No vessels to be moored to work barges**

Passing of Beacon 32 during works by domestic commercial vessels (DCV) and recreational craft when work vessels and barges are established in either **configuration #1 or #2** will be permitted with the following conditions:

- **Minimum wake and wash**
- **Minimum passing distance of 50m**

International code flag Alpha will be exhibited during diving operations.

The works supervisor can be contacted on **0488 939 222** and vessel **Taurus** on **VHF channel 12**.

**Mariners are advised to navigate with additional caution in the vicinity of Beacon 32 works and adhere to passing conditions.**

For more information, contact Melbourne VTS on 9644 9700 or VHF channel 12.

**Charts &  
Publications  
affected:**

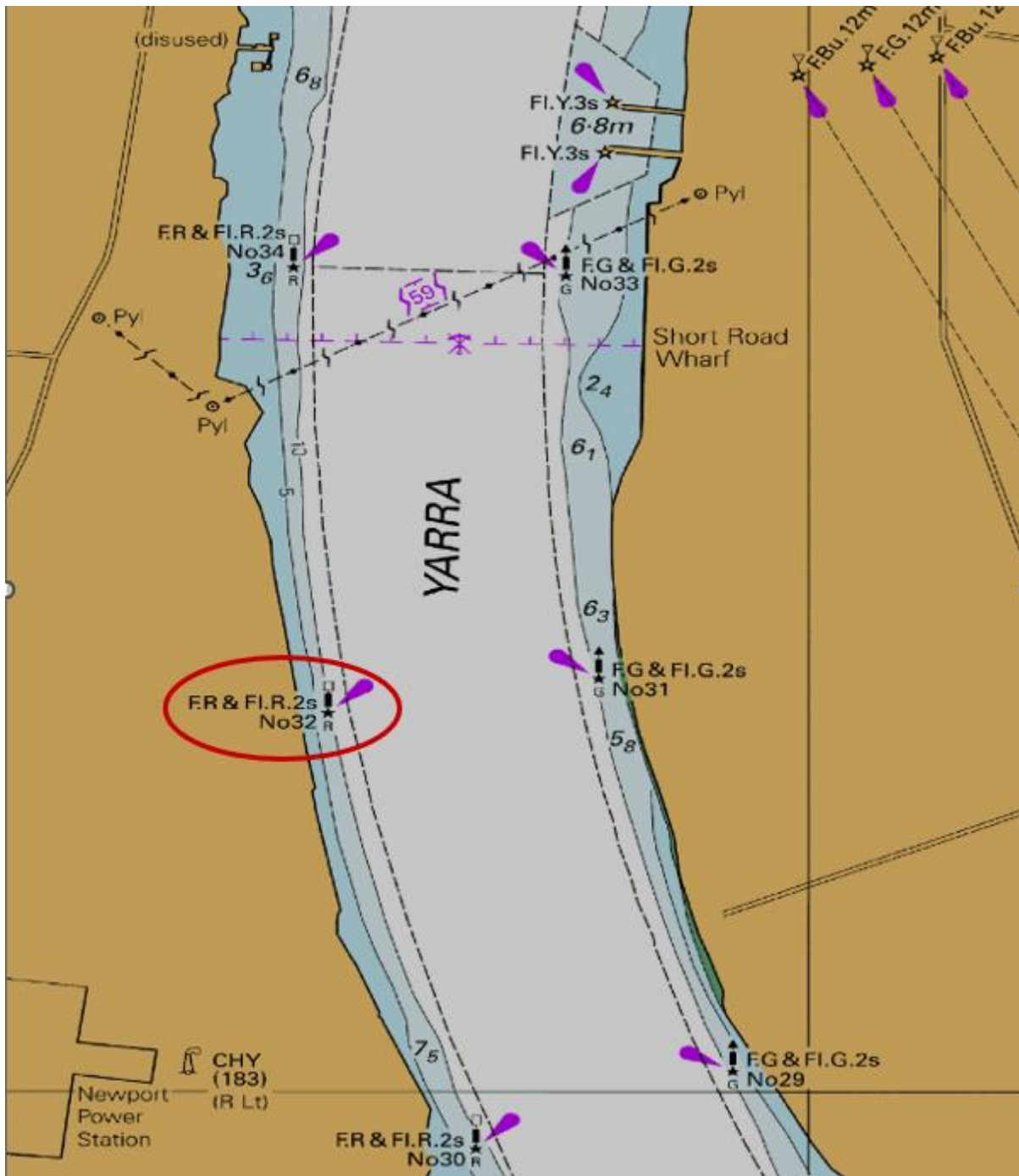
ENC AU5MEL01

**Further notice:**

Further notice will be issued.



**David Tilsley  
Deputy Harbour Master  
(Navigation Services)**



**NOT FOR NAVIGATIONAL USE**

This notice is a direction of the Harbour Master pursuant to section 232 of the *Marine Safety Act 2010* (Vic). The requirements of section 232(2) have been taken into account.

Ports Victoria Notices to Mariners can be downloaded from the website, [www.vicports.vic.gov.au](http://www.vicports.vic.gov.au)



**Work vessels and barges plan - Configuration #1**



**Work vessels and barges plan - Configuration #2**

This notice is a direction of the Harbour Master pursuant to section 232 of the *Marine Safety Act 2010* (Vic)  
 The requirements of section 232(2) have been taken into account.



*Taree*



*Taurus*

This notice is a direction of the Harbour Master pursuant to section 232 of the *Marine Safety Act 2010* (Vic)  
The requirements of section 232(2) have been taken into account.

---

Ports Victoria Notices to Mariners can be downloaded from the website, [www.vicports.vic.gov.au](http://www.vicports.vic.gov.au)



***Jub 11***



***First Class***

This notice is a direction of the Harbour Master pursuant to section 232 of the *Marine Safety Act 2010* (Vic)  
The requirements of section 232(2) have been taken into account.

---

Ports Victoria Notices to Mariners can be downloaded from the website, [www.vicports.vic.gov.au](http://www.vicports.vic.gov.au)