

The following Notice to Mariners is published for general information

Australia – Victoria

No. 405 (T) - 2023

**PORT OF MELBOURNE
POINT LONSDALE REEF
VESSEL WRECK**

Date: 6 October 2023

Refers: N/A

Details: Mariners and port users are advised that a wreck (Pilot Vessel) exists in the following position:

- **38° 17.779' S 144° 37.038' E**

A virtual aid to navigation **TB7** has been established in the wreck position. An exclusion zone consisting of **100m** exists centred on the wreck position. No vessels (excluding those authorised) are permitted to enter this exclusion zone.

Foam and fibreglass debris may be present in the vicinity of Point Lonsdale Reef and Lonsdale Bay.

Any sightings of debris on the water can be reported to Lonsdale VTS on 9644 9700 or on VHF Channel 12.

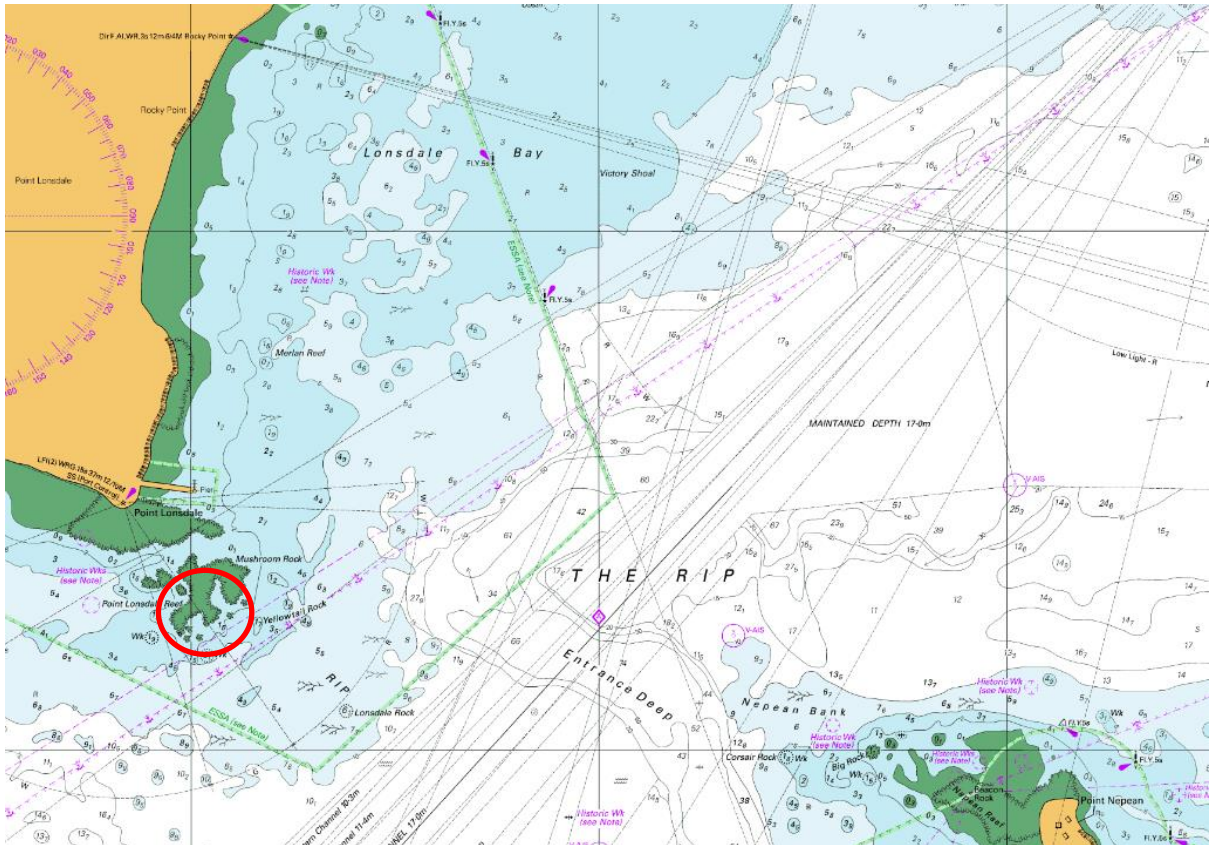
Mariners are advised to navigate with additional caution in the vicinity of the Fairway Through Port Phillip Heads.

Charts & Publications affected: AUS 144
ENC AU5RIP01

Further notice: Further notice will be issued.



**David Tilsley
Deputy Harbour Master
(Navigation Services)**



NOT FOR NAVIGATION

This notice is a direction of the Harbour Master pursuant to section 232 of the *Marine Safety Act 2010* (Vic)
The requirements of section 232(2) have been taken into account.

Ports Victoria Notices to Mariners can be downloaded from the website, www.vicports.vic.gov.au