

## Australia – Victoria

No. 432 (T) - 2022

### PORT OF MELBOURNE CHANNEL REACH BETWEEN APPLETON DOCK AND BOLTE BRIDGE REDUCTION IN MAINTAINED DEPTH

**Date:** 1 December 2022

**Refers:** N/A

**Details:** Mariners are advised that a reduction in maintained depth has been declared in the channel reach between Appleton Dock and Bolte Bridge.

**3.8.** Under keel clearance - Table 3(f) Minimum permissible UKC for vessels with draughts less than 11.6 m - Harbour Master's Directions – Melbourne Edition 13 – amended as follows:

Channel reach	General description	Maintained depth (m)	Minimum UKC (m)	Maximum draught at zero tide (m) <sup>1</sup>
Between Appleton Dock and Bolte Bridge	Between Appleton Dock and Bolte Bridge	10.5	0.6	9.9

<sup>1</sup> To determine the actual maximum permissible draught, tide height above or below the Chart Datum will need to be incorporated, and the values in this column are given for example purposes only. Note that if there is a negative tide height the maximum permissible draught will need to be reduced accordingly.

For more information, please contact Melbourne VTS on (03) 9644 9700 or on VHF Channel 12.

**Charts & Publications affected**

Harbour Master's Directions - Melbourne Edition 13, September 2022  
ENC AU5MEL01

**Further  
notice:**

Further notice will be issued.



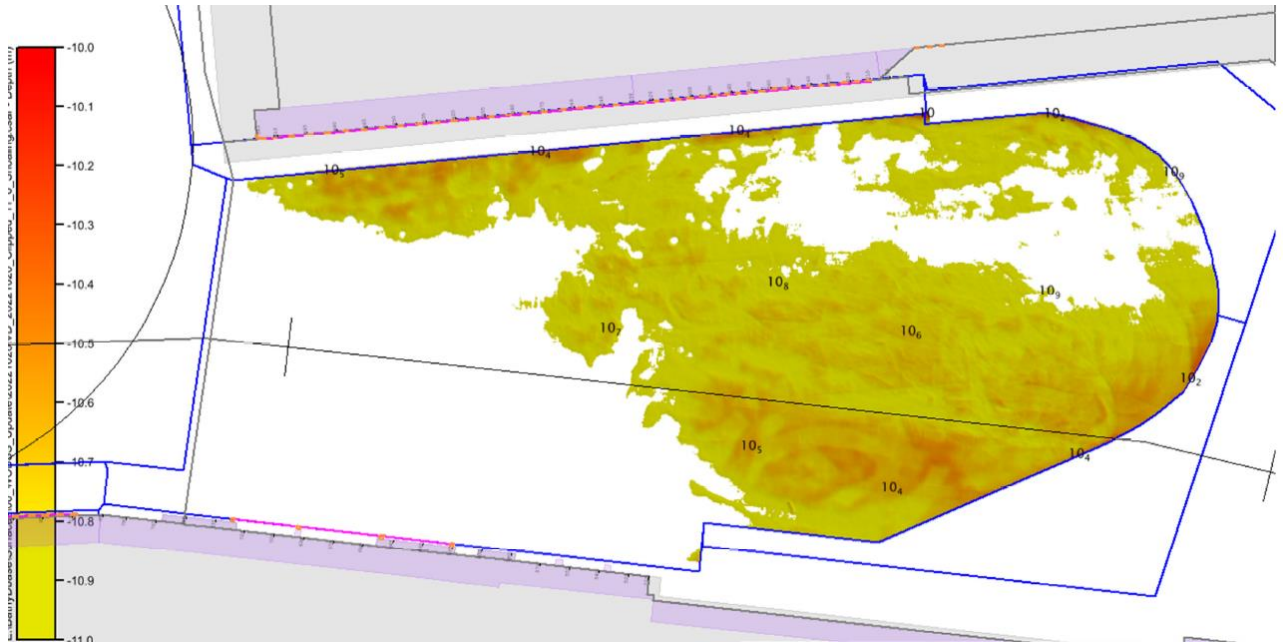
**Warwick Laing  
Harbour Master**

This notice is a direction of the Harbour Master pursuant to section 232 of the *Marine Safety Act 2010* (Vic)  
The requirements of section 232(2) have been taken into account.

---

Victorian Notices to Mariners can be downloaded from the Victorian Ports Corporation (Melbourne) website  
[www.vicports.vic.gov.au](http://www.vicports.vic.gov.au)

### Survey image – Channel reach between Appleton Dock and Bolte Bridge



This notice is a direction of the Harbour Master pursuant to section 232 of the *Marine Safety Act 2010* (Vic)  
The requirements of section 232(2) have been taken into account.

Victorian Notices to Mariners can be downloaded from the Victorian Ports Corporation (Melbourne) website  
[www.vicports.vic.gov.au](http://www.vicports.vic.gov.au)