

The following Notice to Mariners is published for general information

Australia – Victoria

No. 430 (T) - 2022

PORT OF MELBOURNE
STATION PIER SWING BASIN
REDUCTION IN MAINTAINED DEPTH

Date: 1 December 2022

Refers: N/A

Details: Mariners are advised that a reduction in maintained depth has been declared in the Station Pier Swing Basin.

3.16. Swinging basins - Table 3(k) – Swinging basin dimensions - Harbour Master's Directions – Melbourne Edition 13 – amended as follows:

Swinging basin	Diameter (m)	Maintained depth (m)	Max. draught at zero tide (m)
Station Pier	450 ¹	10.7	10.1

¹ When Station Pier Outer West berth is occupied this diameter is reduced.

For more information, contact Melbourne VTS on (03) 9644 9700 or on VHF Channel 12.

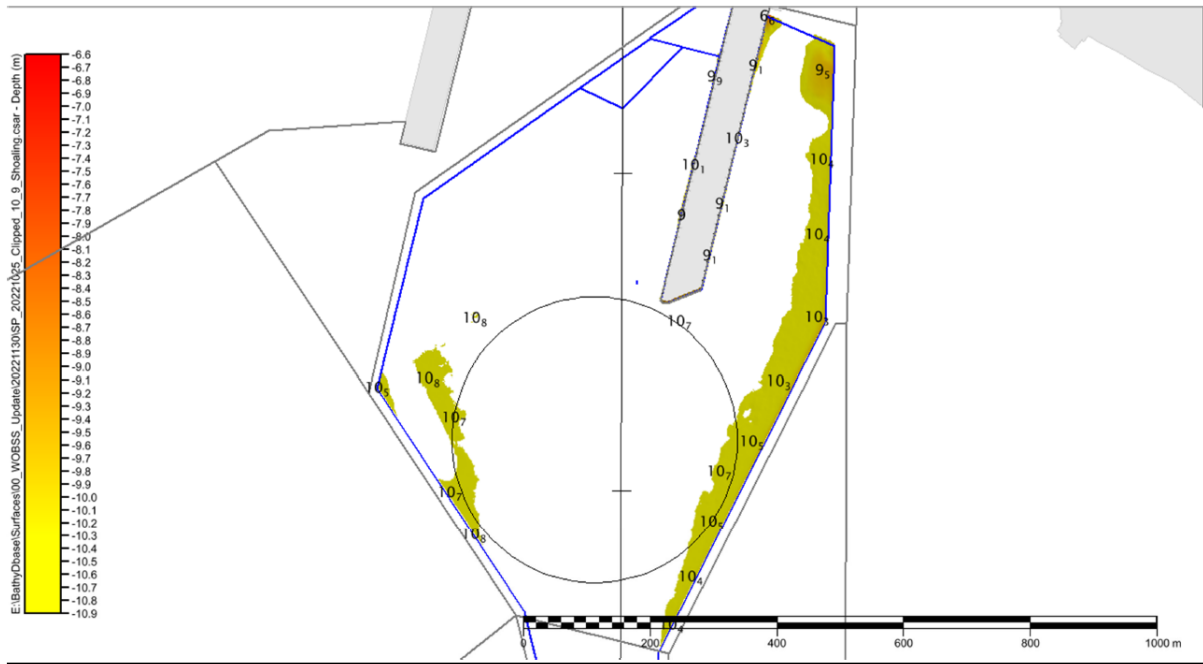
Charts & Publications affected Harbour Master's Directions - Melbourne Edition 13, September 2022
ENC AU5MEL01

Further notice: Further notice will be issued.



Warwick Laing
Harbour Master

Survey image – Station Pier Swing Basin



This notice is a direction of the Harbour Master pursuant to section 232 of the *Marine Safety Act 2010* (Vic)
The requirements of section 232(2) have been taken into account.

Victorian Notices to Mariners can be downloaded from the Victorian Ports Corporation (Melbourne) website
www.vicports.vic.gov.au