

The following Notice to Mariners is published for general information

**Australia – Victoria**

**No. 415 (T) - 2022**

**PORT OF MELBOURNE  
PORT PHILLIP BAY  
EAST CARDINAL MARK BUOY - RECOVERED**

**Date:** 22 November 2022

**Refers:** NtM 412 (T) – 2022 and is hereby cancelled.

**Details:** Mariners are advised that the East Cardinal Mark Buoy Q (3) 10s originally established in the following position **38° 13.909'S 144° 50.614'E**, located to the north-east of the Pinnacle Channel Aquaculture Reserve, has been recovered.

**Mariners are advised to navigate with additional caution in the vicinity of the Pinnacle Channel Aquaculture Reserve.**

For further information, please contact Melbourne VTS on VHF Channel 12 or 9644 9700.

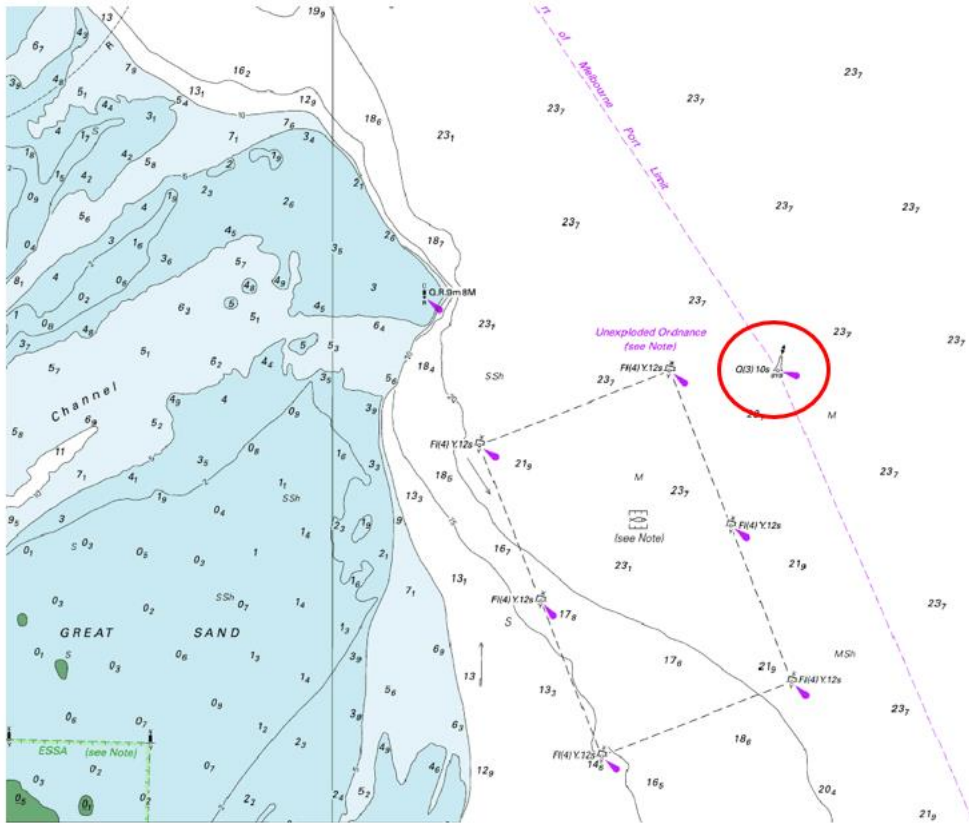
**Charts &  
Publications  
affected** AUS 143

**Further  
notice:** Further notice will be issued.



**Warwick Laing  
Harbour Master**

## East Cardinal Mark Buoy - recovered



This notice is a direction of the Harbour Master pursuant to section 232 of the *Marine Safety Act 2010* (Vic). The requirements of section 232(2) have been taken into account.

Victorian Notices to Mariners can be downloaded from the Victorian Ports Corporation (Melbourne) website [www.vicports.vic.gov.au](http://www.vicports.vic.gov.au)