

The following Notice to Mariners is published for general information

Australia – Victoria
No. 386 (T) - 2022
PORT OF MELBOURNE
YARRAVILLE SWING BASIN
REDUCTION IN MAINTAINED DEPTH

Date: 8 November 2022

Refers: N/A

Details: Mariners are advised that a reduction in maintained depth has been identified in the Yarraville Swing Basin.

3.16. Swinging basins - Table 3(k) – Swinging basin dimensions - Harbour Master's Directions – Melbourne Edition 13 – amended as follows:

Swinging basin	Diameter (m)	Maintained depth (m)	Max. draught at zero tide (m)
Yarraville	274 ³	10.4	9.8

³ *Swinging basin diameter is reduced when vessels occupy berths at Yarraville*

For more information, contact Melbourne VTS on 9644 9700 or VHF Channel 12.

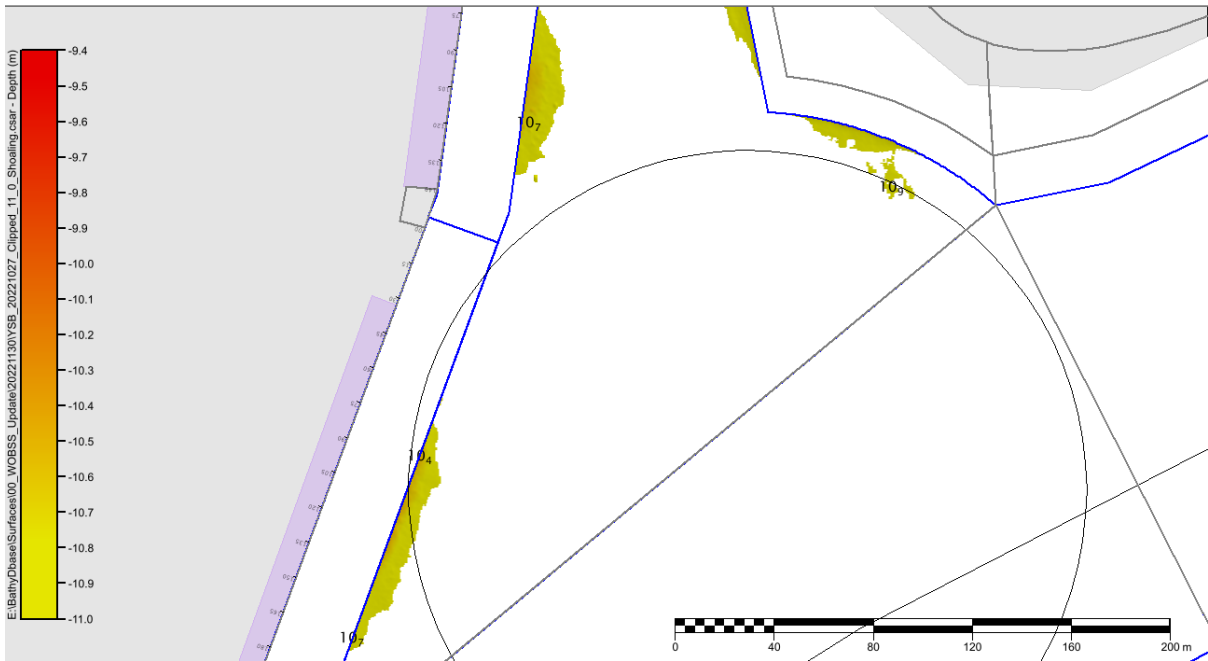
Charts & Publications affected Harbour Master's Directions - Melbourne Edition 13, September 2022
 ENC AU5MEL01

Further notice: Further notice will be issued.



Warwick Laing
Harbour Master

Survey image – Yarraville Swing Basin



This notice is a direction of the Harbour Master pursuant to section 232 of the *Marine Safety Act 2010* (Vic)
The requirements of section 232(2) have been taken into account.

Victorian Notices to Mariners can be downloaded from the Victorian Ports Corporation (Melbourne) website
www.vicports.vic.gov.au