

**Australia – Victoria**

**No. 371 (T) - 2022**

**PORT OF MELBOURNE  
YARRAVILLE 5 BERTH OPEN  
REDECLARED MAINTAINED DEPTH**

**Date:** 27 October 2022

**Refers:** NtM 357 (T) / 2022 and is hereby cancelled.  
NtM 365 (T) / 2022 and is hereby cancelled.

**Details:** Mariners are advised that from the recent sweeping works, the maintained depth has been redeclared in the berth pocket of Yarraville 5 and the berth is now open to vessels.

The maintained depth of Yarraville 5 berth pocket is now restored as per below.

**3.15** Berth information, berthing and unberthing - Table 3(j) – Harbour Master's

Directions – Melbourne Edition 13 – amended as follows:

Berth		Maintained depth (m)	Ship's limits at berth (m)		Wharf height (m) above Chart Datum	General remarks
Name	Length (m)	Berth	Max. draught	Max. length		
Yarraville 5	148	9.5	8.9	180	3.5	Bulk sugar/gypsum Beam >28.6 m: vessel to move clear of Maribyrnong River channel for all movements to/from Maribyrnong No. 1 berth (vessel must shift as directed by Melbourne VTS) <i>Maximum 16 m overlap allowed at each end</i>

For further information, please contact Melbourne VTS on (03) 9644 9700 or on VHF Channel 12.

**Charts &  
Publications  
affected**

Harbour Master's Directions - Melbourne Edition 13, September 2022  
ENC AU5MEL01

**Further  
notice:**

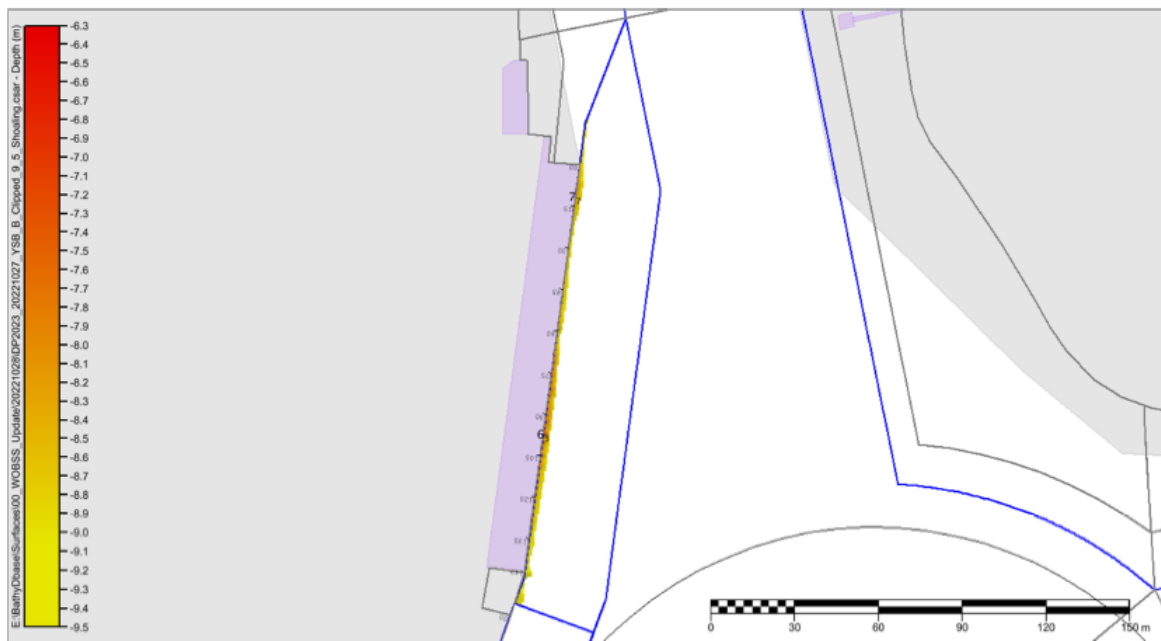
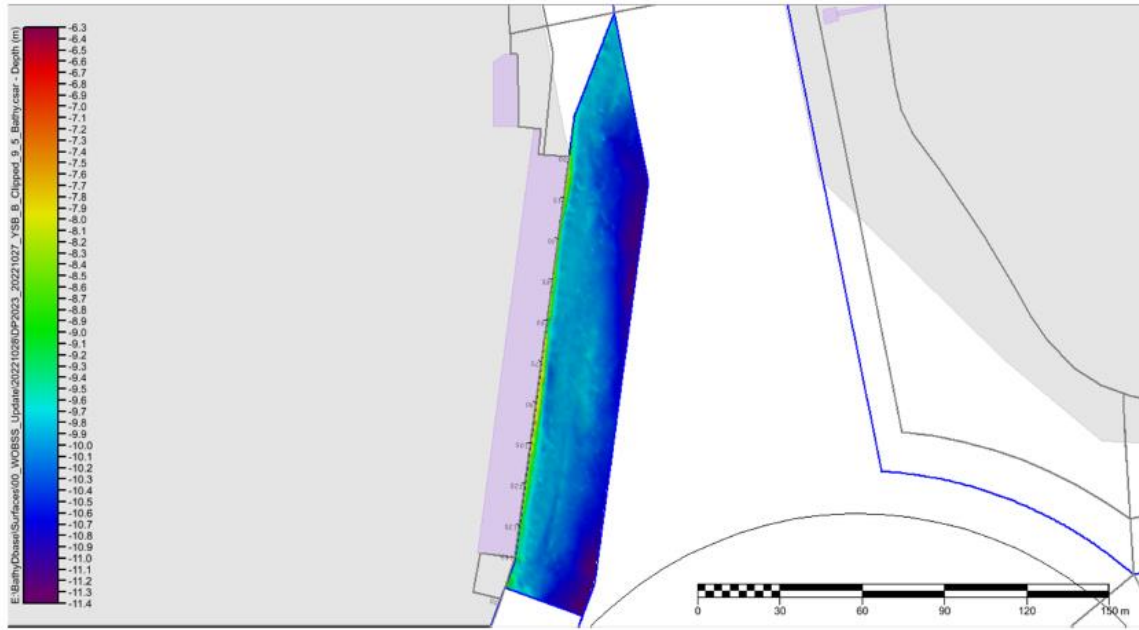
This is a self-cancelling NtM, and no further notice will be issued.



**David Tilsley  
Deputy Harbour Master  
(Navigation Services)**

## Survey images of Yarraville 5 berth pocket

### Survey Coverage (Maintained Depth = -9.5m CD)



This notice is a direction of the Harbour Master pursuant to section 232 of the *Marine Safety Act 2010* (Vic)  
The requirements of section 232(2) have been taken into account.

Victorian Notices to Mariners can be downloaded from the Victorian Ports Corporation (Melbourne) website  
[www.vicports.vic.gov.au](http://www.vicports.vic.gov.au)