

Australia – Victoria

No. 357 (T) - 2022

PORT OF MELBOURNE

YARRAVILLE 5 AND 6 BERTHS – REDUCTION IN MAINTAINED DEPTHS

Date: 18 October 2022

Refers: N/A

Details: Mariners are advised that a reduction in maintained depth has been declared in the berth pockets of Yarraville 5 and 6.

3.15 Berth information, berthing and unberthing - Table 3(j) – Harbour Master’s Directions – Melbourne Edition 13 – amended as follows:

Berth		Maintained depth (m)	Ship’s limits at berth (m)		Wharf height (m) above Chart Datum	General remarks
Name	Length (m)	Berth	Max. draught	Max. length		
Yarraville 5	148	8.5	7.9	180	3.5	Bulk sugar/gypsum Beam >28.6 m: vessel to move clear of Maribyrnong River channel for all movements to/from Maribyrnong No. 1 berth (vessel must shift as directed by Melbourne VTS) <i>Maximum 16 m overlap allowed at each end</i>
Yarraville 6	235	9.5	8.9	160	3.4	Maximum displacement:30,000 t Maximum beam:26 m Only chemical tankers

For further information, please contact Melbourne VTS on (03) 9644 9700 or on VHF Channel 12.

**Charts &
Publications
affected**

Harbour Master's Directions - Melbourne Edition 13, September 2022
ENC AU5MEL01

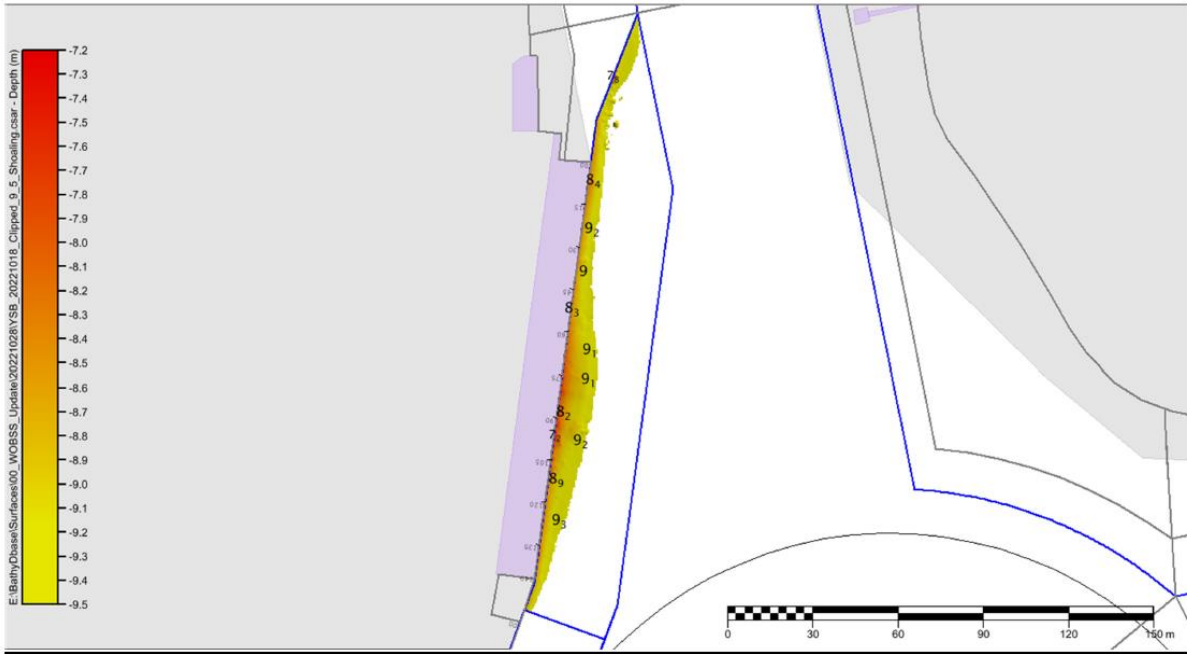
**Further
notice:**

Further notice will be issued.

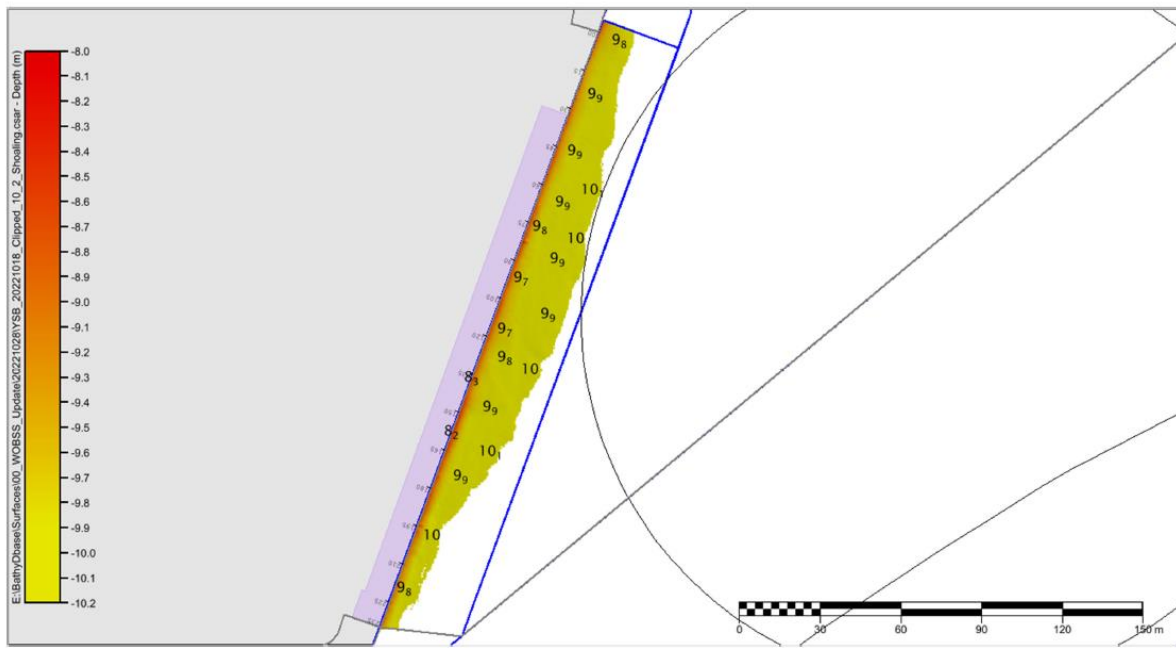


**Warwick Laing
Harbour Master**

Survey image with soundings of Yarraville 5 Berth



Survey image with soundings of Yarraville 6 Berth



This notice is a direction of the Harbour Master pursuant to section 232 of the *Marine Safety Act 2010 (Vic)*
The requirements of section 232(2) have been taken into account.

Victorian Notices to Mariners can be downloaded from the Victorian Ports Corporation (Melbourne) website
www.vicports.vic.gov.au