

## Australia – Victoria

No. 354 (T) - 2022

### PORT OF MELBOURNE

#### MARIBYRNONG NO. 1 BERTH – REDUCTION IN MAINTAINED DEPTH

**Date:** 18 October 2022

**Refers:** N/A

**Details:** Mariners are advised that a reduction in maintained depth has been declared in the berth pocket of Maribyrnong No. 1.

3.15 Berth information, berthing and unberthing - Table 3(j) – Harbour Master’s Directions – Melbourne Edition 13 – amended as follows:

Berth		Maintained depth (m)	Ship’s limits at berth (m)		Wharf height (m) above Chart Datum	General remarks
Name	Length (m)	Berth	Max. draught	Max. length		
Maribyrnong No.1	-	8.6	8.0	180	2.9	Bulk Liquid Terminal Head out Only Vessels with beam >25m require permit Maximum displacement 40,000t.

For further information, please contact Melbourne VTS on (03) 9644 9700 or on VHF Channel 12.

**Charts & Publications affected** Harbour Master’s Directions - Melbourne Edition 13, September 2022  
ENC AU5MEL01

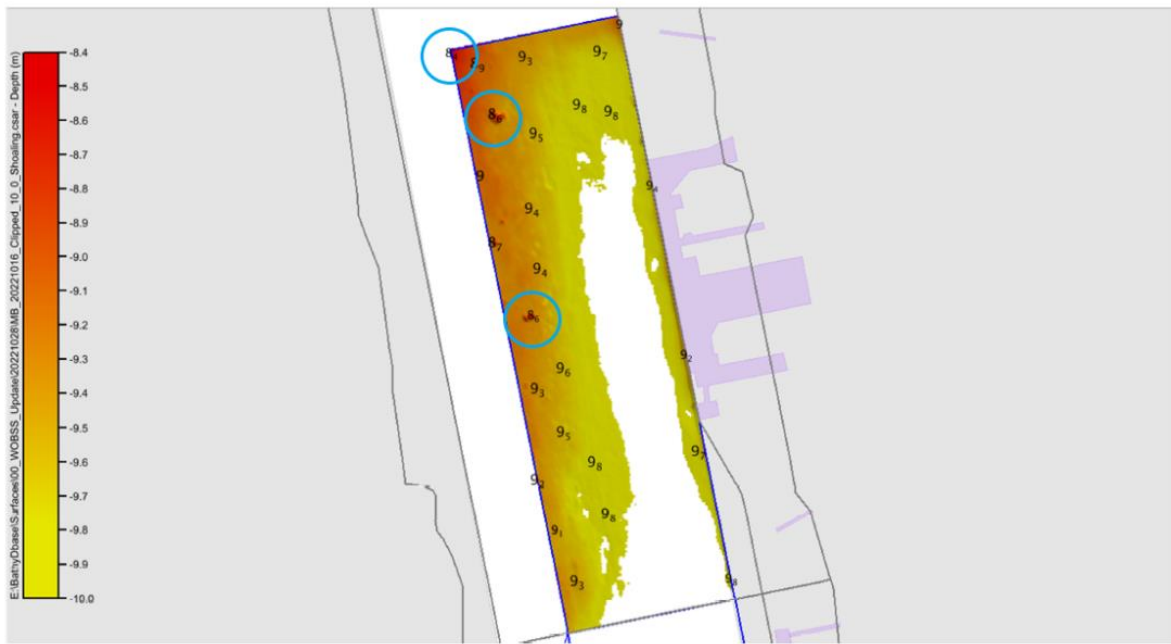
**Further notice:**

Further notice will be issued.



**Warwick Laing  
Harbour Master**

**Survey image with soundings of Maribyrnong No. 1 berth**



This notice is a direction of the Harbour Master pursuant to section 232 of the *Marine Safety Act 2010* (Vic)  
The requirements of section 232(2) have been taken into account.

Victorian Notices to Mariners can be downloaded from the Victorian Ports Corporation (Melbourne) website  
[www.vicports.vic.gov.au](http://www.vicports.vic.gov.au)