

**Australia – Victoria**

**No. – 324 (T) - 2022**

**PORT OF MELBOURNE**

**PORT PHILLIP - SOUTH CHANNEL – SHOAL AREAS -**

**TEMPORARY VIRTUAL AIDS TO NAVIGATION ESTABLISHED AND OPERATIONAL  
INSTRUCTION FOR SOUTH CHANNEL**

**Date:** 5 October 2022

**Refers:** **NtM 298 (T) 2021** - South Channel - Temporary Virtual Aid to Navigation TB6 & TB7 established and is hereby cancelled.  
**NtM 309 (T) 2022** - South Channel - Temporary Virtual Aid to Navigation TB3 and TB4 and is hereby cancelled.  
**NtM 320 (T) 2022** - South Channel - Temporary Virtual Aid to Navigation TB5 and is hereby cancelled.

**Details:** Mariners are advised that recent surveys in the South Channel have identified areas of shoaling which are marked by virtual buoys in the following locations:

Identification Message	Lat	Long	Shoal depth
<b>TB 3</b>	38° 17.635'S	144° 41.144'E	15.2m
<b>TB 4</b>	38° 17.751'S	144° 41.652'E	15.2m
<b>TB 5</b>	38° 18.047'S	144° 43.255'E	15.3m
<b>TB 6</b>	38° 18.202'S	144° 44.377'E	15.4m
<b>TB 7</b>	38° 19.067'S	144° 48.633'E	15.0m
<b>TB 8</b>	38° 19.741'S	144° 54.077'E	14.9m

Vessels with a draught of **13.50m and greater** are advised to refer to the **Operational Instruction (OI) No. 03 / 2022** (attached) when navigating in the South Channel.

A copy of this NtM and OI can be downloaded from Ports Victoria's [website](#).

**Mariners on deep draught vessels are advised to navigate with caution in the vicinity of the virtual buoys.**

For further information, please contact Melbourne VTS on VHF Channel 12 or 9644 9700.

**Charts &  
Publications  
affected**

AUS 143, AUS 144  
(ENC Cell Number) – AU5RIP01, AU439144

**Further notice:** Further notice will be issued.



**Warwick Laing**  
**Harbour Master**

This notice is a direction of the Harbour Master pursuant to section 232 of the *Marine Safety Act 2010* (Vic)  
The requirements of section 232(2) have been taken into account.

---

Victorian Notices to Mariners can be downloaded from the Victorian Ports Corporation (Melbourne) website  
[www.vicports.vic.gov.au](http://www.vicports.vic.gov.au)

**Operational Instruction No. 03 / 2022****REQUIREMENTS FOR DEEP DRAUGHT VESSELS TRANSITING THE SOUTH CHANNEL**

**Date:** 5 October 2022

Recent surveys have identified shoaling in the South Channel. As per NtM 324 (T) - 2022, temporary virtual aids to navigation have been established to mark the extent of the shoaling.

This Operational Instruction applies to vessels transiting the South Channel with a draught of **13.5m and greater**.

**Inbound deep draught vessels are to pass:**

- North of TB 3 and TB 4
- South of TB 5
- South of TB 6
- South of TB 7
- South of TB 8

Vessels with a draught less than 13.5m, when overtaking or passing must plan their passage accordingly so as not to compromise the safe navigation of an inbound vessel with a draught of 13.5m and greater and must communicate with the other vessel and agree on passing/overtaking arrangements on VHF Channel 12. Lonsdale VTS are to acknowledge the passing/overtaking arrangements on VHF Channel 12.

Coastal vessels, as mentioned in Harbour Master's Directions for the Port of Melbourne - 3.13.1 are to navigate with particular caution and must communicate with an inbound vessel with a draught of 13.5m and greater and agree on passing/overtaking arrangements on VHF Channel 12. Lonsdale VTS are to acknowledge the passing/overtaking arrangements on VHF Channel 12.

**Outbound deep draught vessels are to pass:**

- South of TB 8
- South of TB 7
- South of TB 6
- North of TB 5
- North of TB 3 and TB 4

Outbound vessels with a draught of **13.5m and greater** will have a **one-way passage** for the entire length of the South Channel from Beacons 24/25 to the Fairway through Port Phillip Heads.

This Operational Instruction is to be read in conjunction with NtM 324 (T) 2022.

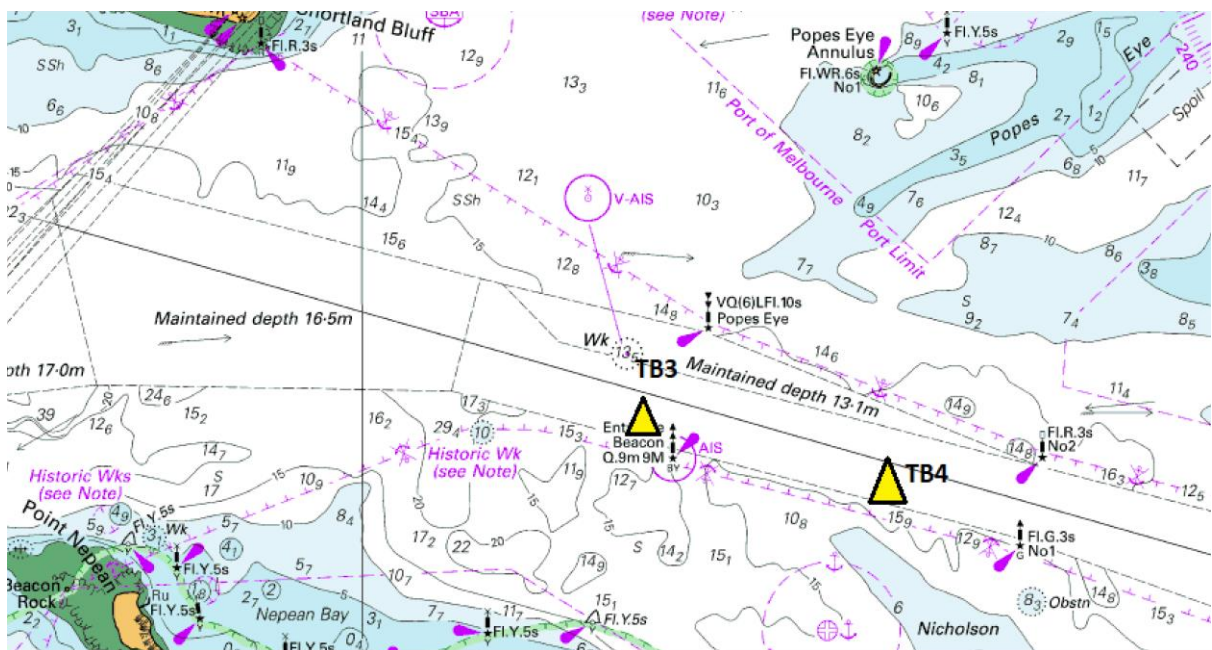
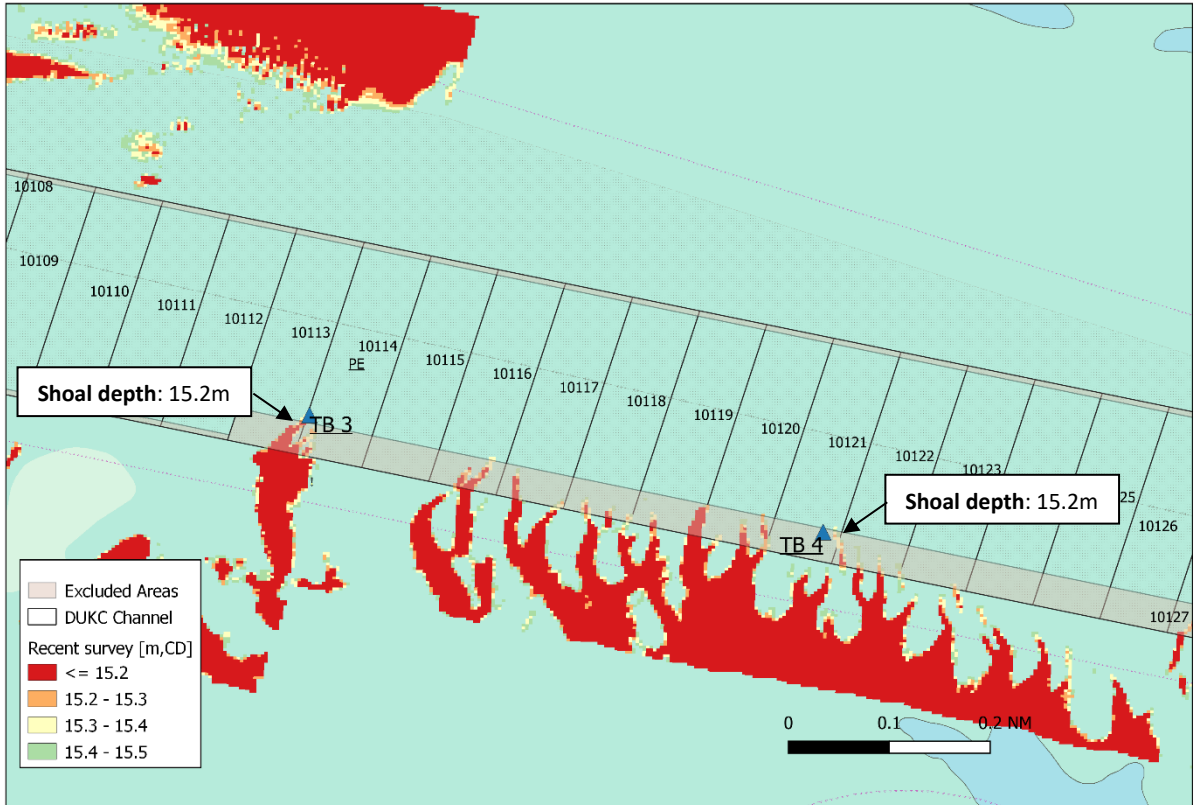
*This Operational Instruction is a Direction made under Section 232 (1C) of the Marine Safety Act 2010 (Vic).*



**Warwick Laing**  
**Harbour Master**

## Position of TB 3 and TB4 in South Channel

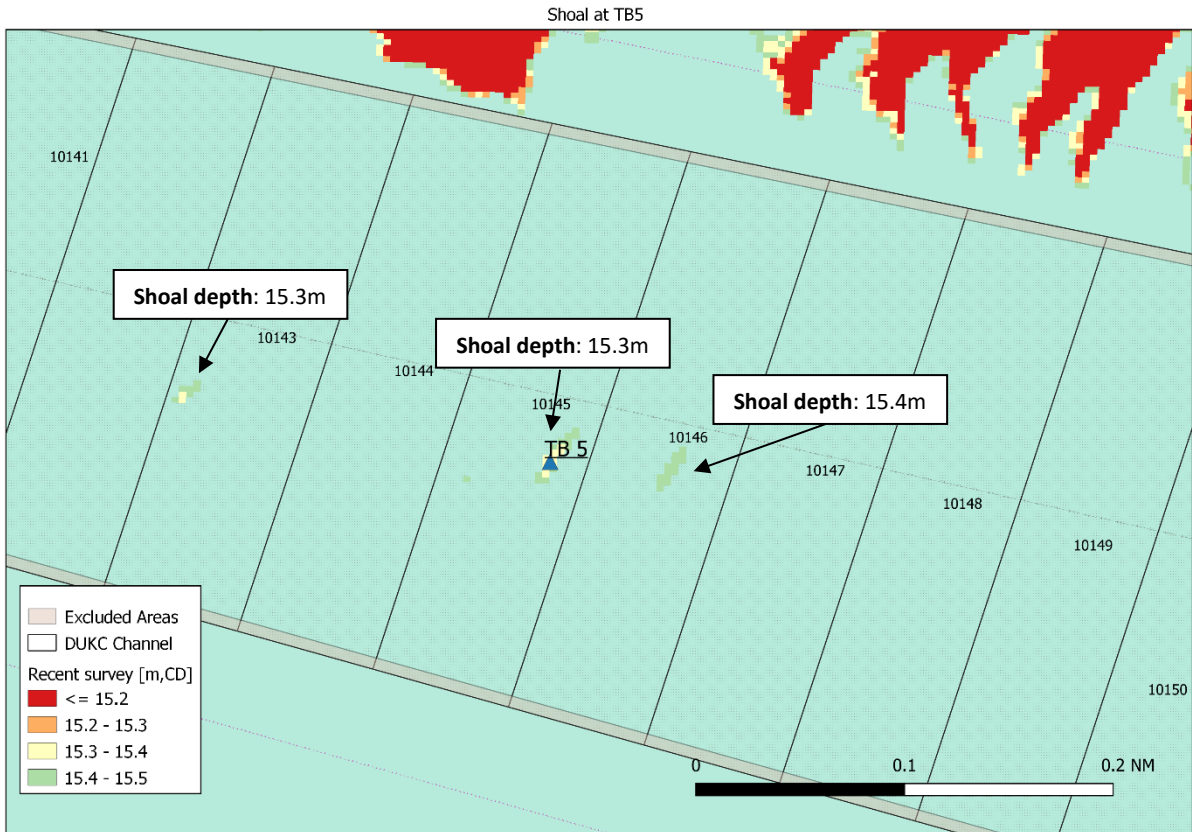
Shoal at TB3/TB4



This notice is a direction of the Harbour Master pursuant to section 232 of the *Marine Safety Act 2010* (Vic)  
The requirements of section 232(2) have been taken into account.

Victorian Notices to Mariners can be downloaded from the Victorian Ports Corporation (Melbourne) website  
[www.vicports.vic.gov.au](http://www.vicports.vic.gov.au)

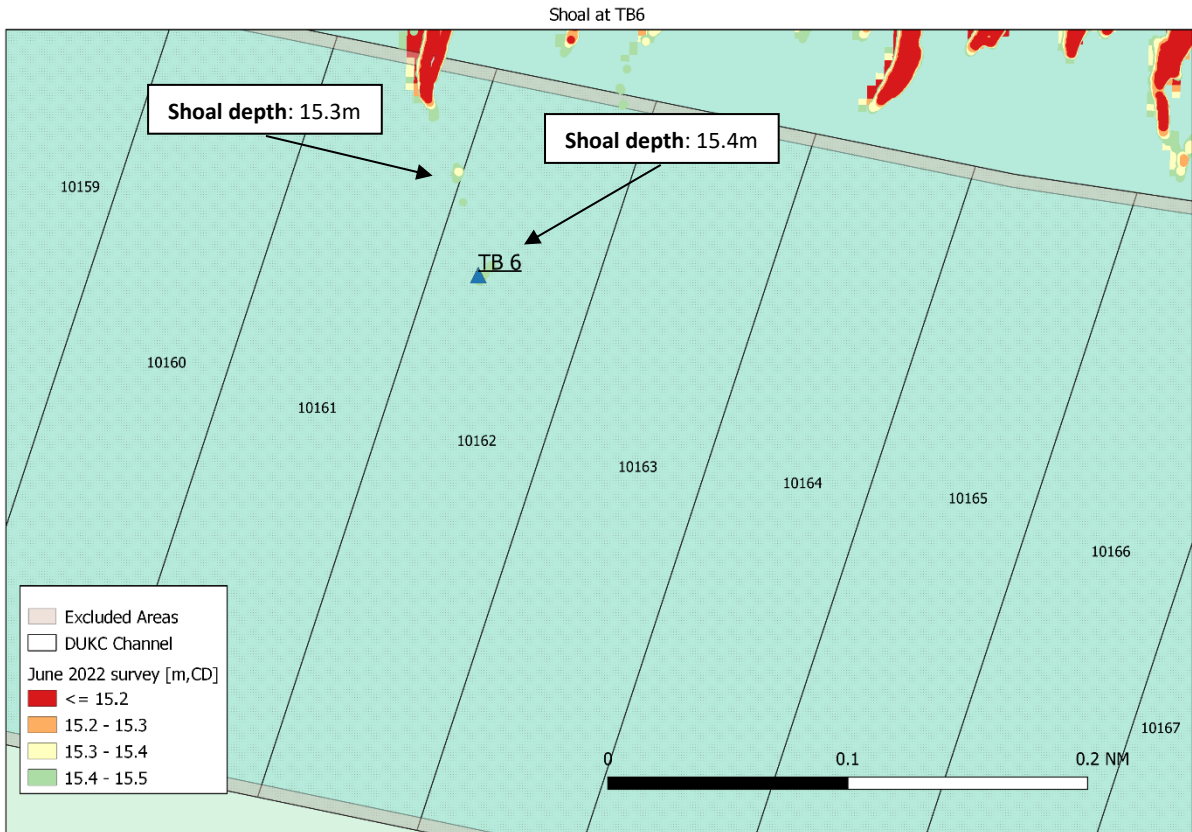
## Position of TB 5 in South Channel



This notice is a direction of the Harbour Master pursuant to section 232 of the *Marine Safety Act 2010* (Vic)  
The requirements of section 232(2) have been taken into account.

Victorian Notices to Mariners can be downloaded from the Victorian Ports Corporation (Melbourne) website  
[www.vicports.vic.gov.au](http://www.vicports.vic.gov.au)

## Position of TB 6 in South Channel

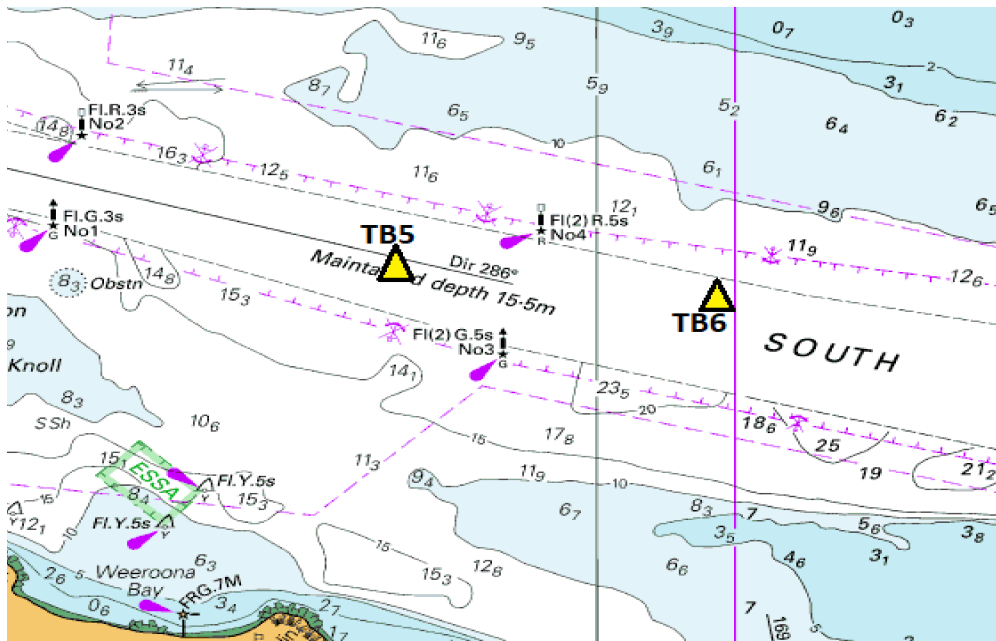
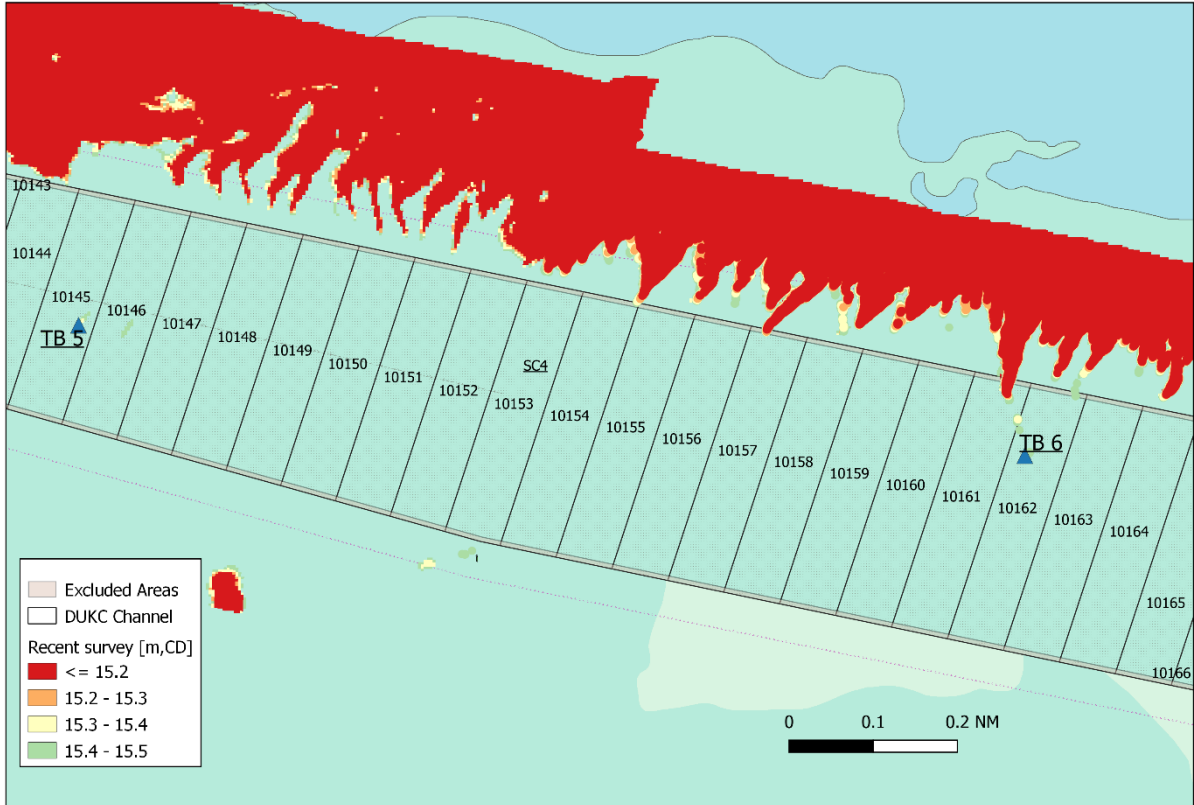


This notice is a direction of the Harbour Master pursuant to section 232 of the *Marine Safety Act 2010* (Vic)  
The requirements of section 232(2) have been taken into account.

Victorian Notices to Mariners can be downloaded from the Victorian Ports Corporation (Melbourne) website  
[www.vicports.vic.gov.au](http://www.vicports.vic.gov.au)

## Position of TB 5 and TB 6 in South Channel

Shoal at TB5/TB6

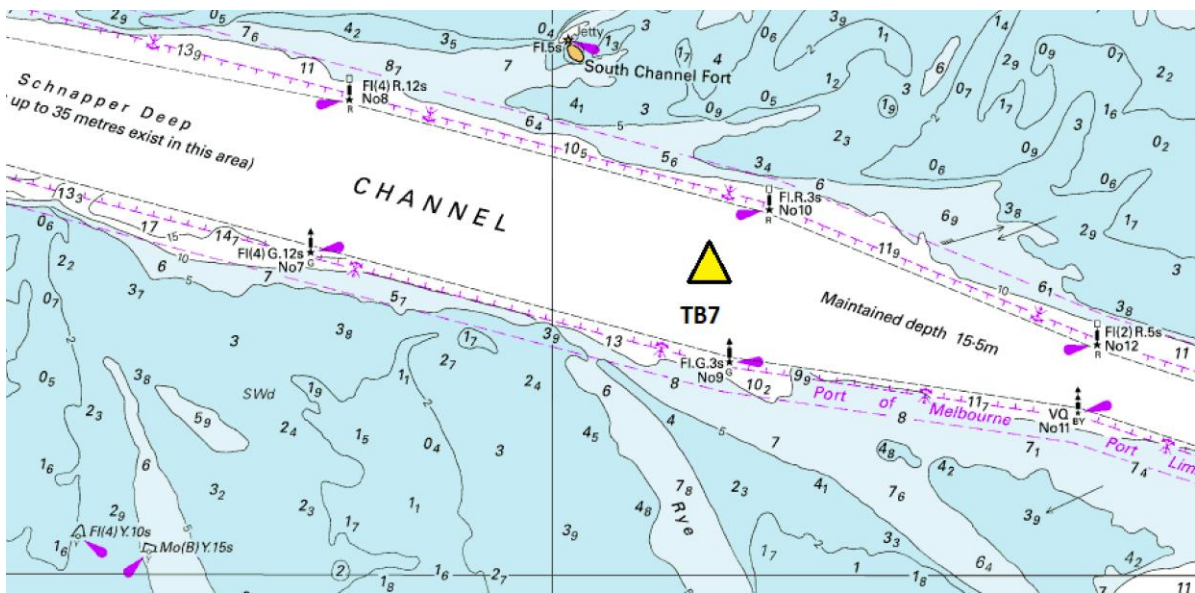
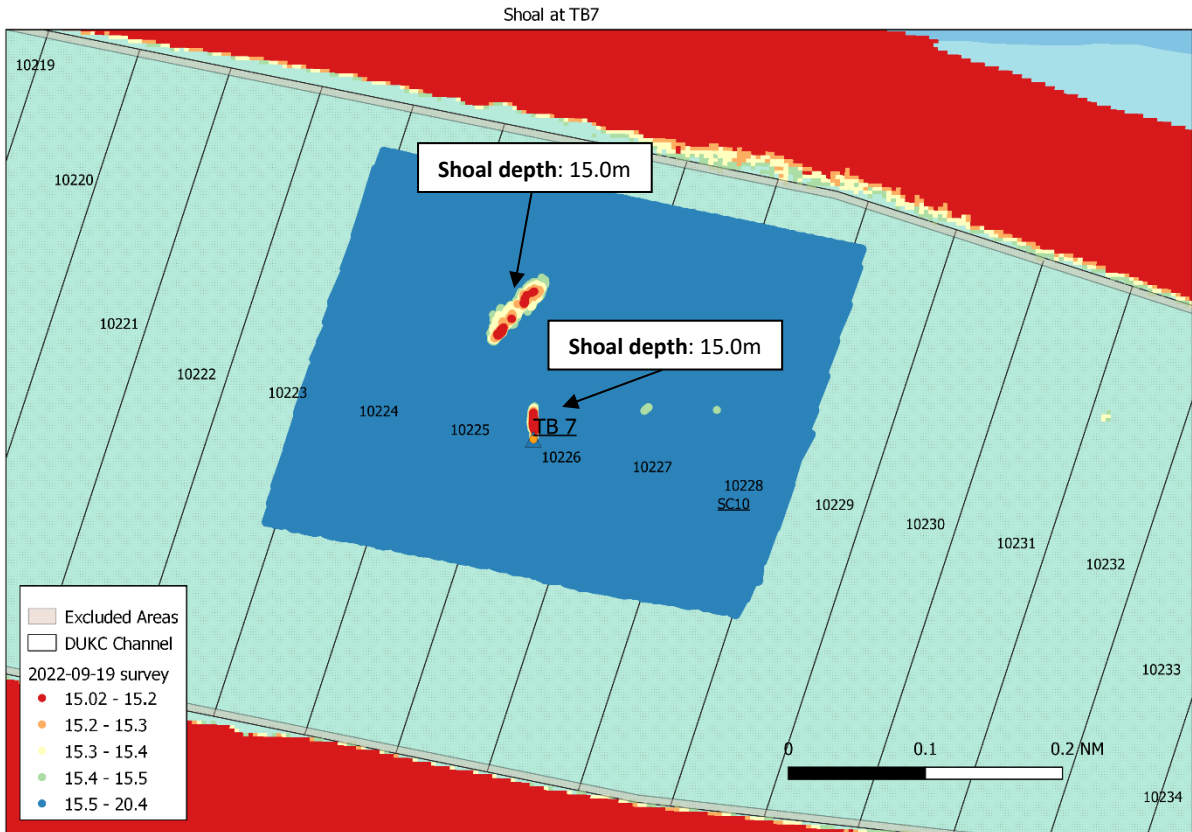


This notice is a direction of the Harbour Master pursuant to section 232 of the *Marine Safety Act 2010* (Vic). The requirements of section 232(2) have been taken into account.

Victorian Notices to Mariners can be downloaded from the Victorian Ports Corporation (Melbourne) website [www.vicports.vic.gov.au](http://www.vicports.vic.gov.au)



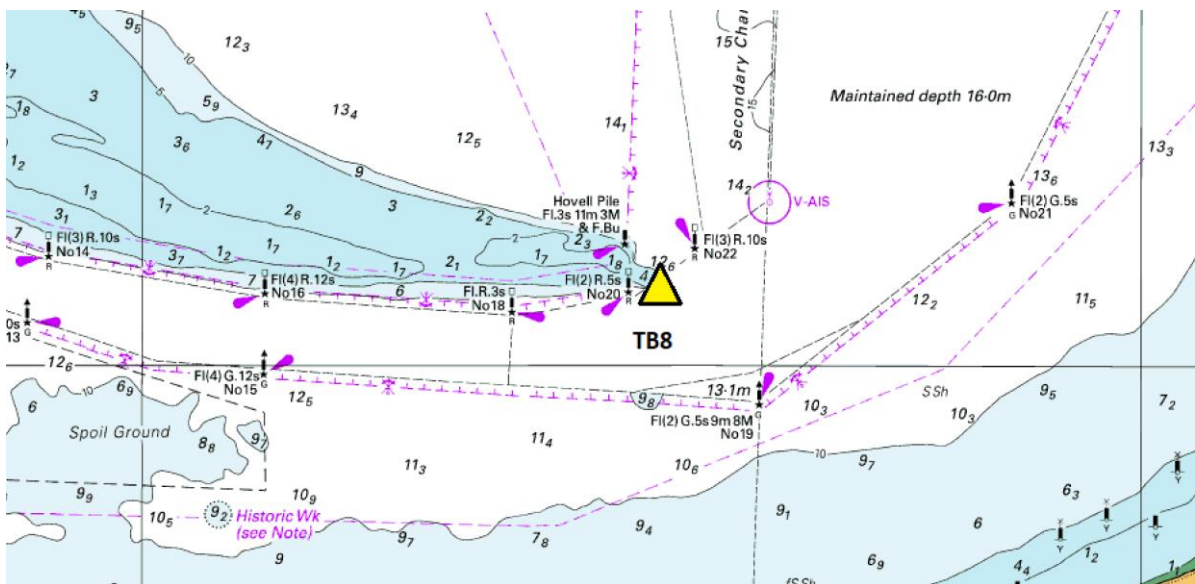
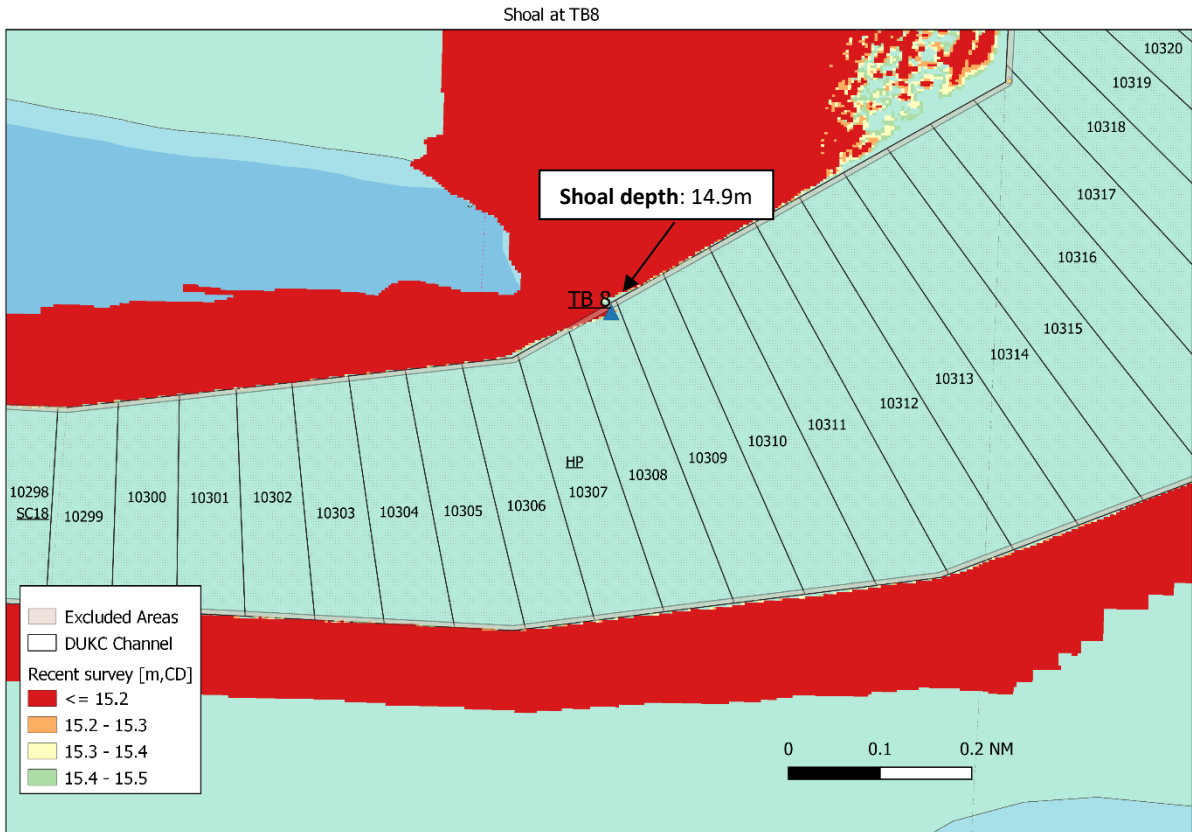
## Position of TB 7 in South Channel



This notice is a direction of the Harbour Master pursuant to section 232 of the *Marine Safety Act 2010* (Vic)  
The requirements of section 232(2) have been taken into account.

Victorian Notices to Mariners can be downloaded from the Victorian Ports Corporation (Melbourne) website  
[www.vicports.vic.gov.au](http://www.vicports.vic.gov.au)

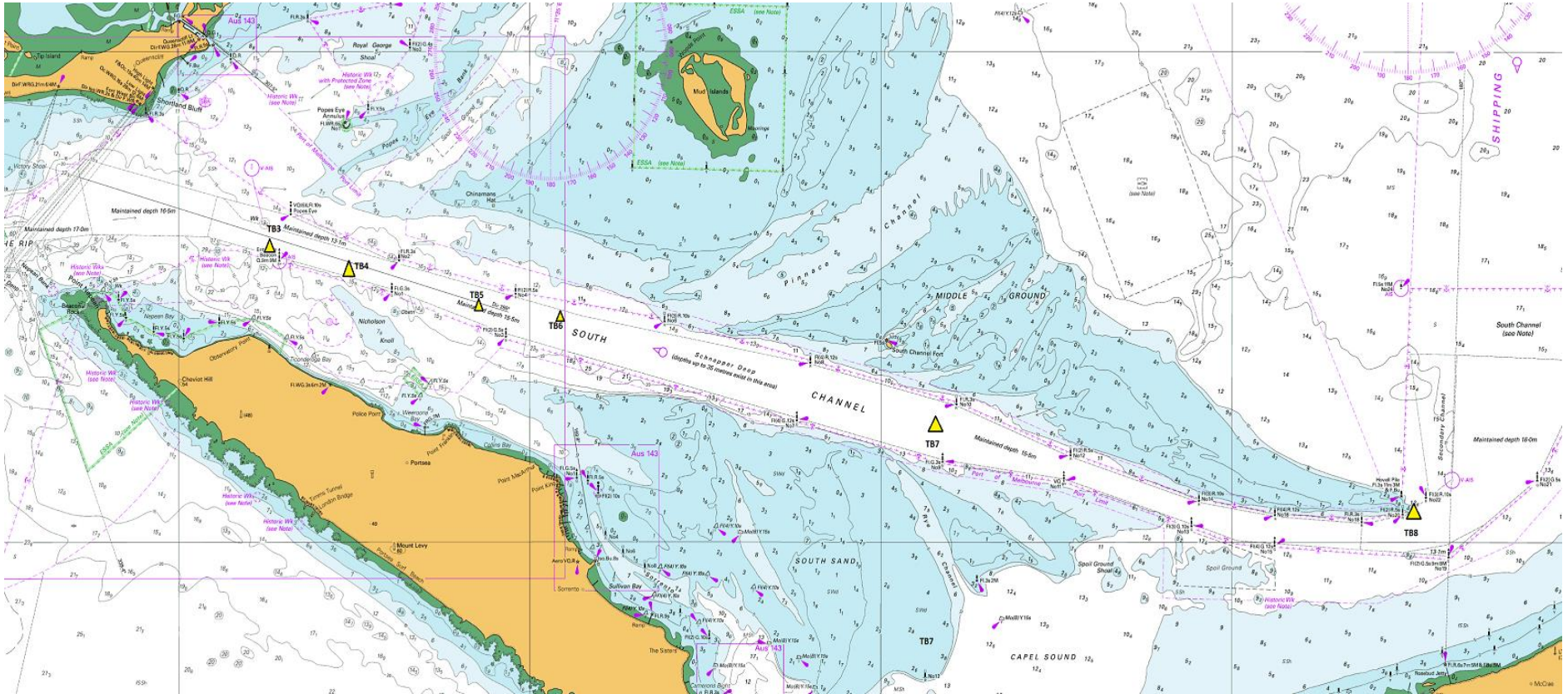
## Position of TB 8 in South Channel



This notice is a direction of the Harbour Master pursuant to section 232 of the *Marine Safety Act 2010* (Vic)  
 The requirements of section 232(2) have been taken into account.

Victorian Notices to Mariners can be downloaded from the Victorian Ports Corporation (Melbourne) website  
[www.vicports.vic.gov.au](http://www.vicports.vic.gov.au)

## Overview of virtual aids to navigation in South Channel



This notice is a direction of the Harbour Master pursuant to section 232 of the *Marine Safety Act 2010* (Vic). The requirements of section 232(2) have been taken into account.

Ports Victoria Notices to Mariners can be downloaded from the website, [www.vicports.vic.gov.au](http://www.vicports.vic.gov.au)