

Australia – Victoria

No. 309 (T) - 2022

PORT OF MELBOURNE

PORT PHILLIP - SOUTH CHANNEL – SHOAL AREA –
TEMPORARY VIRTUAL AIDS TO NAVIGATION LOCATIONS TB3 AND TB4

Date: 15 September 2022

Refers: NtM 122 (T) – 2021 is hereby cancelled
NtM 265 (T) – 2022 is hereby cancelled

Details: Mariners are advised that surveys in the South Channel have identified areas of shoaling which are marked by virtual buoys in the following locations:

Identification message –**TB3** and **TB4**

Established in position - **TB3:** 38° 17 .721S, 144° 41.544E
TB4: 38° 18 .015S, 144° 43.079E

The virtual buoys **TB3** and **TB4** have been established to mark the current shoaling. Deep draught vessels with a draught greater than 13.5m are advised to pass north of **TB3** and either to the north or south of **TB4**.

Mariners on deep draught vessels are advised to navigate with caution in the vicinity of the virtual buoys.

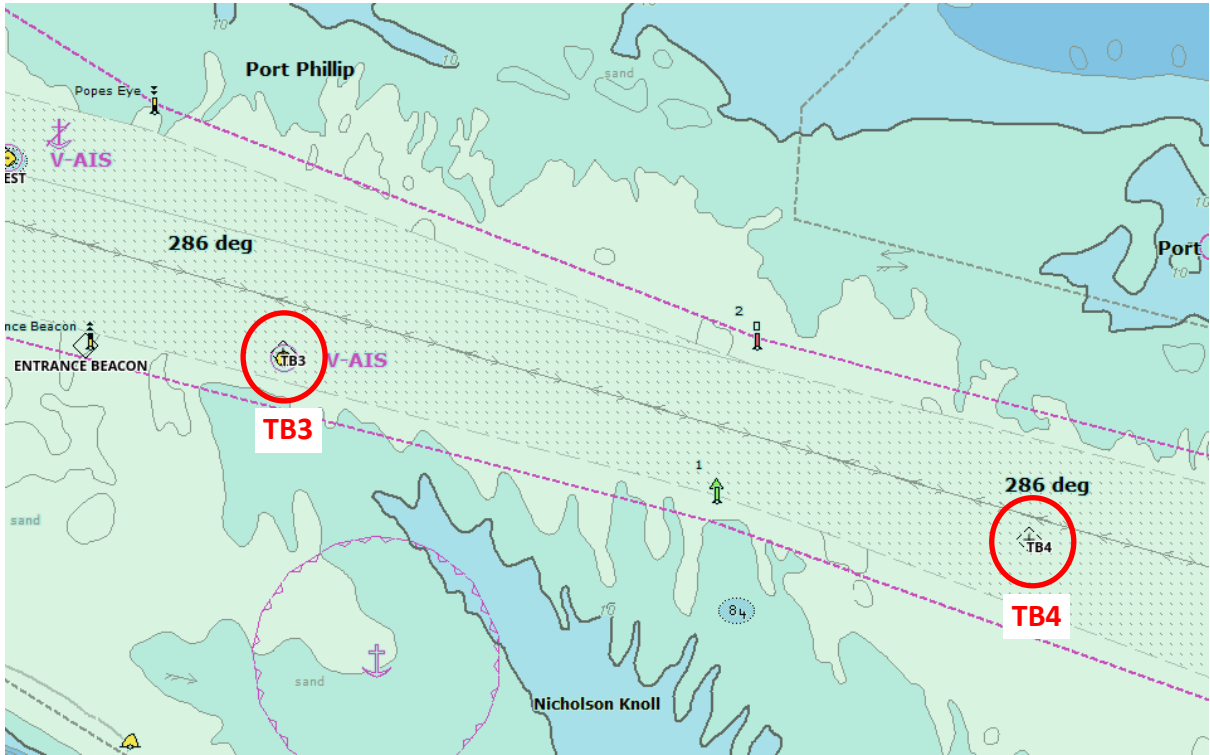
For further information, please contact Melbourne Vessel Traffic Service on VHF Channel 12 or 9644 9700.

Charts & Publications affected AUS 143, AUS 144
(ENC Cell Number) – AU5RIP01, AU439144

Further notice: A further notice will be issued



Warwick Laing
Harbour Master



TB3 and TB4 locations in South Channel

This notice is a direction of the Harbour Master pursuant to section 232 of the *Marine Safety Act 2010* (Vic)
The requirements of section 232(2) have been taken into account.

Victorian Notices to Mariners can be downloaded from the Victorian Ports Corporation (Melbourne) website
www.vicports.vic.gov.au