

Australia – Victoria**No. 277 (T) - 2022****PORT MELBOURNE****OUTER WEST STATION PIER WHARF PILE DRIVING WORKS****Date:** 19 August 2022**Refers:** NtM 172 (T) – 2022

Details: Port users are advised that pile driving works will take place on the Western side of Station Pier from 22 Aug 2022 until approximately 02 September 2022.

The pile driving works will include diving activities and will be conducted Monday to Saturday from 0700 hrs to 1800 hrs. The following vessels will be involved in the works:

- MV Oversea
- MV Nuwi
- MV PB162

Vessels will display International Code flag “ALPHA” during diving operations.

For more information contact Melbourne VTS on 9644 9700 or VHF Channel 12.

Mariners are instructed to reduce vessel speed, so as to create no vessel wash and are advised to navigate with additional caution in the vicinity of the works area.

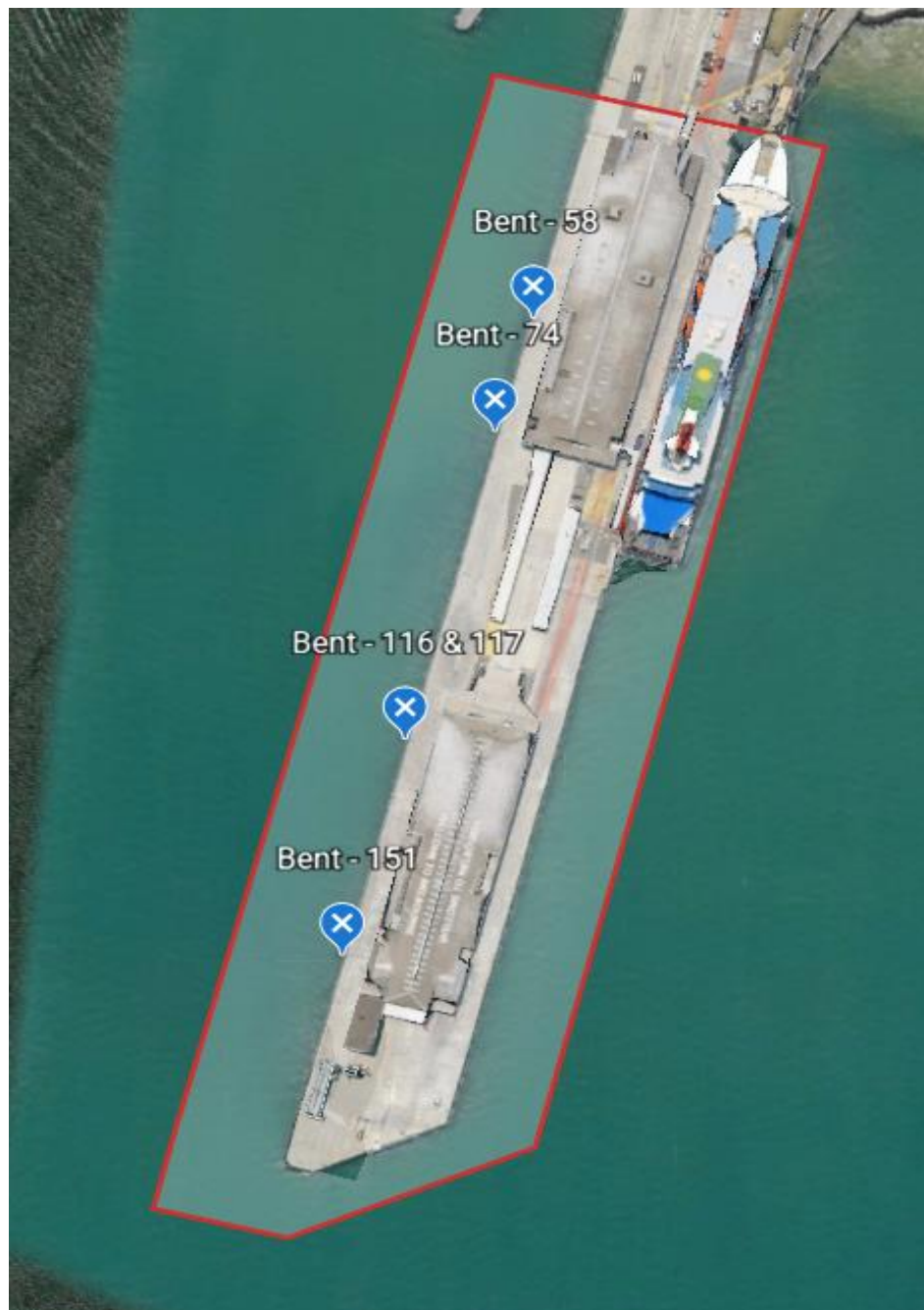
Charts & Publications affected (ENC) AU5MEL01

Further notice: Further Notice will be issued



**Warwick Laing
Harbour Master**

Station Pier – Pile driving work locations



This notice is a direction of the Harbour Master pursuant to section 232 of the *Marine Safety Act 2010* (Vic)
The requirements of section 232(2) have been taken into account.

Victorian Notices to Mariners can be downloaded from the Victorian Ports Corporation (Melbourne) website
www.vicports.vic.gov.au