

# NOTICE TO MARINERS

GIPPSLAND PORTS



The following navigation warning is published for general information

**AUSTRALIA - VICTORIA**

**No.291(T) OF 2022**

**PORT OF GIPPSLAND LAKES**

**LAKES ENTRANCE BAR - BAR CONDITION ADVICE**

**LEADING LINE CHANGED TO LINE 5**

**TSHD TOMMY NORTON DREDGING OPERATIONS**

**DATE:** 29<sup>th</sup> August 2022

**PREVIOUS NOTICE:** Notice to Mariners No.244(T) of 2022 is referred and cancelled

**DETAILS:** Mariners are advised that following the recent bathymetric survey carried out on 26<sup>th</sup> August 2022 the leading "**lights in line**" have been aligned to **Line 5** on a bearing of 352°(T) to the Flagstaff.

Least depths through the **Line 5** transit are 4.9m LAT. Please see the latest bathymetric survey indicating the line 5 transit attached to this Notice to Mariners.

"**Tommy Norton**" will be concentrating dredging operations in the areas of the "**Green Light**" transit lines and the design channel.

Mariners are directed to stay clear of the "**Tommy Norton**" during dredging operations and to request approval to pass from the Master on VHF Ch16.

Please take note of the attached bathymetric survey which indicates the Leading **Line 5** and depths (LAT) through that transit.

For the purpose of the bathymetry LAT (Lowest Astronomical Tide) is "zero tide". True depths are calculated by adding the height of tide at Lakes Entrance for any given time.

Mariners are advised to take extra precaution when crossing the Bar at Lakes Entrance, noting that the best time to cross the bar is during daylight hours at slack water in the entrance channel and swells less than 1.5 metres.

# NOTICE TO MARINERS

## GIPPSLAND PORTS



Near real time wave, tide and weather conditions are available on the Gippsland Ports Website at:

[Lakes Entrance Waves Tides and Weather - Gippsland Ports](#)

For further information please call Gippsland Ports Harbour Master on 0427 610 025

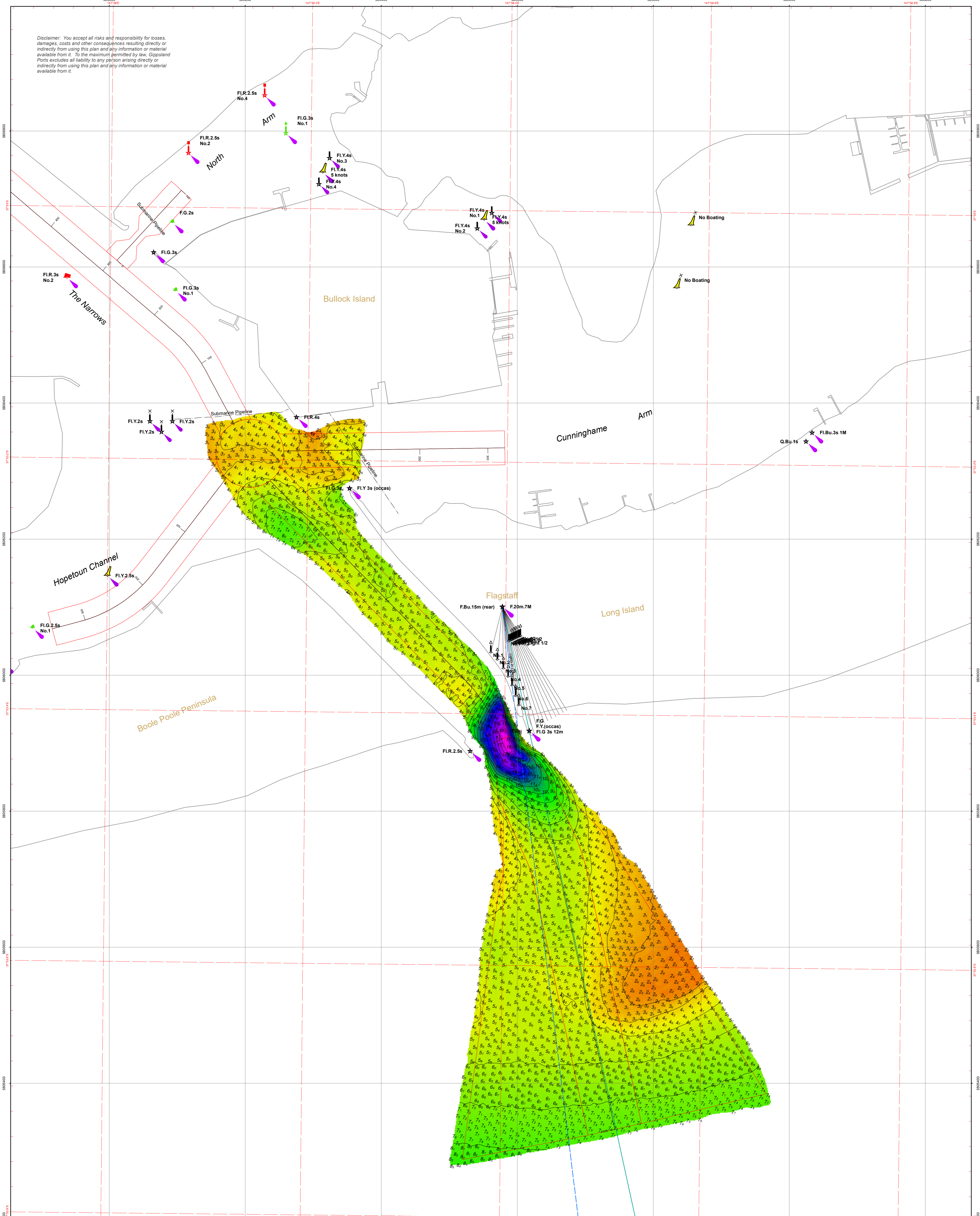
**CHARTS**                    ENC AUSLEN01  
**AFFECTED:**

**PUBLICATIONS**        Gippsland Ports Waterways online website available at;  
**AFFECTED:**            <https://www.gippslandports.vic.gov.au/boating/waterways-online/>

**FURTHER**                A further notice will be issued.  
**NOTICE:**

**CAPT. BEVIS HAYWARD**  
**HARBOUR MASTER**  
**GIPPSLAND PORTS**

Disclaimer: You accept all risks and responsibility for losses, damages, costs and other consequences resulting directly or indirectly from using this plan and any information or material available from it. To the maximum permitted by law, Gippsland Ports excludes all liability to any person arising directly or indirectly from using this plan and any information or material available from it.



Amendment List			Equipment	Reliability
Date	Rev.	Description	R2 Sonic 2022 multibeam sonar; RTK enabled Applanix POS MV 320 GNSS position and orientation system and CooEcho 200kHz 9 degree beam survey system with Trimble RTK-GNSS	Depth Accuracy - ZOC A1 Position Accuracy - ZOC A1 Full bottom search not completed
				Previous Plan Numbers
				6596

Datum Diagram	
AHD (m)	Chart Datum (m)
10.610	11.367
0.000	0.757
-0.757	-0.000

**Scale 1:2,500 @ A1**

**Notations** Datum for soundings is Chart Datum, which is 0.757 metres below A.H.D. Co-ordinate system is GDA2020 (Red) and MGA2020, Zone 55 (Grey). Horizontal and Vertical positioning derived using RTK-GNSS. Countours are at 1m intervals. All values are in metres. Negative depths indicate drying heights.

Surveyed by	M.Spykers & P.Hahnemann
Date of Survey	23rd, 25th, 26th August 2022
Compiled by	P.Hahnemann (BAppSc Surveying)
Checked by	M.Spykers (BAppSc Surveying)
Date Checked	29th August 2022



**Gippsland Lakes**

**Lakes Entrance**  
**Vicinity of The Entrance**

<b>6609</b>	Sheet Size
Sheet 1 of 1	<b>A1</b>