

**Australia – Victoria**

**No. 265(T) - 2022**

**PORT MELBOURNE**

**PORT PHILLIP - SOUTH CHANNEL – SHOAL AREA –  
TEMPORARY VIRTUAL AID TO NAVIGATION TB4 RELOCATED**

**Date:** 01 August 2022

**Refers:** NtM 122 (T) – 2021 is hereby amended

**Details:** Mariners are advised that recent surveys in the South Channel have identified areas of shoaling which is marked by a virtual buoy in the following location

Identification Message –TB4

Established in position – TB4 -38° 18.0150S, 144° 43.0790E

The virtual buoy TB4 has been relocated further west to mark the current shoaling. Deep draught vessels with a draught greater than 13.5m are advised to pass to the South or to the North of TB4

**Mariners are advised to navigate with caution in the vicinity of the virtual buoy.**

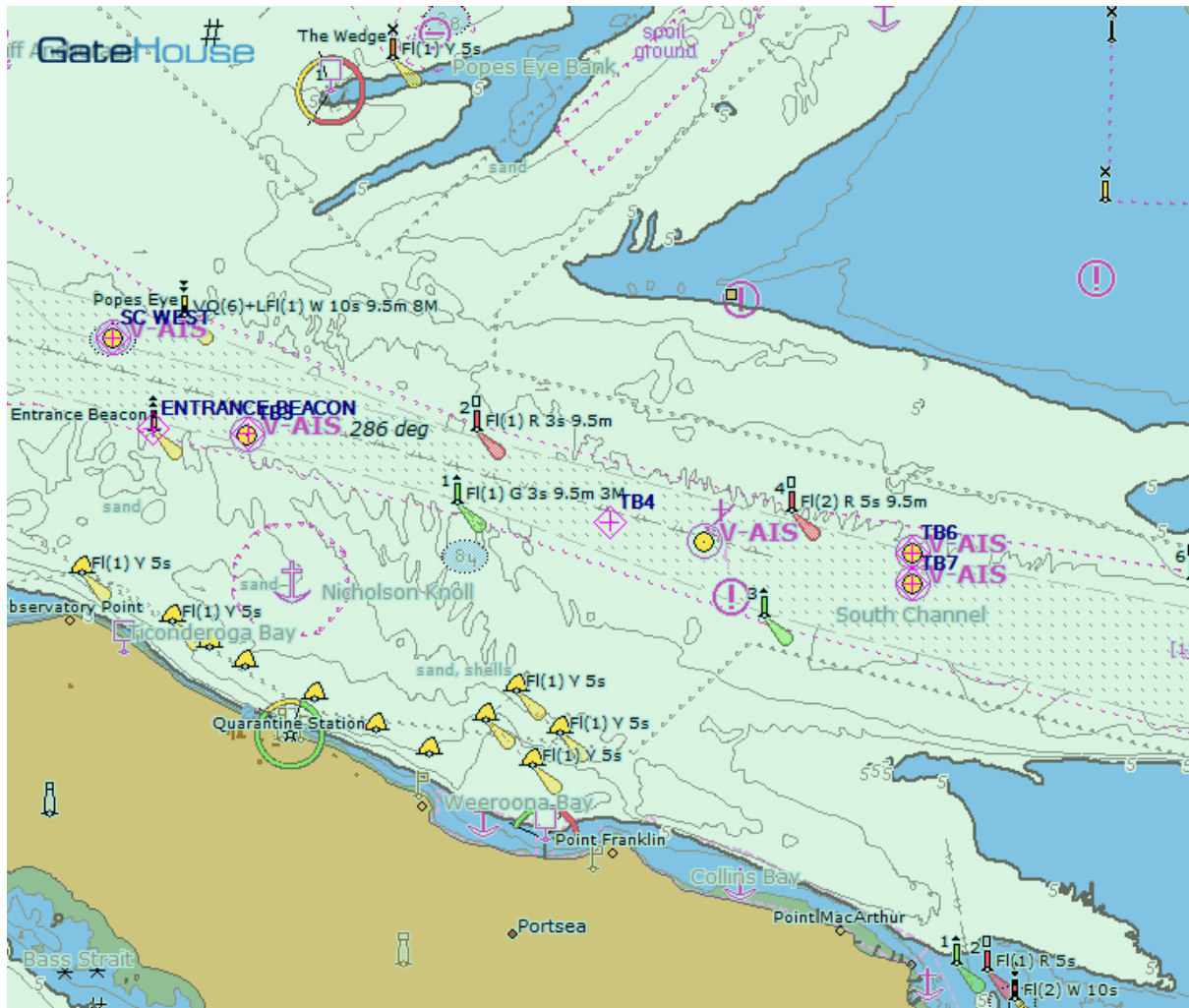
For further information, please contact Melbourne Vessel Traffic Service on VHF Channel 12 or 9644 9700.

**Charts & Publications affected** AUS 143, AUS 144, AUS 158  
(ENC Cell Number) - AU 5144, AU 438144, AU 439144 respectively

**Further notice:** A further Notice will be issued



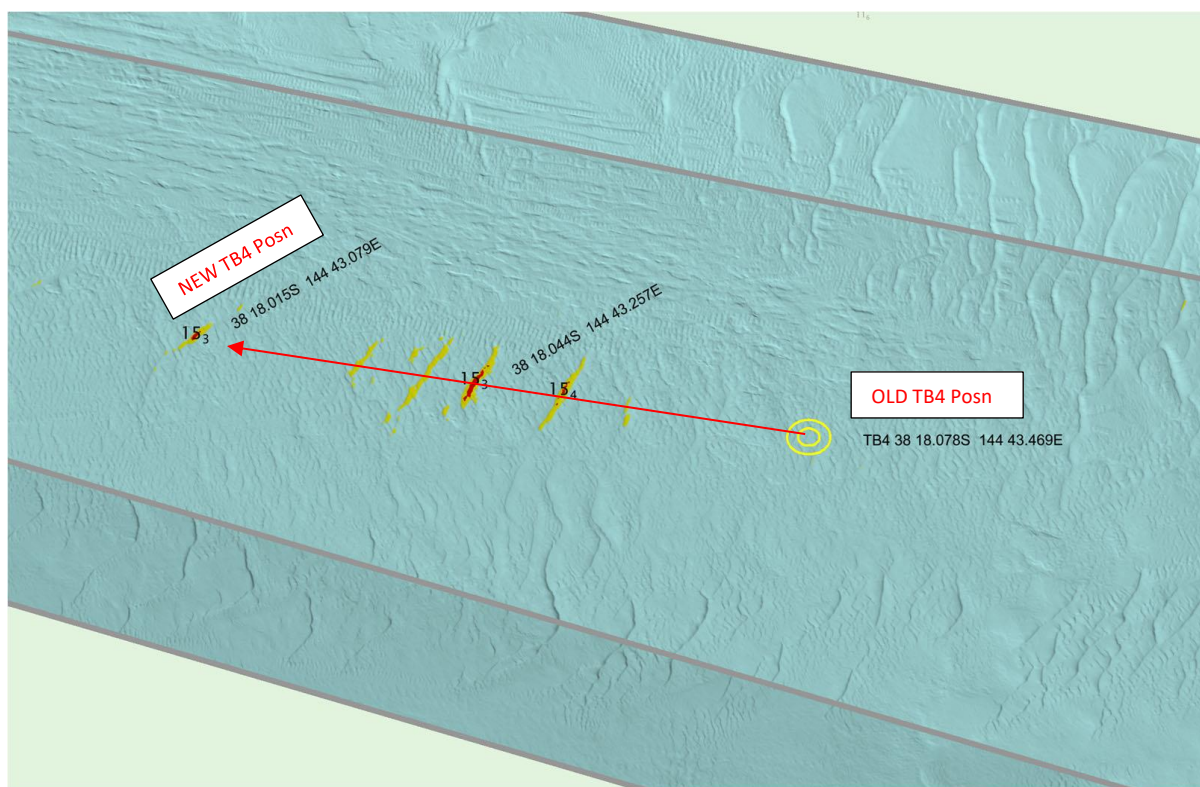
**Warwick Laing  
Harbour Master**



TB4 relocated

This notice is a direction of the Harbour Master pursuant to section 232 of the *Marine Safety Act 2010* (Vic)  
The requirements of section 232(2) have been taken into account.

Victorian Notices to Mariners can be downloaded from the Victorian Ports Corporation (Melbourne) website  
[www.vicports.vic.gov.au](http://www.vicports.vic.gov.au)



This notice is a direction of the Harbour Master pursuant to section 232 of the *Marine Safety Act 2010* (Vic)  
The requirements of section 232(2) have been taken into account.

Victorian Notices to Mariners can be downloaded from the Victorian Ports Corporation (Melbourne) website  
[www.vicports.vic.gov.au](http://www.vicports.vic.gov.au)