

## Australia – Victoria

No. – 207 (T) - 2022

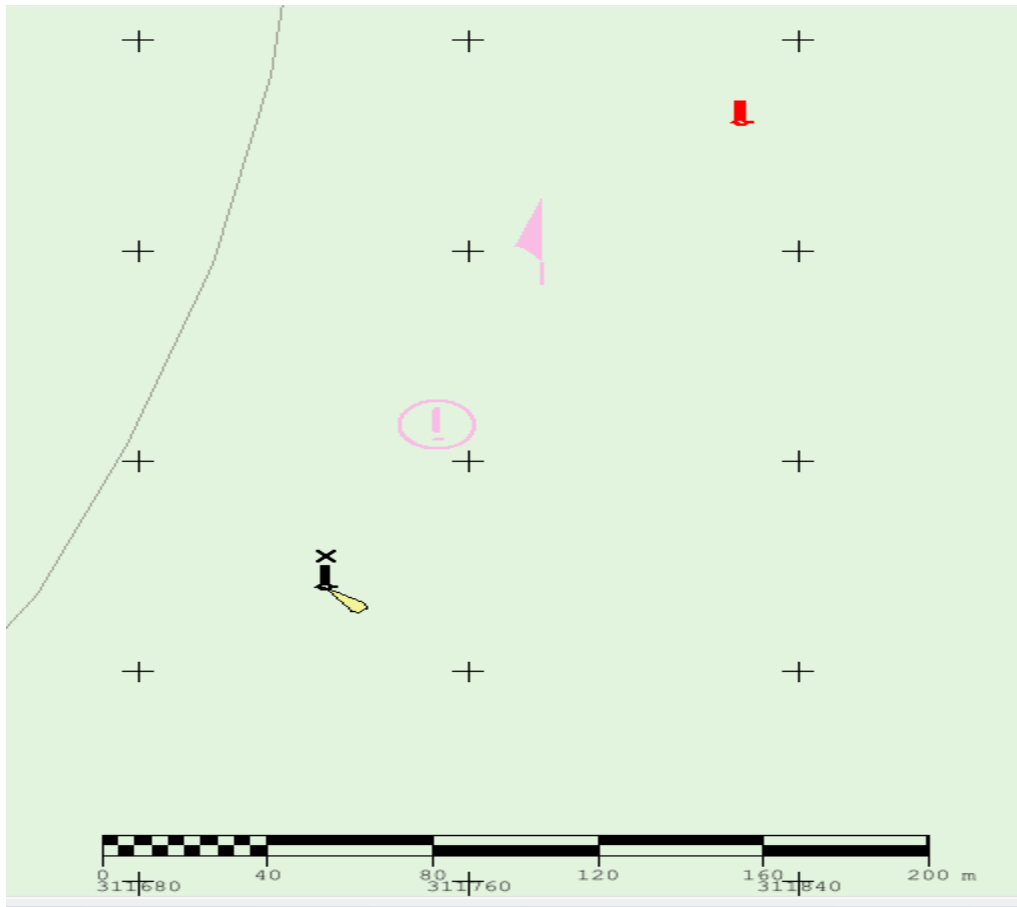
PORT MELBOURNE OUTER ANCHORAGE  
BEACON CHARTED INCORRECTLY**Date:** 01 June 2022**Refers:** NA.**Details:** Mariners are advised that, Outer Anchorage Beacon in position 37° 57.008' S 144° 51.429' E is charted incorrectly.

The beacon is lying immediately to the northeast of its present charted position

The image below shows the currently charted ENC position in "Black", and the position of the same beacon as surveyed in "Red".

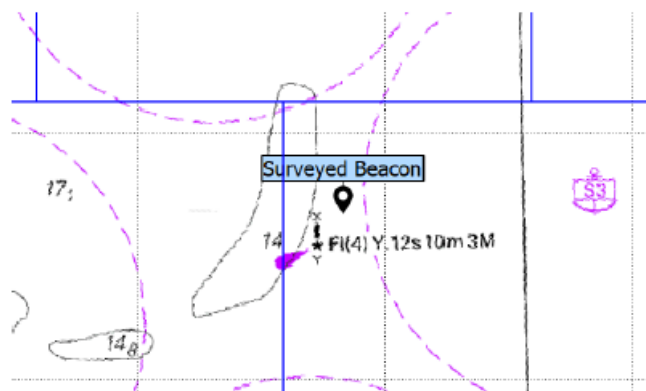
Buoy	Characteristic	Actual Position
Yellow Beacon	Fl (4) .12s 10m 3M	37° 56'.914 S 144° 51' .500".

**Charts & Publications affected** ENC AU5MEL01**Further notice:** No further Notice will be issued**Warwick Laing**  
Harbour Master



Location:

	Easting	Northing
ENC	311721.80	5797554.07
Surveyed	311826.02	5797728.86
Diff	-104.22	-174.79



This notice is a direction of the Harbour Master pursuant to section 232 of the *Marine Safety Act 2010* (Vic)  
 The requirements of section 232(2) have been taken into account.

Victorian Notices to Mariners can be downloaded from the Victorian Ports Corporation (Melbourne) website  
[www.vicports.vic.gov.au](http://www.vicports.vic.gov.au)



This notice is a direction of the Harbour Master pursuant to section 232 of the *Marine Safety Act 2010* (Vic)  
The requirements of section 232(2) have been taken into account.

---

Victorian Notices to Mariners can be downloaded from the Victorian Ports Corporation (Melbourne) website  
[www.vicports.vic.gov.au](http://www.vicports.vic.gov.au)