

The following Notice to Mariners is published for general information

Australia – Victoria

No. – 181 (T) - 2022

**PORT OF MELBOURNE  
PORT PHILLIP BAY TEMPORARY EXCLUSION ZONE FOR  
TEK-OCEAN SPIRIT**

**Date:** 18 May 2022

**Refers:** NA

**Details:** Mariners are advised the Vessel “**TEK OCEAN SPIRIT**” is scheduled to arrive Point Nepean Port Phillip Bay on or about 21<sup>st</sup> May 2022.

The “**TEK OCEAN SPIRIT**” will complete the installation of 16 Pyramid artificial reef units off Point Nepean, assisted by work boat “**Capability Study**” from 22<sup>nd</sup> May to on about 24<sup>th</sup> May 2022.

Mariners are advised that a temporary exclusion zone of 250 m will be established around the “**TEK OCEAN SPIRIT**”. Authorised vessels working in proximity of the operations excepted. The site engineer can be contacted on 0437 584 992.

For further information contact Melbourne VTS on 9644 9700.

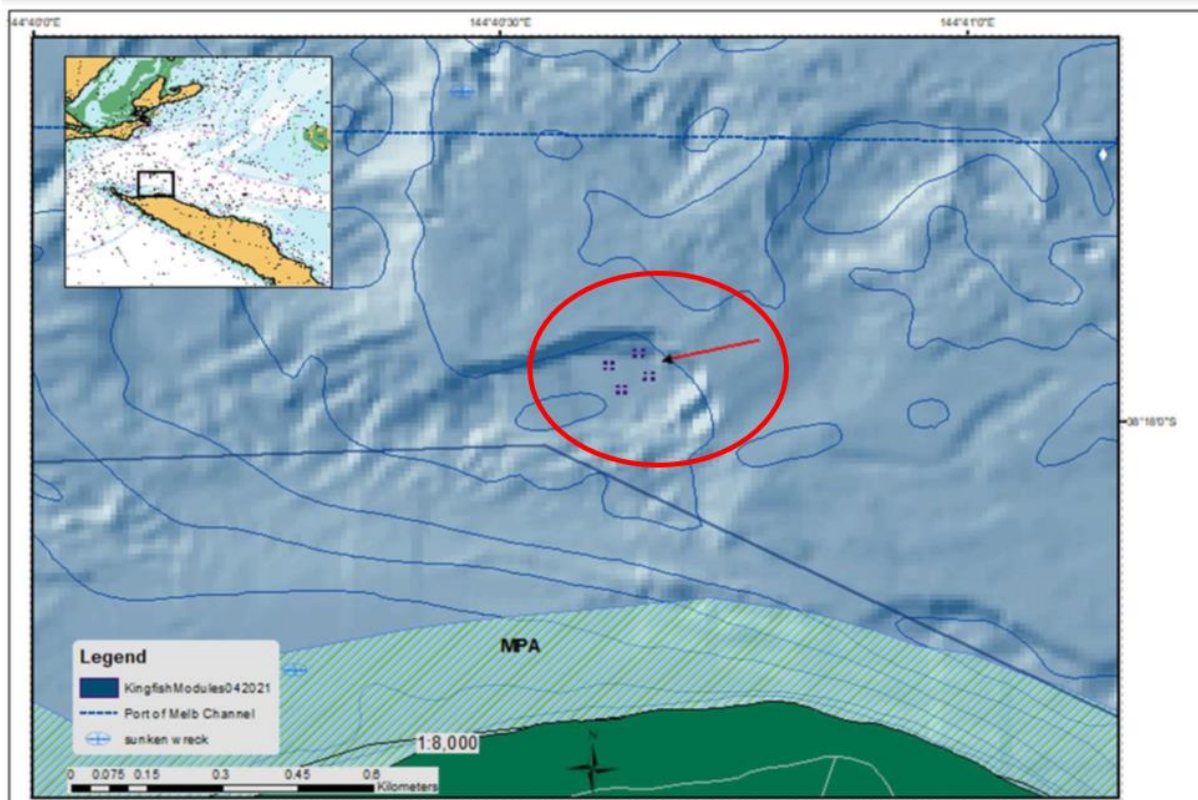
**Mariners are advised to navigate with caution in the vicinity of the “TEK OCEAN SPIRIT” and the “Capability Study” and shall reduce speed having due regard to the safety of the operation.**

**Charts & Publications affected** AUS 143, AUS 144, AUS 158

**Further notice:** Further Notice will be issued



**Warwick Laing  
Harbour Master**



This notice is a direction of the Harbour Master pursuant to section 232 of the *Marine Safety Act 2010* (Vic).  
The requirements of section 232(2) have been taken into account.

Victorian Notices to Mariners can be downloaded from the Victorian Ports Corporation (Melbourne) website  
[www.vicports.vic.gov.au](http://www.vicports.vic.gov.au)

**Reef Coordinates:**

Unit	Latitude	Longitude
1	38° 17.94690 S	144° 40.65402 E
2	38° 17.95332 S	144° 40.65378 E
3	38° 17.95350 S	144° 40.66200 E
4	38° 17.94702 S	144° 40.66224 E
5	38° 17.96166 S	144° 40.62438 E
6	38° 17.96814 S	144° 40.62414 E
7	38° 17.96832 S	144° 40.63242 E
8	38° 17.96184 S	144° 40.63260 E
9	38° 17.93562 S	144° 40.61088 E
10	38° 17.94210 S	144° 40.61064 E
11	38° 17.94228 S	144° 40.61892 E
12	38° 17.93580 S	144° 40.61910 E
13	38° 17.92146 S	144° 40.64304 E
14	38° 17.92794 S	144° 40.64286 E
15	38° 17.92812 S	144° 40.65108 E
16	38° 17.92164 S	144° 40.65126 E

This notice is a direction of the Harbour Master pursuant to section 232 of the *Marine Safety Act 2010* (Vic)  
The requirements of section 232(2) have been taken into account.

---

Victorian Notices to Mariners can be downloaded from the Victorian Ports Corporation (Melbourne) website  
[www.vicports.vic.gov.au](http://www.vicports.vic.gov.au)