

NOTICE TO MARINERS

GIPPSLAND PORTS



The following navigation warning is published for general information

AUSTRALIA - VICTORIA

No.126 OF 2022

PORT OF GIPPSLAND LAKES

LAKES ENTRANCE BAR

NAVIGATION WARNING

DEPTHS COMPROMISED FOLLOWING SEVERE WEATHER EVENT

DATE: 5th April 2022

PREVIOUS NOTICE: Notice to Mariners No.195 of 2020 is referred and cancelled.

DETAILS: Mariners are advised that following the recent severe weather event environmental conditions have caused the TSHD Tommy Norton to abort dredging operations temporarily.

A preliminary survey conducted this morning and again this afternoon indicates that depths on the centerline of the Lakes Entrance leads have been compromised by the migration of sand from East to West. The migration has seen depths that were previously 4.6m LAT (Monday 28th March) reduced to <2.5m LAT today on the previous “**Green Light**” leading line.

The survey indicates the deepest available water to transit the Lakes Entrance Bar to the Entrance Channel is now aligned on Line 3 – See the attached survey with the (blue) leading line changed to line 3.

The Lakes Entrance Approach leading “**lights in line**” have been changed to Line 3 bearing 358°(T) to the Flagstaff.

Further surveys will be conducted to monitor any changes. Dredging operations will continue as soon as environmental conditions allow.

In the meantime, Mariners are advised to take extra precaution when crossing the Bar at Lakes Entrance, noting that the best time

NOTICE TO MARINERS

GIPPSLAND PORTS



to cross the bar is during daylight hours at slack water in the entrance channel following high water.

For further information please call Gippsland Ports Harbour Master on 0427 610 025

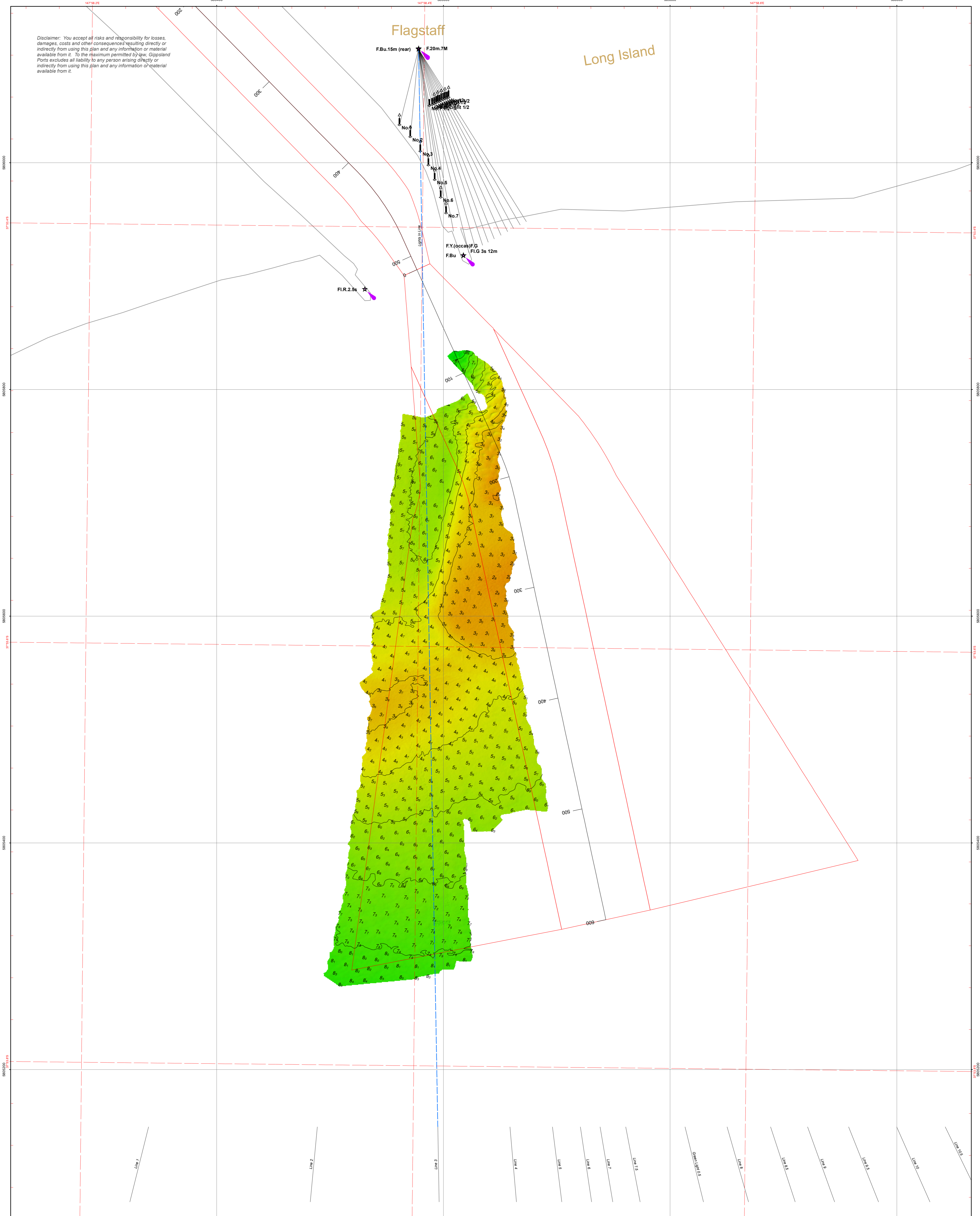
CHARTS ENC AUSLEN01
AFFECTED:

PUBLICATIONS Gippsland Ports Waterways online website available at;
AFFECTED: <https://www.gippslandports.vic.gov.au/boating/waterways-online/>

FURTHER A further notice will be issued.
NOTICE:

CAPT. BEVIS HAYWARD
HARBOUR MASTER
GIPPSLAND PORTS

Disclaimer: You accept all risks and responsibility for losses, damages, costs and other consequences resulting directly or indirectly from using this plan and any information or material available from it. To the maximum permitted by law, Gippsland Ports excludes all liability to any person arising directly or indirectly from using this plan and any information or material available from it.



Amendment List			Equipment	Reliability
Date	Rev.	Description	R2 Sonic 2022 multibeam sonar; RTK enabled Applanix POS MV 320 GNSS position and orientation system	Depth Accuracy - ZOC A1 Position Accuracy - ZOC A1 Full bottom search completed
			Previous Plan Numbers	6555

Datum Diagram	
AHD (m)	Chart Datum (m)
10.610	11.367
0.000	0.757
-0.757	-0.000

Scale 1:1,500 @ A1

0 25 50 100 150 metres

Notations Datum for soundings is Chart Datum, which is 0.757 metres below A.H.D. Co-ordinate system is GDA2020 (Red) and MGA2020, Zone 55 (Grey). Horizontal and Vertical positioning derived using RTK-GNSS. Countours are at 1m intervals. All values are in metres. Negative depths indicate drying heights.

Surveyed by	P.Hahnemann (BAppSc Surveying)
Date of Survey	5th April 2022
Compiled by	P.Hahnemann (BAppSc Surveying)
Checked by	M.Spykers (BAppSc Surveying)
Date Checked	5th April 2022



Gippsland Lakes

Lakes Entrance
Vicinity of The Entrance

6557

Sheet 1 of 1 **A1**