


Australia – Victoria

No. 103 (T) - 2022

PORT MELBOURNE

PORT MELBOURNE CHANNEL BEACON 6 REPLACEMENT COMPLETED

- Date:** 22 March 2022
- Refers:** NtM 092 (T) / 2022 and is hereby cancelled.
- Details:** Mariners are advised that the replacement operations of Beacon 6 at Port Melbourne Channel are now completed, and all restrictions have been lifted.
- New Beacon is in position 37° 54' 32.70255" S 144° 55' 33.26515 E, with the original beacon top mark and red light flashing every 2 seconds (Fl.R.2s).
- For further information, please contact Melbourne Vessel Traffic Service on VHF Channel 12 or 9644 9700.
- Charts & Publications affected:** (ENC) AU5MEL01
- Further notice:** No further notice will be issued



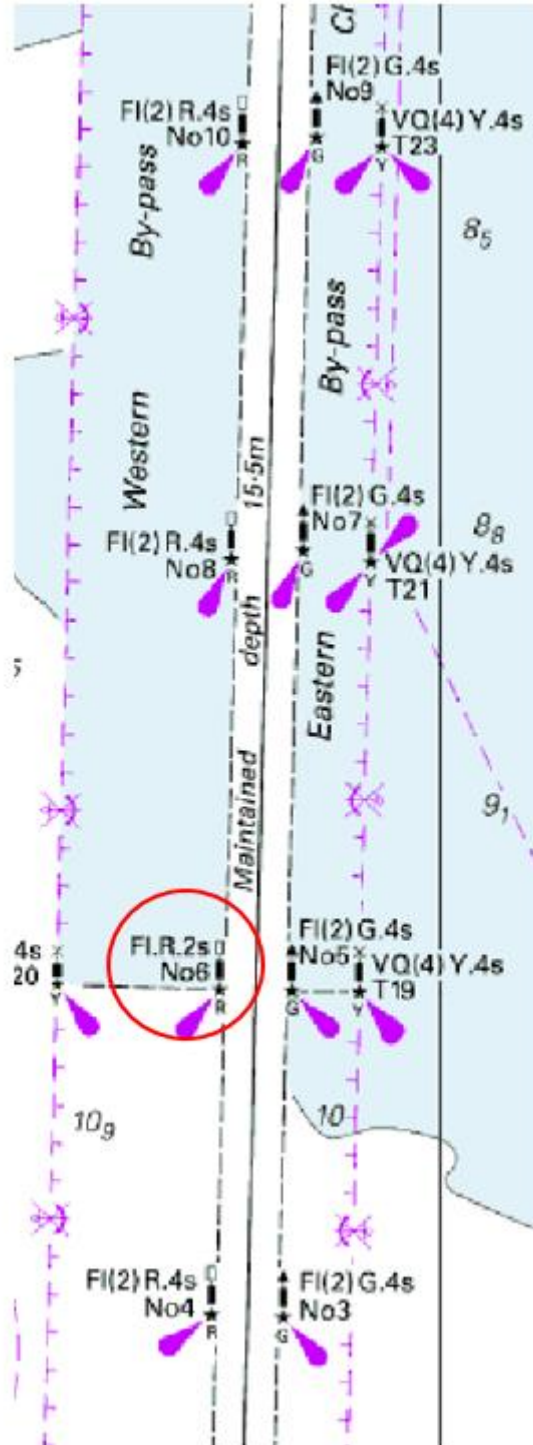
David Shennan  
Harbour Master



This notice is a direction of the Harbour Master pursuant to section 232 of the *Marine Safety Act 2010* (Vic)  
The requirements of section 232(2) have been taken into account.

---

Victorian Notices to Mariners can be downloaded from the Victorian Ports Corporation (Melbourne) website  
[www.vicports.vic.gov.au](http://www.vicports.vic.gov.au)



**NOT FOR NAVIGATIONAL USE**

This notice is a direction of the Harbour Master pursuant to section 232 of the *Marine Safety Act 2010* (Vic). The requirements of section 232(2) have been taken into account.

Victorian Notices to Mariners can be downloaded from the Victorian Ports Corporation (Melbourne) website [www.vicports.vic.gov.au](http://www.vicports.vic.gov.au)