

Australia – Victoria

No. 092 (T) - 2022

**PORT MELBOURNE
PORT MELBOURNE CHANNEL BEACON 6 REPLACEMENT**

Date: 18 March 2022

Refers: N/A

Details: Mariners are advised that piling operations at Port Melbourne Channel Beacon 6 in position 37° 54.5' S 144° 55.6' E will occur on or about 21 March 2022 during daylight hours, subject to weather.

The existing beacon top mark and red light flashing every 2 seconds (Fl.R.2s) will be fitted on the new beacon 6.

The following vessels will be in attendance to support installation works:

1. MV LOBO – Crew transfer
2. DSV Matilda Mae – Dive support vessel
3. Taree – Crane. Supply Barge
4. JUB II – Jack up Barge / Piling Barge
5. Taurus – Assist Tug

Mariners are advised that during piling operations, a 100m minimum wake temporary exclusion zone will be established in position 37° 54.5' S 144° 55.6'E. Authorised vessels of the operations are excepted.

For further information, please contact Melbourne Vessel Traffic Service on VHF Channel 12 or 9644 9700.

Mariners are advised to navigate with minimum wake in the vicinity of the work.

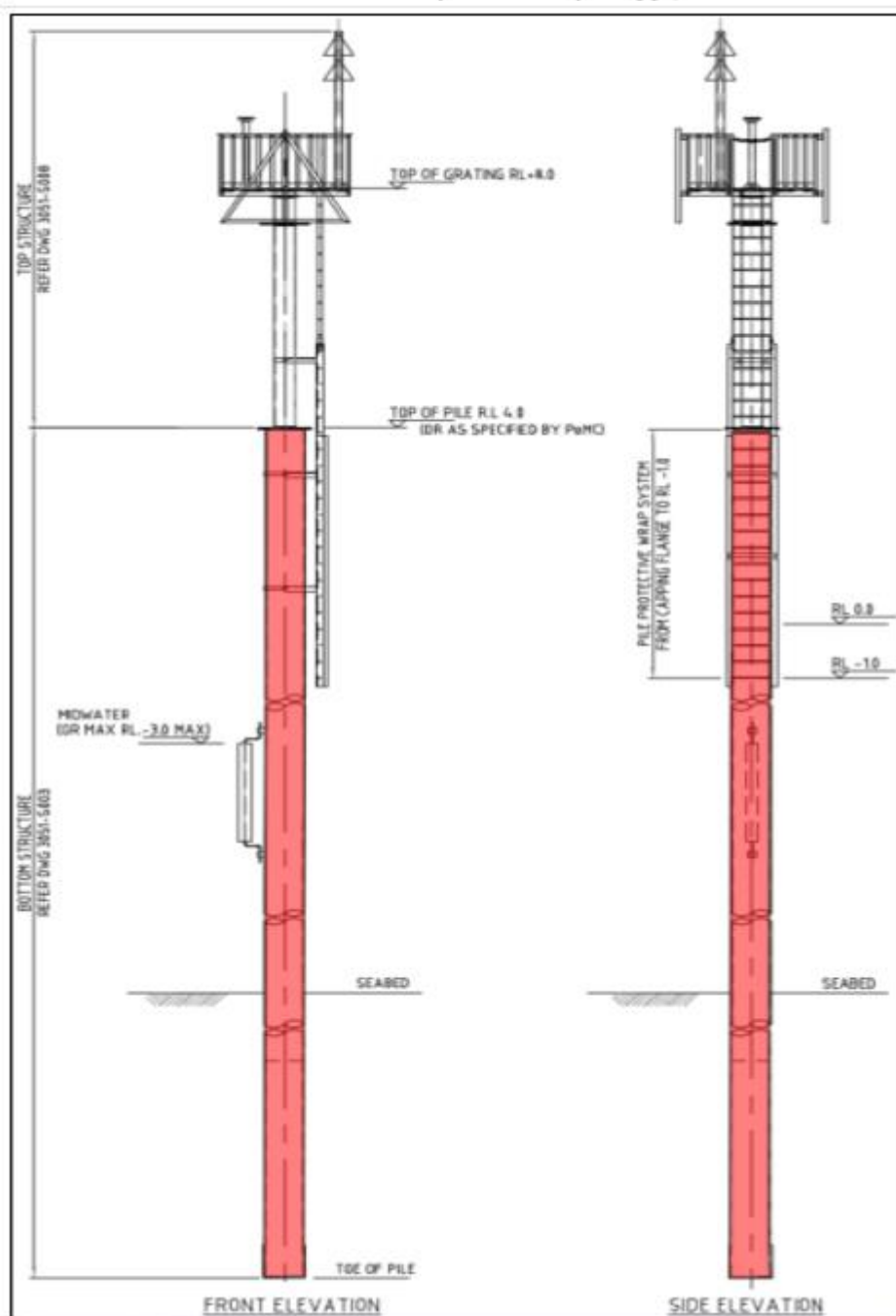
**Charts &
Publications
affected**

(ENC) AU5MEL01

Further notice: Further Notice will be issued

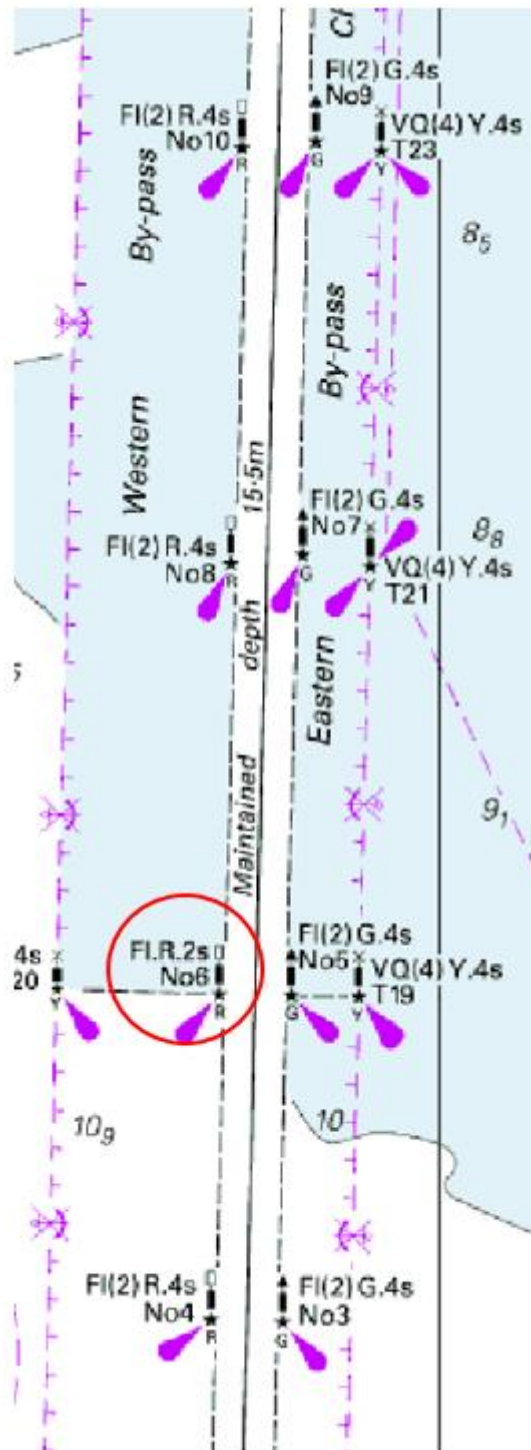


David Shennan
Harbour Master



This notice is a direction of the Harbour Master pursuant to section 232 of the *Marine Safety Act 2010* (Vic)
The requirements of section 232(2) have been taken into account.

Victorian Notices to Mariners can be downloaded from the Victorian Ports Corporation (Melbourne) website
www.vicports.vic.gov.au



NOT FOR NAVIGATIONAL USE

This notice is a direction of the Harbour Master pursuant to section 232 of the *Marine Safety Act 2010* (Vic)
The requirements of section 232(2) have been taken into account.

Victorian Notices to Mariners can be downloaded from the Victorian Ports Corporation (Melbourne) website
www.vicports.vic.gov.au