

The following Notice to Mariners is published for general information

## AUSTRALIA – VICTORIA

No. 037 (T) - 2022

### PORT OF MELBOURNE

#### REDUCTION OF MAINTAINED DEPTHS

**Date:** 04 February 2022

**Refers:** NTM 239(T) / 2021 refers and is hereby cancelled.

**Details:** Mariners are advised of a reduction to the declared maintained depth of the following berth pockets and swing basins.

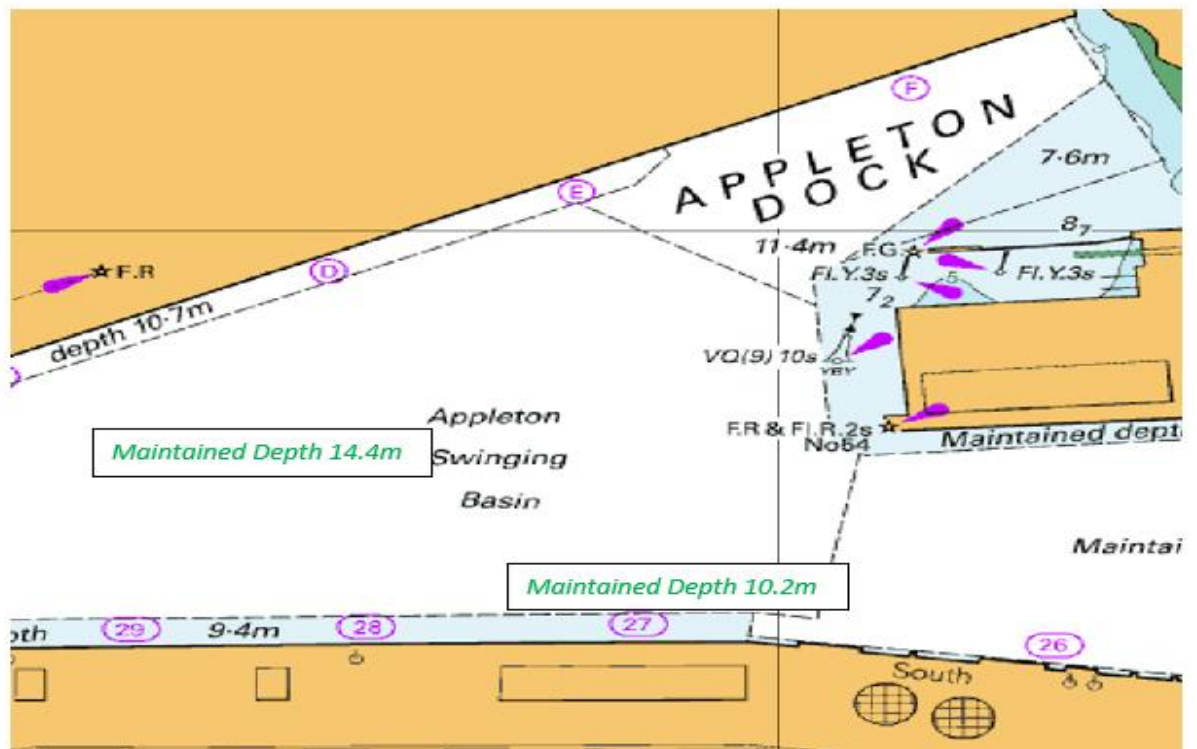
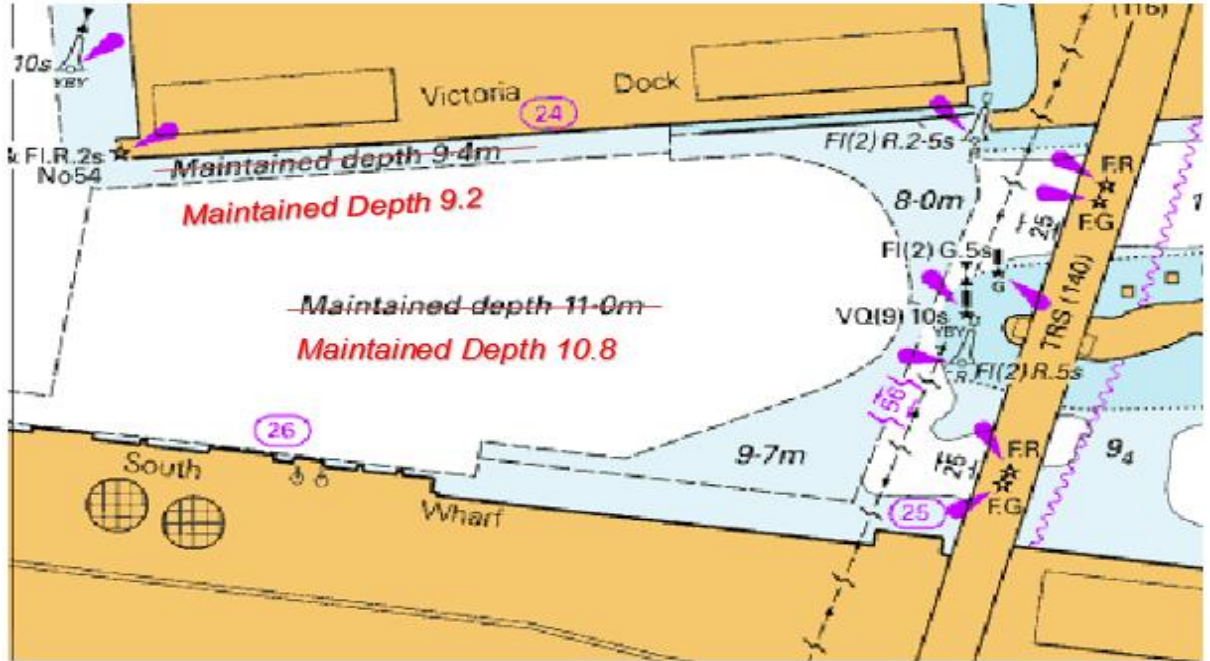
Berth		Maintained depth (m)	Ship's limits at berth (m)		Wharf height (m) above Chart Datum	General remarks
Name	Length (m)	Berth	Max. draught	Max. length		
Victoria Dock	315	9.2	8.6	250	4.0	General cargo berth; sub-leased
South Wharf 24		9.2	8.6			Not used for Shipping
South Wharf 27	292	10.2	9.6	185		
South Wharf 30		8.9	8.3			Not Used for Shipping
South Wharf 31		8.4	7.8			Not used for shipping

Swinging basin	Diameter (m)	Maintained depth (m)	Max. draught at zero tide (m)
Appleton	366 <sup>2</sup>	14.4	13.8
Victoria Dock		10.8	

*2 Swinging basin diameter is reduced when vessels occupy berths at Appleton Dock/South Wharf*

Any vessel with dimensions greater than the revised berth limits must apply for an Overdraft Permit if intending to utilise the above berths.

Further information can be obtained from Melbourne VTS on 9644 9789 or VHF channel 12.



This notice is a direction of the Harbour Master pursuant to section 232 of the *Marine Safety Act 2010* (Vic). The requirements of section 232(2) have been taken into account.

Victorian Notices to Mariners can be downloaded from the Victorian Ports Corporation (Melbourne) website [www.vicports.vic.gov.au](http://www.vicports.vic.gov.au)

**Charts & Publications affected:** (ENC) AU5MEL01, Harbour Master's Directions – Port of Melbourne Edition 12.1 (Table 3(j) Berth information, berthing and unberthing, and Table 3(k) Swinging basin dimensions.

**Further notice:** Further Notice will be issued.



**Warwick Laing**  
**Deputy Harbour Master**