

The following Notice to Mariners is published for general information

Australia – Victoria

No. – 298 (T) - 2021

PORT MELBOURNE

PORT PHILLIP - SOUTH CHANNEL – SHOAL AREA

TEMPORARY VIRTUAL AID TO NAVIGATION TB6 and TB7 ESTABLISHED

Date: 06 October 2021

Refers: NA.

Details: Mariners are advised that recent surveys in the South Channel have identified areas of shoaling which is marked by a virtual buoy in the following location:

- Identification Message –TB6, TB7
- Established in position – TB 6 - 38° 18 .116S, 144° 44.352E
TB 7 - 38° 18. 219S, 144 44.352 E

The virtual buoys TB6 and TB 7 has been established to mark the shoaling.

Deep Draught vessels with draught greater than 13.80m are advised to pass Clear of TB6 and TB7.

For more information, contact Melbourne VTS on 9644 9700.

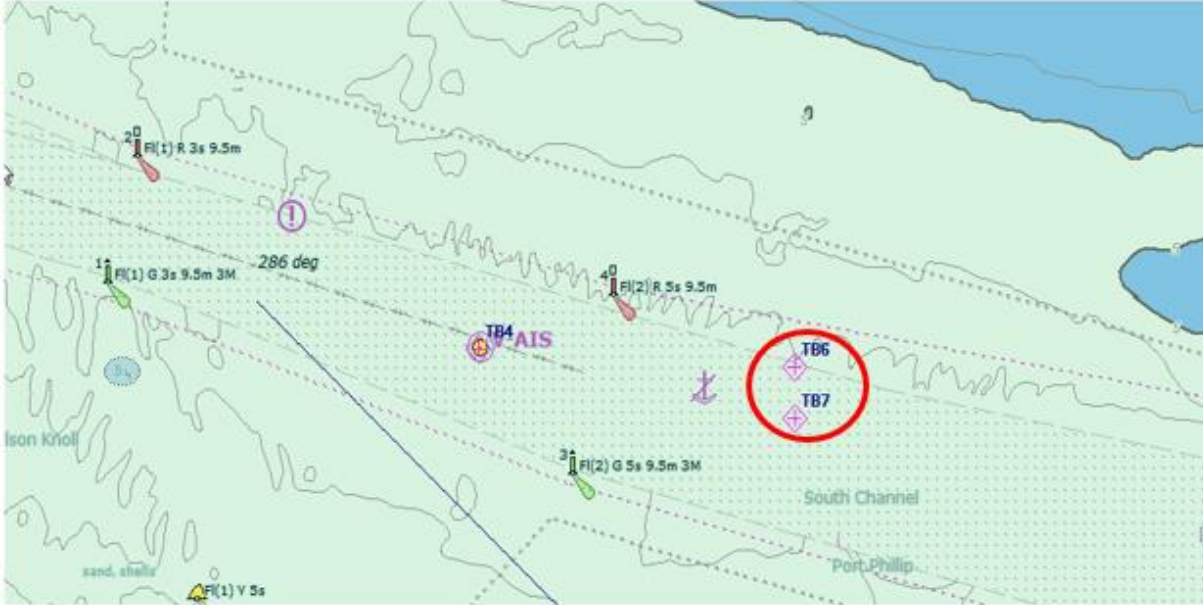
Mariners are advised to navigate with caution in South Channel.

Charts & Publications affected AUS 143, AUS 144, AUS 158
(ENC Cell Number) - AU 5144, AU 438144, AU 439144 respectively.

Further notice: Further Notice will be issued



Kell Dillon
Harbour Master



NOT FOR NAVIGATION

This notice is a direction of the Harbour Master pursuant to section 232 of the *Marine Safety Act 2010* (Vic)
The requirements of section 232(2) have been taken into account.

Victorian Notices to Mariners can be downloaded from the Victorian Ports Corporation (Melbourne) website
www.vicports.vic.gov.au