

Victorian Notice to Mariners

The following Notice to Mariners is published for general information.

Australia – Victoria

No. 202 (T) of 2021

WESTERN PORT – CRIB POINT – EX-HMAS OTAMA SUBMARINE

Date: EFFECTIVE IMMEDIATELY

Details:

Mariners are advised that the Ex-HMAS OTAMA (Oberon class submarine) approximately 800 metres north of Crib Point refinery jetty has listed significantly and has the risk of capsizing or possibly sinking imminently. An exclusion zone has been established for the waters around the Ex-HMAS OTAMA currently at approximate position 38° 20.477' S, 145° 13.445' E (refer to Map 1 and Image 1 & 2).

The Director Maritime Safety (as Delegate of the Director, Transport Safety) considers that this is an emergency, and that because of this emergency, persons who are not authorised should not enter or remain in the exclusion zone.

EMERGENCY DIRECTION

I, Shaun Rodenburg, the Director Maritime Safety (as Delegate of the Director, Transport Safety) make the following emergency direction under section 215(1)(a) of the *Marine Safety Act 2010*.

Persons, other than those authorised by Parks Victoria, the Director, Transport Safety (or delegate) or the Victorian Regional Channels Authority, must not enter or remain on the waters within 200 metres of the Ex-HMAS OTAMA where she rests, from the time of publication of this notice until further notice.

Mariners are directed not to enter or remain in the waters in the Exclusion Zone.

This direction applies to waters in the Exclusion Zone.

AUS Charts and Publications Affected: AUS 151

Victorian Charts and publications affected: Nil

Further Notice: A further Notice will be issued as appropriate.

Further Information: For further information email information@transportsafety.vic.gov.au



SHAUN RODENBURG
Director Maritime Safety

23/06/2021

Maritime Safety Victoria
A branch of Transport Safety Victoria

PO Box 2392, Melbourne Victoria 3001 T 1800 223 022
E information@transportsafety.vic.gov.au transportsafety.vic.gov.au

MAP 1 – EX-HMAS OTAMA POSITION

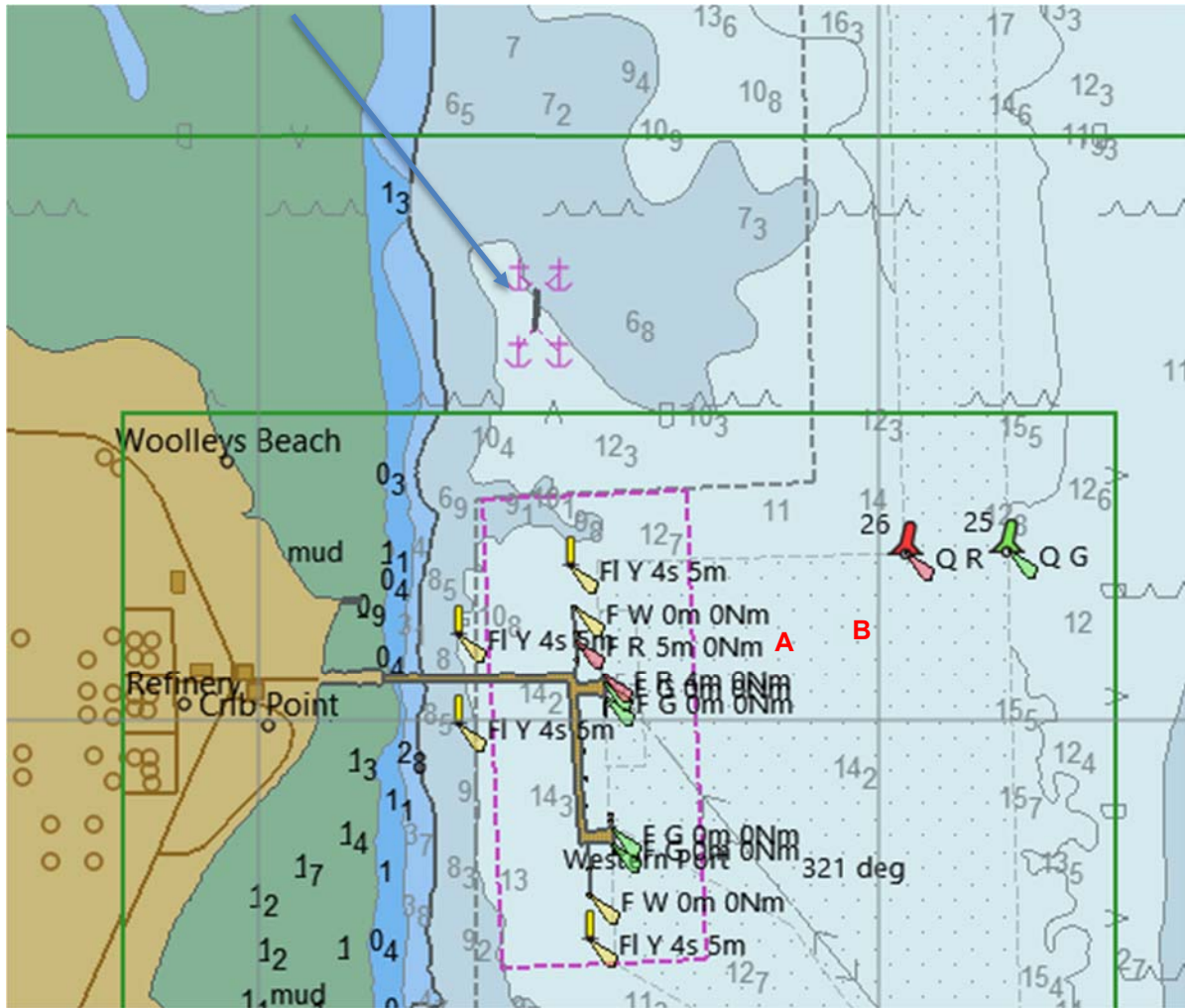


IMAGE 1 – EX-HMAS OTAMA



IMAGE 2 – 200m EXCLUSION ZONE AROUND EX-HMAS OTAMA

