

The following Notice to Mariners is published for general information

AUSTRALIA – VICTORIA

No. 074 (T) - 2021

PORT OF MELBOURNE

WILLIAMSTOWN CHANNEL LEAD LIGHT NOT IN OPERATION

Date: 22 March 2021

Refers: N/a

Details: Mariners are advised that the Williamstown Channel Lead Light (VQ WRG. 10m 5M) on southern end of webb dock in position 37° 50.84' S, 144° 54.32' E (K2344) is temporarily not in operation until further advised.

For further information, please contact Melbourne Vessel Traffic Service on VHF Channel 12 or 9644 9789.

Mariners are advised to navigate with caution.

Charts & AUS 154

Publications

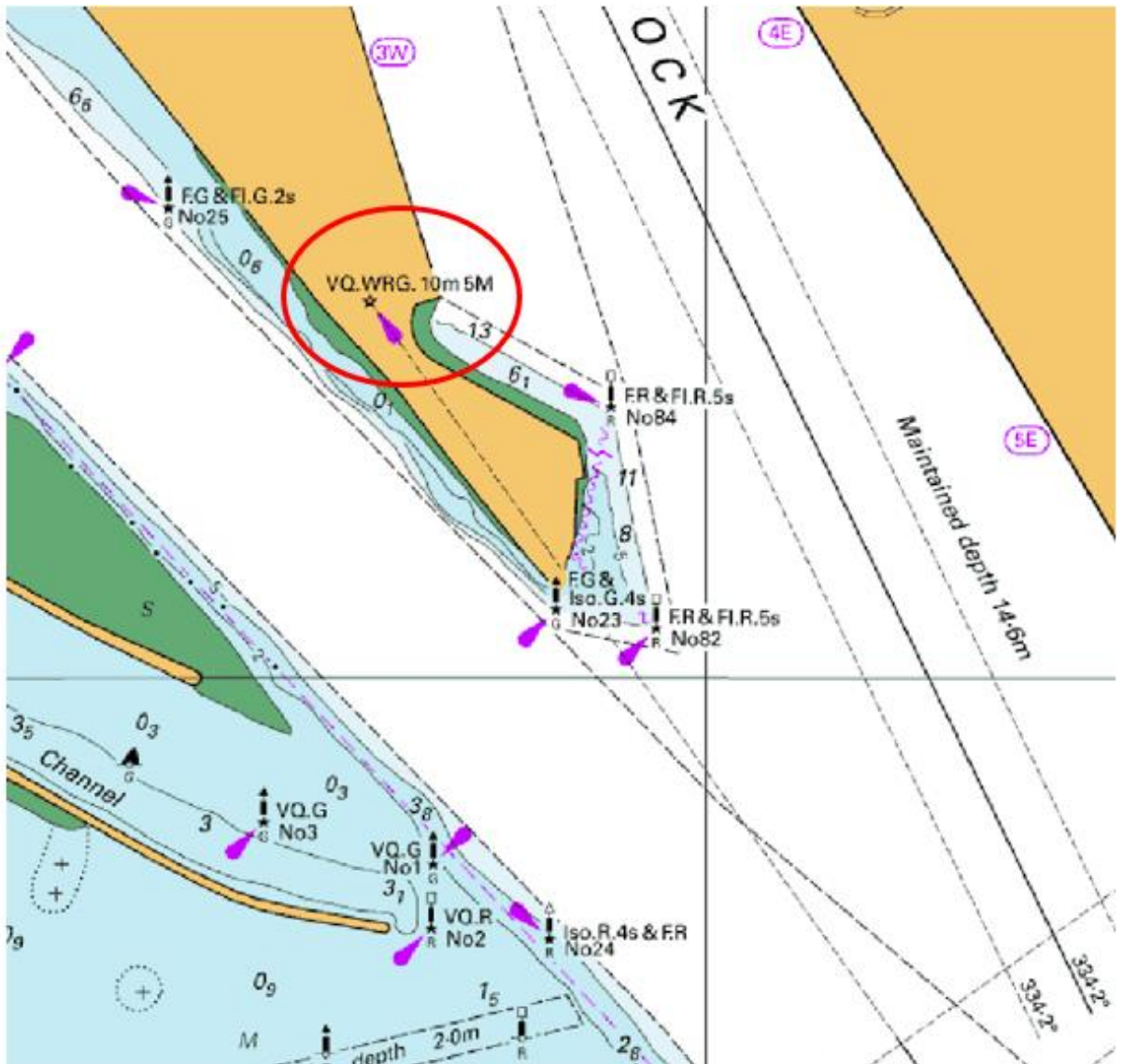
Affected:

Further notice: Further notice will be issued.



Kell Dillon

Harbour Master



This notice is a direction of the Harbour Master pursuant to section 232 of the *Marine Safety Act 2010* (Vic)
 The requirements of section 232(2) have been taken into account.

Victorian Notices to Mariners can be downloaded from the Victorian Ports Corporation (Melbourne) website
www.vicports.vic.gov.au