

The following Notice to Mariners is published for general information

**AUSTRALIA – VICTORIA**

**No. 015 (T) - 2021**

**PORT OF MELBOURNE**

**PORT PHILLIP - SOUTH CHANNEL – SHOAL AREA –  
TEMPORARY VIRTUAL AID TO NAVIGATION ESTABLISHED**

**Date:** 15 January 2021

**Refers:** NA

**Details:** Mariners are advised that recent surveys in the South Channel have identified an area of shoaling which is marked by a virtual buoy in the following location:

- Identification Message – TB4
- Established in position 38° 18.14168' S 144° 43.74491' E
- Minimum Depth 15.3 m

The virtual buoy TB4 has been established on the shoaling. Deep Draught vessels with draught greater than 13.5m are advised to pass either to the South or to the North of this position.

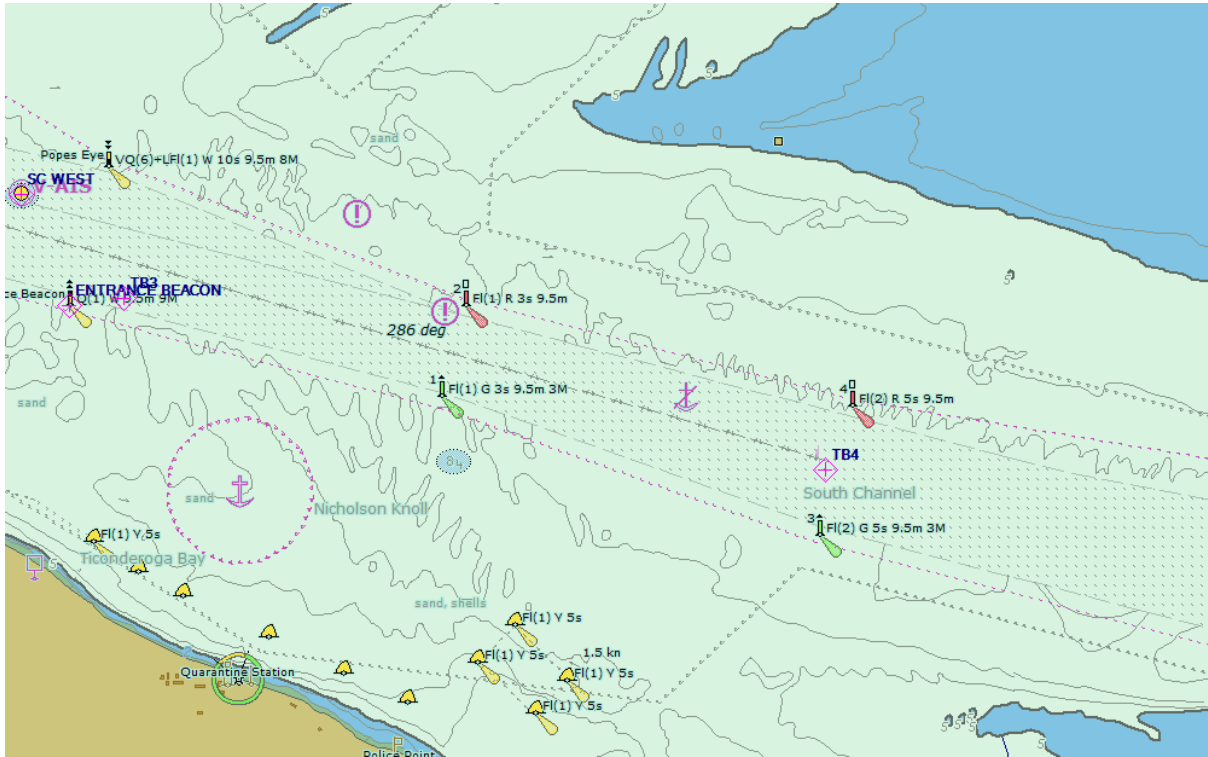
**Mariners are advised to navigate with caution in the vicinity of the virtual buoy.**

**Charts affected:** AUS 143, AUS 144, AUS 158  
(ENC Cell Number) - AU 5144, AU 438144, AU 439144 respectively.

**Further notice:** A further notice will be issued.



**Kell Dilon  
Harbour Master**



This notice is a direction of the Harbour Master pursuant to section 232 of the *Marine Safety Act 2010* (Vic)  
 The requirements of section 232(2) have been taken into account.

Victorian Notices to Mariners can be downloaded from the Victorian Ports Corporation (Melbourne) website  
[www.vicports.vic.gov.au](http://www.vicports.vic.gov.au)