

Australia – Victoria

No. 006 (T) – 2021

PORT OF MELBOURNE

YARRA RIVER

## WESTGATE BRIDGE AIR DRAFT REDUCED - DURING PAINTING WORKS- EXTENDED

**Date:** 06 January 2021

**Refers:** NtM 003 (T) /2021

**Details:** Mariners are advised that painting works conducted under the wings and the main spine of the West Gate Bridge will now be carried out from two types of platforms;

- 2 standard wing platforms on north and south side of the bridge.
- 1 central spine over water platform.

The wing platforms and support services do not extend below the lowest point of the bridge, and as such do not reduce the maximum permissible air draught. Workers will monitor shipping movements and clear the platform for applicable movements.

The central spine over the water platform, is **2.53m** below the current soffit of the bridge. **As such, it will reduce the maximum permissible air draught to 47.50m (from HAT)** and restrictions will apply for vessels transiting under the Westgate Bridge with an air draught greater than 47.5m.

This central spine platform is movable and will require approximately 1 hour to be moved clear of the channel. All works over the channel will be scheduled in consultation with VTS daily.

Melbourne VTS will manage vessel transits for vessels of an air draught greater than 47.5m, following the notification protocol as required to move the platform.

Vessels transiting under the Westgate Bridge with an air draught equal to and less than 47.50 meters air draught will not be restricted. Workers will monitor shipping movements and clear the platform for applicable shipping movements.

For further information contact Melbourne VTS on VHF Channel 12 or 03 9644 9700.

**Mariners are advised to navigate with caution when in the vicinity of the Westgate Bridge.**

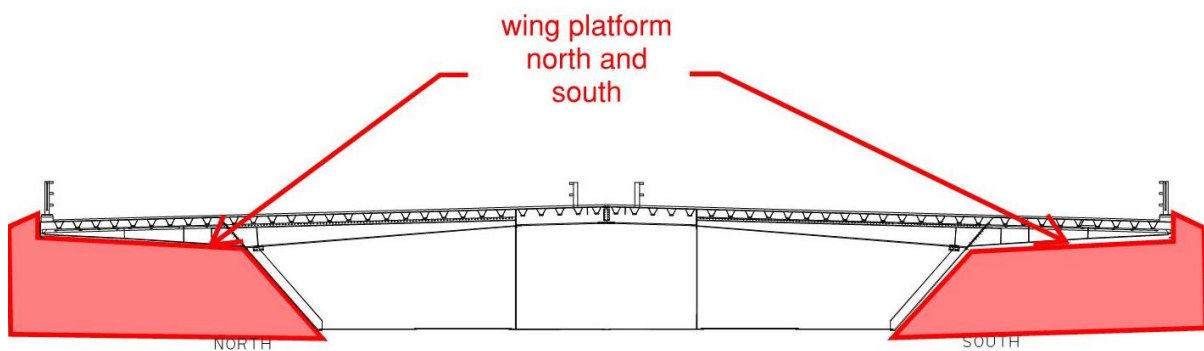
**Charts &  
Publications**

**affected:** AUS 154

**Further notice:** Further notice will be issued.



**Kell Dillon  
Harbour Master**

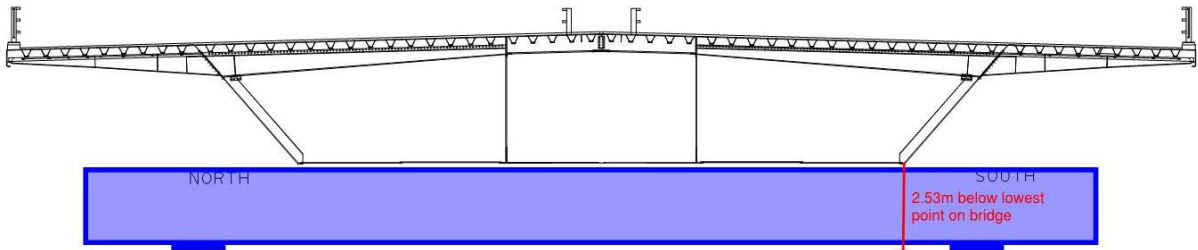


This notice is a direction of the Harbour Master pursuant to section 232 of the *Marine Safety Act 2010* (Vic)  
The requirements of section 232(2) have been taken into account.

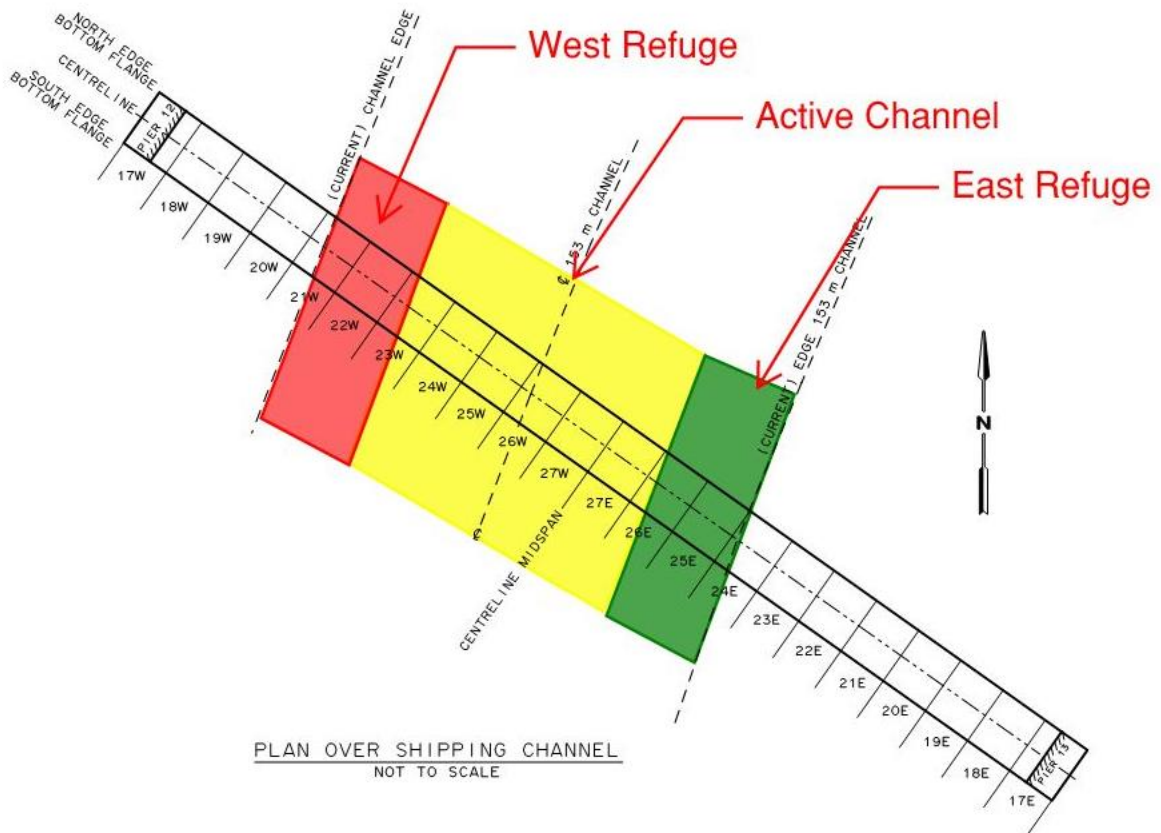
---

Victorian Notices to Mariners can be downloaded from the Victorian Ports Corporation (Melbourne) website  
[www.vicports.vic.gov.au](http://www.vicports.vic.gov.au)

## Central Spine Platform



ELEVATION OVER SHIPPING CHANNEL  
NOT TO SCALE



PLAN OVER SHIPPING CHANNEL  
NOT TO SCALE

This notice is a direction of the Harbour Master pursuant to section 232 of the *Marine Safety Act 2010* (Vic). The requirements of section 232(2) have been taken into account.

Victorian Notices to Mariners can be downloaded from the Victorian Ports Corporation (Melbourne) website [www.vicports.vic.gov.au](http://www.vicports.vic.gov.au)