



# Safety and Environment Management Plan

VRCA Port Waters of Geelong

March 2019

# Executive summary

## Background and Purpose of Plan

VRCA has prepared a Safety and Environment Management Plan (SEMP) as required by Part 6A of the Port Management Act 1995 (PMA). The purpose of the SEMP is to provide a comprehensive, risk based approach to safety and environment management by port managers. This SEMP is intended to complement existing documentation by bringing a “whole of port” perspective to the management of safety and environment within the port.

This SEMP has been prepared in accordance with the requirements of the Port Management Act (PMA) and the Ministerial Guidelines for Port Safety and Environment Management Plans (November 2012, referred to herein as the ‘Ministerial Guidelines’) and examines the full range of activities conducted by Victorian Regional Channels Authority (VRCA), who is responsible for the management of commercial navigation of the Port of Geelong waters, so that the significant hazards and risks are identified and controlled. The SEMP will assist VRCA to respond to significant hazards and risks in a coordinated, effective and practical way.

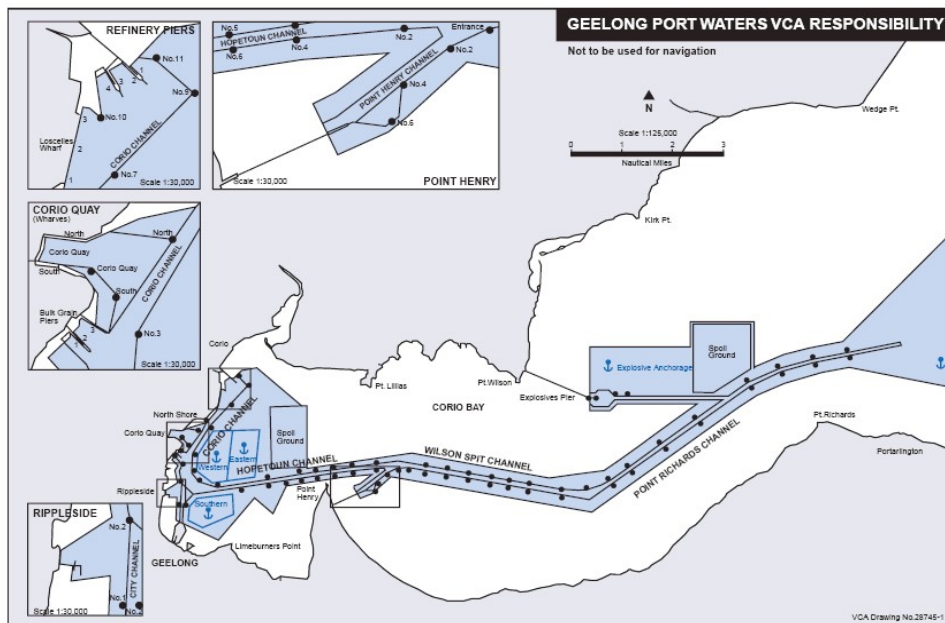
## Scope

VRCA is the nominated Port Manager for the waters of the Port of Geelong. This SEMP is directed at operations to provide safe and environmental sound services for activities in port waters. Port land and berths are the responsibility of GeelongPort and GrainCorp. Where there is a nexus between water and land, such as a berth, the three port managers engage to ensure their safety and environment planning integrate.

The SEMP demonstrates how VRCA undertakes planning around the management of the safety and environment. It does not include detailed policies and procedures around safety and environment as these occur within VRCA’s broader management systems. This approach avoids duplicating the content within VRCA’s management system in the SEMP

GeelongPort is the principal organisation responsible for the management of piers and wharves in the Port of Geelong. It manages fifteen berths in the port and approximately 90 hectares of declared port land. GrainCorp’s manages one berth servicing its Geelong export terminal. Declared port land incorporates the Bulk Grain Pier.

Other berths within port waters include the privately owned Cunningham Pier and Department of Defence’s Point Wilson pier.



## Geelong Port Waters

### Port activities

Activities falling within the scope of VRCA's SEMP have been generally be categorised into vessel navigation, navigation and berth asset management and emergency response.

#### Vessel navigation

Vessel navigation deals with the transit through the Port of Geelong's waters. This incorporates a number of service providers including marine control, tugs, lines boats, ship owners, master, pilots, recreational users and safety regulators.

#### Navigation and berth asset management

To enable vessel transit the management of relevant assets needs to be undertaken. For VRCA there are assets under its direct control such as the channel and navigation aids and assets controlled by others such as the berth infrastructure where VRCA does not have control but is reliant on them for vessel safety within port waters. This is a key area where VRCA's SEMP interacts with Geelong's other port managers.

#### Emergency response

Whilst VRCA's goal is to prevent any safety or environmental incident, it is cognisant that there remains some chance that an event will occur. These can be due to factors outside VRCA's control. If an incident occurs, VRCA needs to plan effective emergency responses to minimise the impact. Integrating emergency response between port managers, other port stakeholders and emergency agencies is important in ensuring its effectiveness.

# Amendment Notification Form

This form is to be used for notifying VRCA Geelong of suggested amendments to VRCA Geelong SEMP, or of changes to contact or resource details.

Please complete details and return to:

Marine Manager

VRCA Geelong

PO Box 1135

Geelong Vic 3220

Email: [admin@regionalchannels.vic.gov.au](mailto:admin@regionalchannels.vic.gov.au)

**From:**

Contact Person: .....

Organisation: .....

Address: .....

.....

City: ..... Postal Code.....

Phone / Fax: ..... Email: .....

**Suggested Amendments:**

Page:

Details:

.....  
.....  
.....  
.....  
.....  
.....  
.....  
.....  
.....

Signed: .....

Date:.....