

The following Notice to Mariners is published for general information

Australia – Victoria

No. 169 (T) – 2020

PORT MELBOURNE

**INSPECTION AND STRENGTHENING WORKS FOR SERVICES PROTECTION
BETWEEN YARRA RIVER BEACONS 33/34 AND 35/36 – EXTENDED**

Date: 1 June 2020

Refers: **NTM 064 (T) / 2020 refers and is hereby cancelled.**

Details: Mariners are advised that inspection and strengthening works for the services protection between Yarra River beacons 33/34 and 35/36 has been extended to approximately 31 August 2020.

Works will include diving and be conducted from the following vessels:

- *MV Venture, MV Jazz1, MV Pro diver 3* (Support Vessels)
- *MV Pro Diver and MV Alice* (Primary Dive Vessels)

Vessels operating within the vicinity of the works area shall reduce vessel speed so as to create no wash and pass the support vessel at a safe distance (see graphic below). The on water works supervisor in operational control of the works is contactable on 0437 532 347 or VHF Ch.12.

For more details please contact Melbourne VTS on (03) 9644 9700 or on VHF Channel 12.

Mariners are advised to navigate with additional caution and reduce speed so as to create no vessel wash when in the vicinity of the works at the services protection.

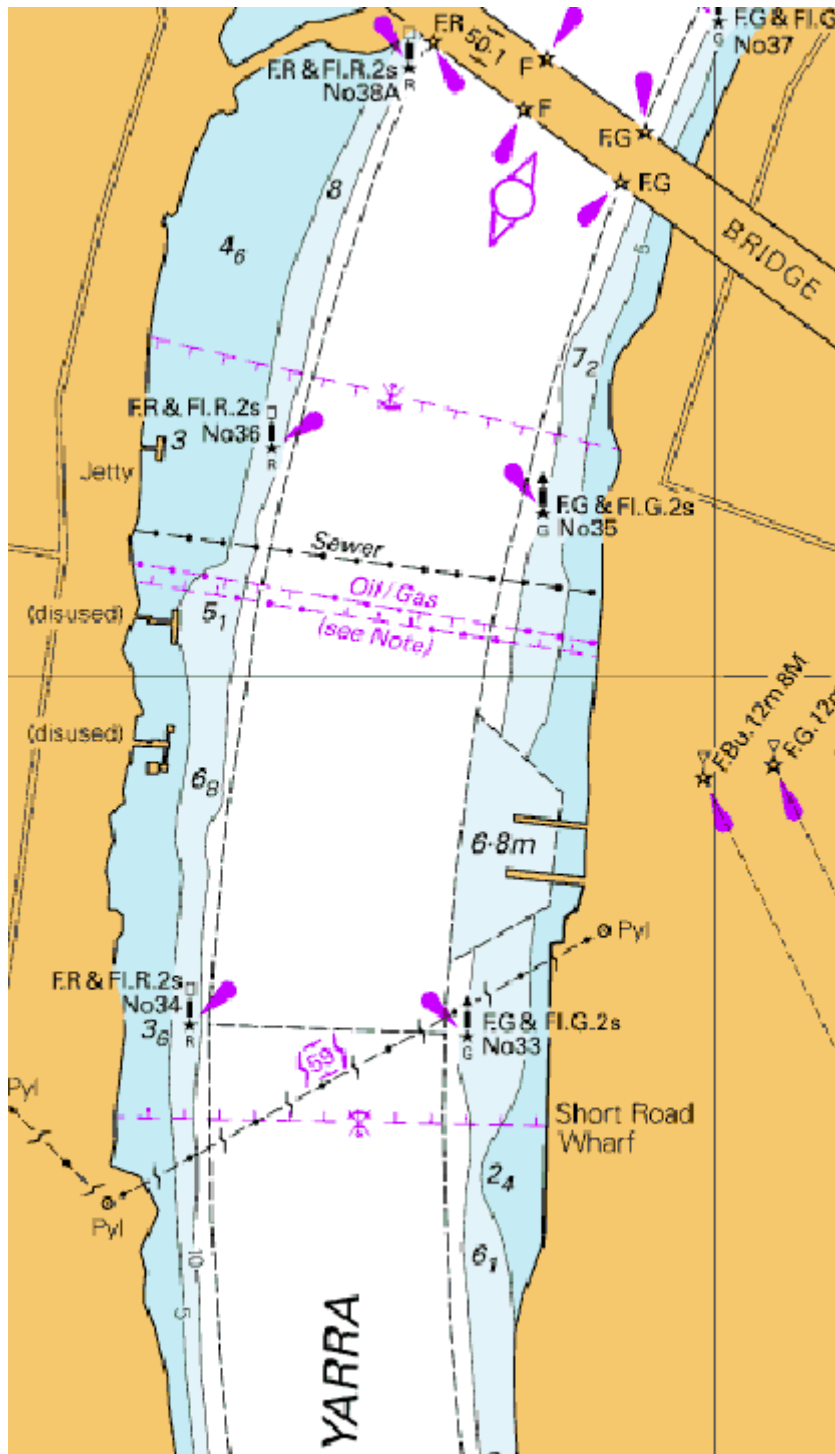
**Charts &
Publications**

affected: AUS 154

Further notice: Further Notice will be issued.



**Kell Dillon
Harbour Master**



NOT SUITABLE FOR NAVIGATION

Chartlet 1: Services Protection

This notice is a direction of the Harbour Master pursuant to section 232 of the *Marine Safety Act 2010* (Vic). The requirements of section 232(2) have been taken into account.

Victorian Notices to Mariners can be downloaded from the Victorian Ports Corporation (Melbourne) website www.vicports.vic.gov.au

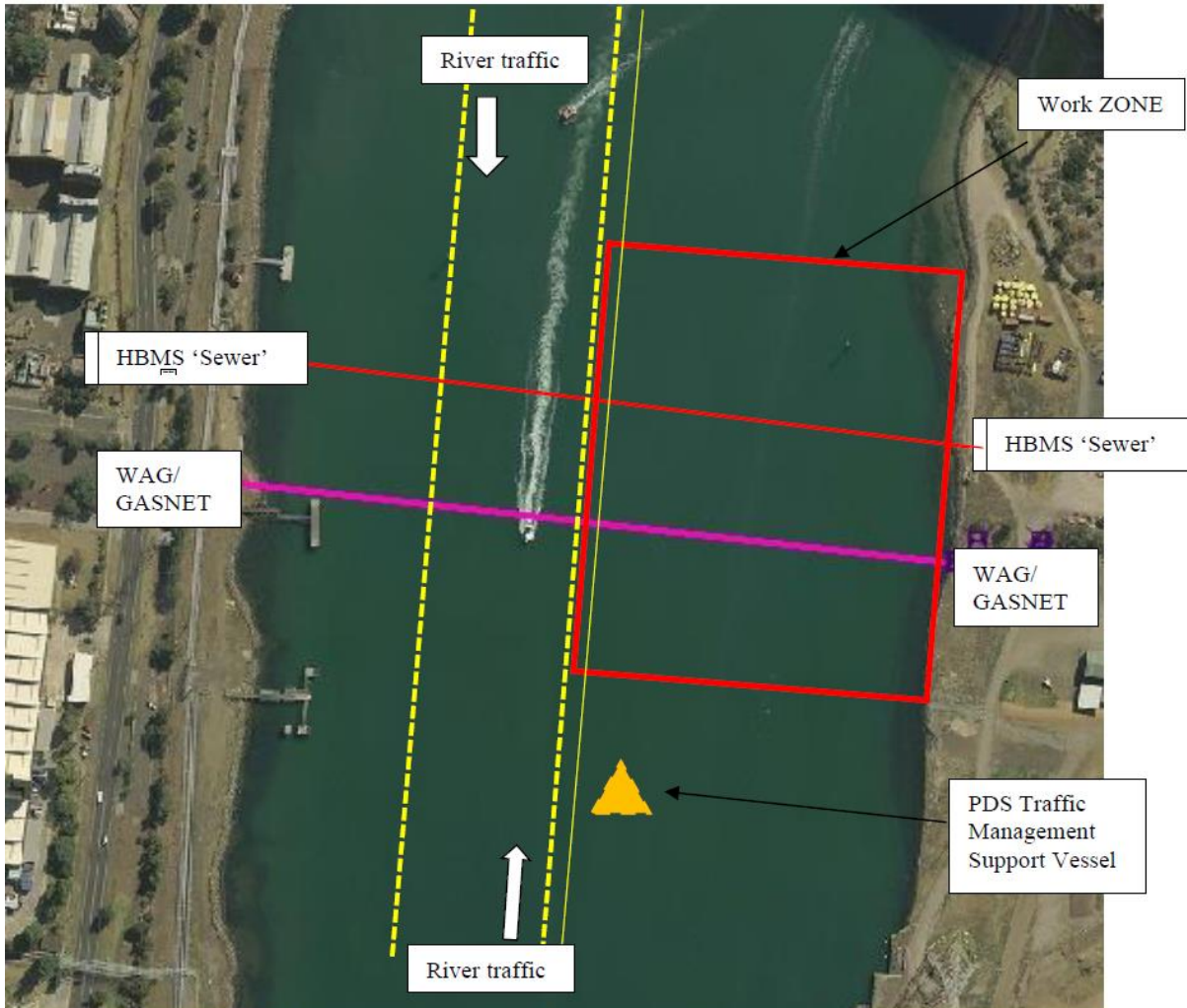


Figure 3. Overview of work zone and general positioning of traffic management vessel – When working EAST of the channel during Closure

This notice is a direction of the Harbour Master pursuant to section 232 of the *Marine Safety Act 2010* (Vic)
The requirements of section 232(2) have been taken into account.

Victorian Notices to Mariners can be downloaded from the Victorian Ports Corporation (Melbourne) website
www.vicports.vic.gov.au



Figure 4. Overview of work zone and general positioning of traffic management vessel – When working WEST of the channel during Closure

This notice is a direction of the Harbour Master pursuant to section 232 of the *Marine Safety Act 2010* (Vic)
The requirements of section 232(2) have been taken into account.

Victorian Notices to Mariners can be downloaded from the Victorian Ports Corporation (Melbourne) website
www.vicports.vic.gov.au