

VICTORIAN NOTICES TO MARINERS

The following Notice to Mariners is published for general information.



DATE: 24 March 2020

AUSTRALIA - VICTORIA

No. 108-2020

LOCAL PORT OF BARWON HEADS

LATERAL MARKS UPGRADE NAVIGABLE CHANNEL BARWON RIVER

UPSTREAM OF THE BARWON HEADS BRIDGE

Date: With immediate effect.

Details: Mariners are advised that the lateral marks for the Barwon River navigable channel upstream of the Barwon Heads Bridge, Barwon Heads have been upgraded.

Starboard hand and Port hand lateral marks have been repositioned to better define the navigable channel. The position of the navigable channel marks upstream of the Barwon Heads Bridge provided below;

(Position: WGS 84, Degree Decimal minutes)

AtN	Type	Latitude	Longitude
Barwon River STB No. 11	Starboard hand Lateral Buoy	38 16.788S	144 29.805E
Barwon River STB No. 13	Starboard hand Lateral Pile	38 16.666S	144 29.846E
Barwon River STB No. 15	Starboard hand Lateral Pile	38 16.593S	144 29.895E
Barwon River Port No. 12	Port hand Lateral Buoy	38 16.554S	144 29.980E
Barwon River Port No. 14	Port hand Lateral Pile	38 16.533S	144 30.025E
Barwon River Port No. 16	Port hand Lateral Pile	38 16.379S	144 30.239E
Barwon River Port No. 18	Port hand Lateral Pile	38 16.203S	144 30.499E
Barwon River Port No. 20	Port hand Lateral Pile	38 16.017S	144 30.600E
Barwon River Port No. 22	Port hand Lateral Pile	38 15.880S	144 30.555E
Barwon River Port No. 24	Port hand Lateral Pile	38 15.775S	144 30.286E
Barwon River Port No. 26	Port hand Lateral Pile	38 15.860S	144 30.043E

Mariners are advised to exercise caution when navigating in the area.

Mariners are advised to be alert to constantly shifting sediment in the navigable channel.

Mariners are further advised to always monitor the forming wave conditions at the river entry.

Mariners should be aware of submerged reef areas, Formby reef to the east and the fringing reef of the Barwon Head to the west of the river mouth.

Further information can be obtained by contacting the Local Port of Barwon Heads on: (03) 5254 1118 during usual office hours

**Charts &
Publications
Affected:**

Aus 143 Port Philip Bay
Australian Pilot Volume II (12th Ed 2013) Page 97

**Victorian Charts &
Publications affected:**

Schedule 10 Vessel Operating and Zoning Rules

Other Notices:

No. 53/06, issued 31/03/06, Port of Barwon Heads, River Entrance Sand Movements - Possible Reduction in Depth

No. 140(T), 2007, issued 02/11/07, Isolated hazard, wreckage awash at low tide, east of Barwon River entrance.

No. 238 – 2015, issued 11/12/2015, Sector Light Aid to Navigation

No. 38-2016, issued 01/02/2016, Shallow ground river navigation channel

No. 179(T) – 2017, MSV, issued 26/06/2017, Bass Strait – Barwon Heads

Further Notice: No further notice will be issued.

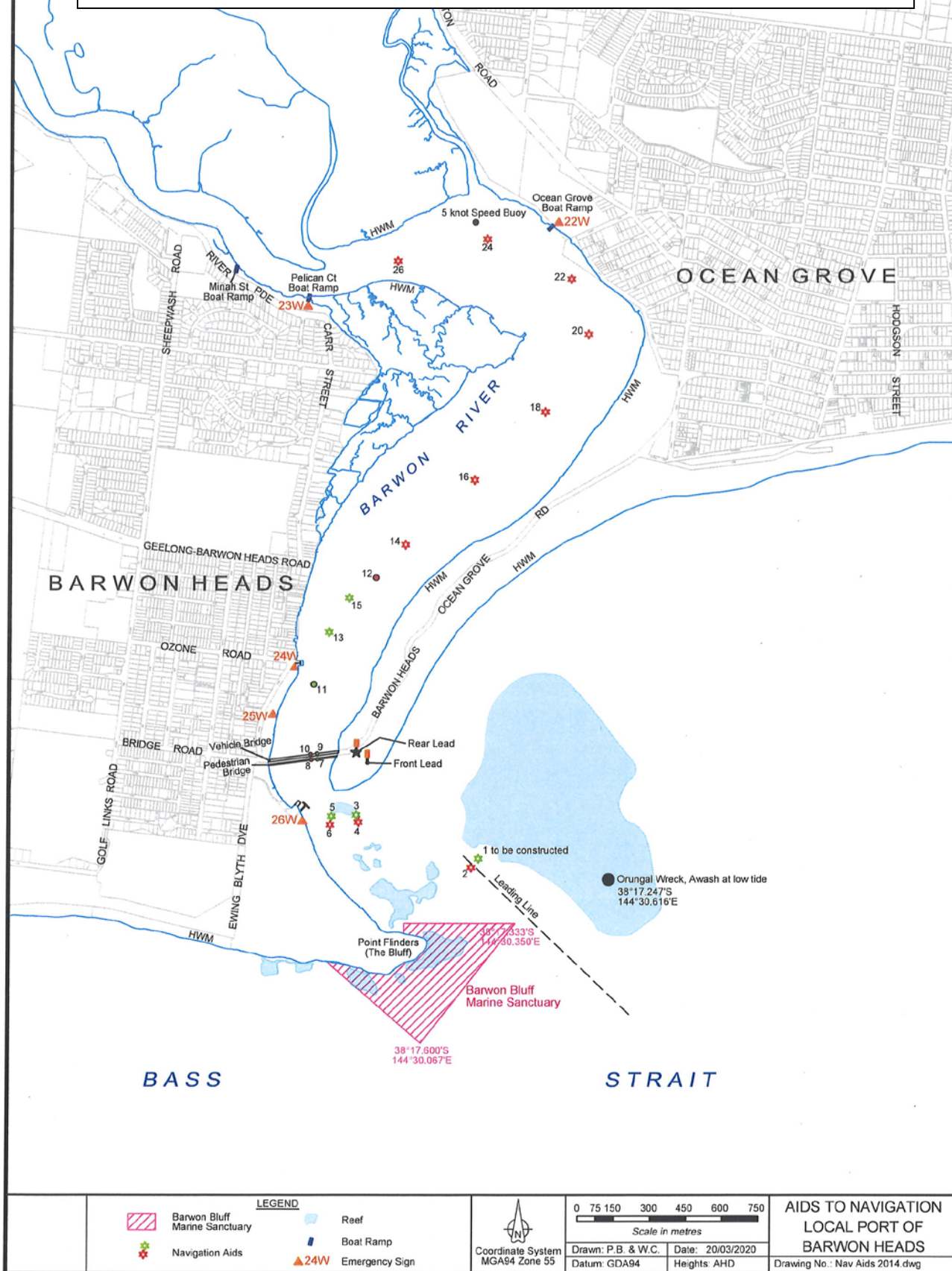
This Notice to Mariners is issued by the Barwon Coast Committee of Management Inc. delegated Local Port Manager for the Local Port of Barwon Heads for Department of Transport.

**G.W. McPIKE
Chief Executive Officer
Barwon Coast Committee of Management Inc.**

**Contact details;
Local Port Officer, Warren Chapman
Phone, 0418 506 151
5254 1118 usual office hours
Email: office@barwoncoast.com.au; warren@barwoncoast.com.au**

**Victorian Notices to Mariners can be downloaded from the
Victorian Regional Channels Authority website
www.regionalchannels.vic.gov.au**

LOCAL PORT OF BARWON HEADS **ILLUSTRATIVE MAP OF LIT AIDS TO NAVIGATION FOR THE** **BARWON RIVER, BARWON HEADS**



Victorian Notices to Mariners can be downloaded from the
 Victorian Regional Channels Authority website
www.regionalchannels.vic.gov.au

Examples of lateral marks in the Barwon River, lateral buoy and lateral pile with solar light; Fl 4s



LOCAL PORT OF BARWON HEADS LIT AIDS TO NAVIGATION

20/03/2020

Datum: WGS84

			Deg Decimal Minutes		Deg, Min, Sec		Decimal Degress	
Item	AtN	Type	Latitude	Longatude	Latitude	Longatude	Latitude	Longitude
RIVER ENTRY TO BARWON HEADS BRIDGE								
	SECTOR LIGHT	Red I WHITE I Red						
1	To be constructed	Starboard lateral pile						
2	Outer Port No. 2	Port Lateral Pile						
3	Barwon River STB No. 3	Starboard Lateral Pile						
4	Barwon River Port No. 4	Port Lateral Pile		THIS SECTION TO BE UPDATED				
5	Barwon River STB No. 5	Starboard Lateral Pile						
6	Barwon River Port No. 6	Port Lateral Pile						
7	William Buckley Pedestrian Bridge STB	Starboard Lateral Bridge pile						
8	William Buckley Pedestrian Bridge Port	Port Lateral Bridge Pile						
9	Barwon Heads Bridge STB No. 9	Starboard Lateral Bridge pile						
10	Barwon Heads Bridge Port No. 10	Port Lateral Bridge Pile						
UPSTREAM OF BARWON HEADS BRIDGE								
11	Barwon River STB No. 5	Starboard Lateral Buoy	38 16.788S	144 29.805E	38°16'47.3"S	144°29'48.3"E	-38.279806	144.496750
13	Barwon River STB No. 7	Starboard Lateral Pile	38 16.666S	144 29.846E	38°16'40.0"S	144°29'50.8"E	-38.277767	144.497433
15	Barwon River STB No. 9	Starboard Lateral Pile	38 16.593S	144 29.895E	38°16'35.6"S	144°29'53.7"E	-38.276550	144.498250
12	Barwon River Port No. 10	Port Lateral Buoy	38 16.554S	144 29.980E	38°16'33.2"S	144°29'58.8"E	-38.275900	144.499667
14	Barwon River Port No. 12	Port Lateral Pile	38 16.533S	144 30.025E	38°16'32.0"S	144°30'01.5"E	-38.275550	144.500417
16	Barwon River Port No. 14	Port Lateral Pile	38 16.379S	144 30.239E	38°16'22.7"S	144°30'14.3"E	-38.272983	144.503983
18	Barwon River Port No. 16	Port Lateral Pile	38 16.203S	144 30.499E	38°16'12.2"S	144°30'29.9"E	-38.270050	144.508317
20	Barwon River Port No. 18	Port Lateral Pile	38 16.017S	144 30.600E	38°16'01.0"S	144°30'36.0"E	-38.266950	144.510000
22	Barwon River Port No. 20	Port Lateral Pile	38 15.880S	144 30.555E	38°15'52.8"S	144°30'33.3"E	-38.264667	144.509250
24	Barwon River Port No. 22	Port Lateral Pile	38 15.775S	144 30.286E	38°15'46.5"S	144°30'17.2"E	-38.262917	144.504767
26	Barwon River Port No. 24	Port Lateral Pile	38 15.860S	144 30.043E	38°15'51.6"S	144°30'02.6"E	-38.264333	144.500717

Victorian Notices to Mariners can be downloaded from the
Victorian Regional Channels Authority website
www.regionalchannels.vic.gov.au