

Melbourne, 14 February 2020

**Australia – Victoria**

**No. 060 (T) – 2020**

**PORT OF MELBOURNE**

**SOUTH CHANNEL BEACON 14 OFF STATION**

**Date:** 14 February 2020

**Refers:** **NTM 054 (T) /2020 refers and is cancelled.**

**Details:** Mariners are advised that, South Channel Beacon 14 (K2322-9) in position 38° 19.66' S 144° 51.63' E, which is off station. The beacon is lying on the sea floor immediately to the north west of its charted position, clear of South Channel. The beacon presents an obstruction with a least depth of 8.5 metres.

A yellow special marker fitted with a yellow light flashing every 1.5 seconds (Fl.Y.1.52) will be installed in Saturday 15 February 2020, approximate 23 metres to the north west of the charted position of beacons 14 as below;

Buoy	Characteristic	Approximate Position
Yellow Trident 3000	Fl1.5S	38° 19.651' S 144° 51.626'E

For further information contact Melbourne VTS on 9644 9700.

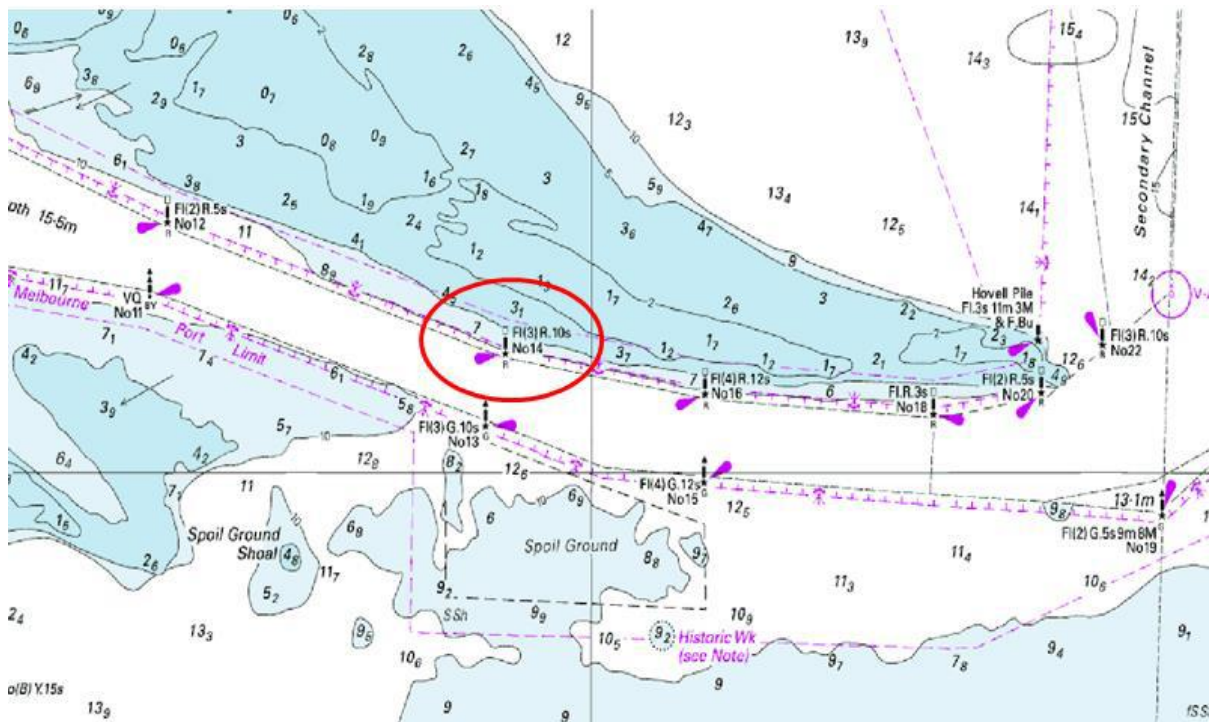
**Mariners are advised to navigate with additional caution when in the vicinity of South Channel beacon 14.**

**Publications affected:** AUS 158

**Further notice:** Further notice will be issued.



**Andrew Hays**  
**Deputy Harbour Master**



**NOT FOR NAVIGATIONAL USE**

This notice is a direction of the Harbour Master pursuant to section 232 of the *Marine Safety Act 2010* (Vic)  
 The requirements of section 232(2) have been taken into account.

Victorian Notices to Mariners can be downloaded from the Victorian Ports Corporation (Melbourne) website  
[www.vicports.vic.gov.au](http://www.vicports.vic.gov.au)